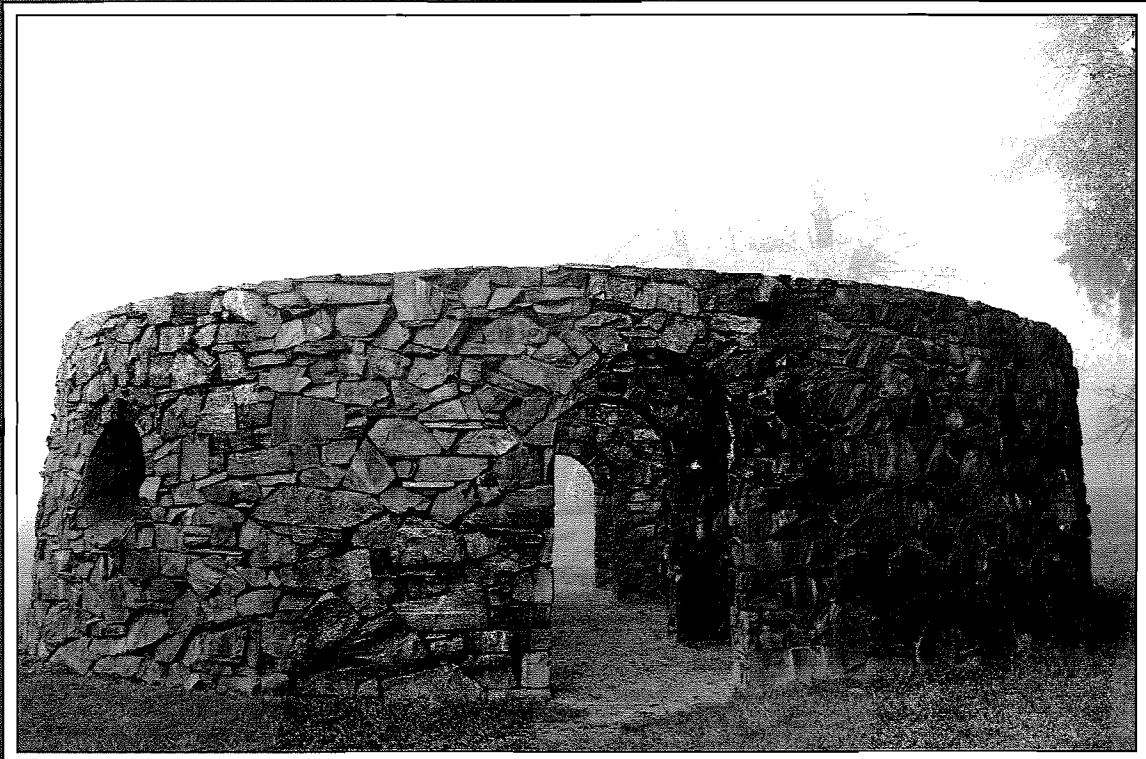




WESTERN
WASHINGTON UNIVERSITY

2006-2007 Fees and Rates



University Planning and Budgeting

Table of Contents

2006-2007 Fee and Rate Categories	i
Tuition and Mandatory Student Fees	1
Tuition and Fee Schedule	
Mandatory Fees	
Course-Related Fees	3
Course and Lab Fees	
Variable Materials Fees	
Field Trip Fees	
Other Academic Program Fees	
Continuing Education Programs and Courses	20
Degree Programs via Extended Education & Summer Programs	21
Summer Session	22
Service Fees	24
Parking and Transportation	65
Departmental Service Fees	69

2006 - 2007 Fee and Rate Categories

I. TUITION AND MANDATORY STUDENT FEES

In addition to regular academic year tuition, Western Washington University has the following mandatory student fees:

Mandatory Student Fees: Fees required to be paid by all students enrolled for six (6) or more credit hours or as may be determined by course location (on-campus or off-campus):

CAPITAL BUILDING FEE
SERVICE AND ACTIVITY FEE
HEALTH SERVICE FEE
TECHNOLOGY FEE
NON-ACADEMIC BUILDING FEE
STUDENT RECREATION CENTER FEE
RENEWABLE ENERGY FEE

FEE INCREASE LIMITED TO ACADEMIC YEAR TUITION INCREASE: CAPITAL BUILDING FEE, SERVICE AND ACTIVITY FEE, STUDENT RECREATION CENTER FEE

FEE INCREASE LIMITED TO PROJECTED PROGRAM COSTS: HEALTH SERVICE FEE, TECHNOLOGY FEE, NON-ACADEMIC BUILDING FEE, RENEWABLE ENERGY FEE

II. COURSE-RELATED FEES

Course and Lab Fees: Supplemental instruction or lab fees published and assessed to all students enrolled in a specific and identified course at the beginning of the quarter. May cover the cost of consumable materials used by the student to make items retained by the student, unique personnel expenses (e.g., artist models, technicians), cost of supplies and materials required in the course and provided directly to students for convenience and/or economy purposes, course-specific equipment repair and/or replacement, or field trips.

FEE INCREASE LIMITED TO INITIATIVE 601: ALL

Variable Materials or Field Trip Fees: By general notification in the course catalog, supplies, materials, or field trip fees that may be assessed after the beginning of the quarter for specific and identified courses. These fees vary by student and are dependent upon the materials or services selected, consumed, and/or retained by the individual student.

FEE INCREASE LIMITED TO PROJECTED PROGRAM COSTS: ALL

2006 - 2007 Fee and Rate Categories

III. OTHER ACADEMIC PROGRAM FEES

Fees for Continuing Education Programs and Courses, Degree Programs via Extended Education & Summer Programs, and Summer Session. Tuition and fees are assessed at a level to support these self-sustaining academic programs.

FEE INCREASE LIMITED TO ACADEMIC YEAR TUITION INCREASE: SUMMER SESSION

FEE INCREASE LIMITED TO PROJECTED PROGRAM COSTS: ALL OTHERS

IV. SERVICE FEES

A fee charged students, staff and/or the public to cover the cost of providing goods or services. The rate of the fee is directly related to the cost of the services or goods provided.

Some examples of these fees include:

APPLICATION FEES	LIBRARY FINES
CAREER SERVICES	PARKING AND TRANSPORTATION
CONFERENCE SERVICES	RECREATION CENTER/SPECIAL SERVICES
DEBATE TEAM FEES	SUMMER SPORTS CAMP
DEPARTMENT SERVICES/EQUIPMENT CHARGES	TICKETS FOR PERFORMANCES AND ATHLETIC EVENTS
ENROLLMENT AND ORIENTATION FEE	TRANSCRIPT FEES
HEALTH SERVICES - MEDICAL SUPPLIES	VIKING UNION
HOUSING AND DINING	WESTERN FRONT

FEE INCREASE LIMITED TO PROJECTED PROGRAM COSTS: ALL

V. DEPARTMENTAL SERVICE FEES

Departmental Service Fees: A department that offers a specific type of service primarily to other university departments and that charges a fee directly related to the cost of the goods or services provided.

Some examples include:

ADMINISTRATIVE SERVICES ASSESSMENT	PUBLISHING SERVICES
ATUS EQUIPMENT RENTALS	PHYSICAL PLANT
CAPITAL PLANNING	PLANT SERVICES/CONSTRUCTION
CENTRAL STORES	PLANNING, DESIGN & CONSTRUCTION
FISCAL SERVICES	PUBLIC SAFETY
FACILITIES MANAGEMENT	TELECOMMUNICATIONS
LOCKSHOP	VEHICLE INSURANCE
MOTORPOOL	

FEE INCREASE LIMITED TO PROJECTED PROGRAM COSTS: ALL

Western Board of Trustees approval is required for student tuition and fees.

2006-2007 Tuition Rates with Mandatory Student Fees

I. Annual Tuition and Fee Rates

Student Category	Tuition Fees			Other Mandatory Fees						Total
	Capital Building Fee	Operating Fee	Total	Service & Activity Fee	Health Service Fee	Technology Fee	Non-Academic Building Fee	*Renewable Energy Fee	Student Recreation Fee	Tuition and Fees
Resident Undergraduate	154.00	3,740.00	3,894.00	462.00	180.00	51.00	105.00	31.50	279.00	5,002.50
Resident Graduate	131.00	5,367.00	5,498.00	462.00	180.00	51.00	105.00	31.50	279.00	6,606.50
Non-Resident Undergraduate	575.00	13,866.00	14,441.00	462.00	180.00	51.00	105.00	31.50	279.00	15,549.50
Non-Resident Graduate	472.00	15,264.00	15,736.00	462.00	180.00	51.00	105.00	31.50	279.00	16,844.50

II. Quarterly Tuition and Fee Rates... *(tuition and service and activity fees are rounded to nearest whole dollar amount...RCW 28B.15.100)*

Student Category	Tuition Fees			Other Mandatory Fees						Total
	Capital Building Fee	Operating Fee	Total	Service & Activity Fee	Health Service Fee	Technology Fee	Non-Academic Building Fee	*Renewable Energy Fee	Student Recreation Fee	Tuition and Fees
Resident Undergraduate	51.00	1,247.00	1,298.00	154.00	60.00	17.00	35.00	10.50	93.00	1,667.50
Resident Graduate	44.00	1,789.00	1,833.00	154.00	60.00	17.00	35.00	10.50	93.00	2,202.50
Non-Resident Undergraduate	192.00	4,622.00	4,814.00	154.00	60.00	17.00	35.00	10.50	93.00	5,183.50
Non-Resident Graduate	157.00	5,088.00	5,245.00	154.00	60.00	17.00	35.00	10.50	93.00	5,614.50

* The Renewable Energy Fee will be levied on a per credit hour basis from 1 credit hour to a maximum of 10 credit hours per quarter.

III. Per Credit Fees -Quarterly Basis

Student Category	Less Than 10 Credits	More Than 18 Credits
Resident Undergraduate	145.00	130.00
Resident Graduate	199.00	183.00
Non-Resident Undergraduate	497.00	481.00
Non-Resident Graduate	540.00	525.00

Less Than 10 Credits: Tuition Fees + Service and Activity Fee divided by 10 Credit Hours. (RCW 28B.15.100)

More Than 18 Credits: Tuition Fees divided by 10 Credit Hours. (RCW 28B.15.100)

Fund	Department	Description	2006 - 07 Fee	Last Date Changed
23073	Health Services	Health Service Fee-Students enrolled in 6+ credits	60.00 per quarter	7/1/2006
44011	Housing & Dining System	Non-Academic Building Fee, 6+ credits/Qtr	35.00 per quarter	7/1/2000
23257	Renewable Energy Fee	Renewable Energy Fee	1.05 per credit/ \$10.50 max. per qtr	7/1/2005
45401	Student Recreation Center	Student Recreation Fee-students enrolled in 6+ credits	93.00 per quarter	7/1/2006
23161	Student Technology	Student Tech Fee-students enrolled in 6+ credits	17.00 per quarter	7/1/2002

Fund	Department		Description	2006 - 07 Fee	Last Date Changed
20071	Anthropology	312	Summer Field Trip Fee	Variable	7/1/1996
20002	Art	109	Materials/speakers	3.69	7/1/2006
20002		110	Materials/speakers/model costs	13.58	7/1/2006
20002		120	Materials/speakers	13.58	7/1/2006
20002		130	Materials/speakers	13.58	7/1/2006
20002		202	Materials	12.35	7/1/2006
20002		203	Contemporary Studio Drawing	43.80	7/1/2006
20002		210	Lab Fee	39.49	7/1/2006
20002		220	Materials/speakers/model costs	13.58	7/1/2006
20002		230	Lab Fee - In Class Speakers	55.54	7/1/2006
20002		240	Lab Fee	39.49	7/1/2006
20002		251	Comp Vis Problem Solving	40.39	7/1/2006
20002		252	Drawing & Visual for Design	29.76	7/1/2006
20002		260	Materials	Variable	7/1/1989
20002		270	Materials	13.58	7/1/2006
20002		300	Independent Study	Variable	7/1/2002
20002		303	Course and Lab Fee	Variable	7/1/2006
20002		304	Figure Drawing and Issues of the Body	54.76	7/1/2006
20002		305	Experimental Drawing Workshop w/lab	45.20	7/1/2006
20002		310	Print Relief	32.85	7/1/2006
20002		311	Lab Fee	39.49	7/1/2006
20002		312	Lab Fee	39.49	7/1/2006
20002		313	Lab Fee	53.07	7/1/2006
20002		321	Materials/speakers/model costs	13.58	7/1/2006
20002		322	Painting Workshop II	42.51	7/1/2006
20002		331	Lab Fee - In Class Speakers	99.98	7/1/2006
20002		332	Lab Fee - In Class Speakers	99.98	7/1/2006
20002		333	Lab Fee - In Class Speakers	99.98	7/1/2006
20002		334	Lab Fee - In Class Speakers	99.98	7/1/2006
20002		341	Lab Fee	66.65	7/1/2006
20002		342	Lab Fee	66.65	7/1/2006
20002		351	Materials	13.58	7/1/2006

Fund	Department		Description	2006 - 07 Fee	Last Date Changed
20002	Art	352	Illustration	29.18	7/1/2006
20002		354	Digital Imaging	40.85	7/1/2006
20002		361	Materials	Variable	7/1/1989
20002		362	Paper Making (Mixed Media)	27.14	7/1/2006
20002		363	Materials	Variable	7/1/1998
20002		367	Materials	Variable	7/1/2000
20002		371	Materials	13.58	7/1/2006
20002		372A	Design Product Production	10.62	7/1/2006
20002		372B	Design Product Application	51.51	7/1/2006
20002		379	Materials	Variable	7/1/1989
20002		380	Materials	7.39	7/1/2006
20002		381	Materials	7.39	7/1/2006
20002		382	Professional Practice in Art Education	21.90	7/1/2006
20002		383	Materials	13.58	7/1/2006
20002		397	Materials	27.15	7/1/2006
20002		397E	Course and Lab Fee	25.00	7/1/2006
20002		397G	Course and Lab Fee	Variable	7/1/2006
20002		400	Independent Study	Variable	7/1/2002
20002		401	Advanced Drawing Workshop w/lab	45.20	7/1/2006
20002		411	Lab Fee	53.07	7/1/2006
20002		421	Materials/speakers/model costs	13.58	7/1/2006
20002		431	Lab Fee - In Class Speakers	55.54	7/1/2006
20002		441	Lab Fee	66.65	7/1/2006
20002		451	Digital Video	40.85	7/1/2006
20002		456	Design for the Internet	40.85	7/1/2006
20002		457	Special Topics in Computer Graphics	40.85	7/1/2006
20002		459	Senior Projects in New Media	40.85	7/1/2006
20002		460	Materials	Variable	7/1/1998
20002		470	Materials	13.58	7/1/2006
20002		471	Materials	13.58	7/1/2006
20002		474	Materials	13.58	7/1/2006
20002		476	Materials	13.58	7/1/2006

Fund	Department		Description	2006 - 07 Fee	Last Date Changed
20002	Art	479	Speakers/Materials	38.26	7/1/2006
20002		494	Materials/speakers/model costs	Variable	7/1/2004
20002		495	Professional Practices for Studio Artists	Variable	7/1/2004
20002		497	Materials	27.15	7/1/2006
20002		AH 211	Art History, Found. of Visual Com	10.62	7/1/2006
20002		AH 220 A/B	Slide Replace/Materials	3.69	7/1/2006
20002		AH 230 A/B	Slide Replace/Materials	3.69	7/1/2006
20002		AH 240 A/B	Slide Replace/Materials	3.69	7/1/2006
20002		AH 270A	Course and Lab Fee	3.69	7/1/2006
20002		AH 270B	Course and Lab Fee	3.69	7/1/2006
20002		AH 301	Speakers/Materials/Field Trips	10.94	7/1/2006
20002		AH 308	Visual Arts in the Community	28.25	7/1/2006
20002		AH 310	Course and Lab Fee	Variable	7/1/2006
20002		AH 311	Foundation of Graphic Design History	11.67	7/1/2006
20002		AH 312	Slide Replace/Materials	12.35	7/1/2006
20002		AH 313	Speakers/Materials/Field Trips	10.94	7/1/2006
20002		AH 315	Speakers/Materials/Field Trips	10.94	7/1/2006
20002		AH 316	Speakers/Materials/Field Trips	10.94	7/1/2006
20002		AH 320	Speakers/Materials/Field Trips	10.94	7/1/2006
20002		AH 330	Speakers/Materials/Field Trips	10.94	7/1/2006
20002		AH 340	Speakers/Materials/Field Trips	10.94	7/1/2006
20002		AH 358	Speakers/Materials/Field Trips	10.94	7/1/2006
20002		AH 360	Speakers/Materials/Field Trips	10.94	7/1/2006
20002		AH 368	Speakers/Materials/Field Trips	10.94	7/1/2006
20002		AH 370	Speakers/Materials/Field Trips	10.94	7/1/2006
20002		AH 375	Speakers/Materials/Field Trips	10.94	7/1/2006
20002		AH 401	Speakers/Materials/Field Trips	10.94	7/1/2006
20002		AH 410	Speakers/Materials/Field Trips	10.94	7/1/2006
20002		AH 411	Course and Lab Fee	Variable	7/1/2006
20002		AH 415	Speakers/Materials/Field Trips	10.94	7/1/2006
20002		AH 416	Speakers/Materials/Field Trips	10.94	7/1/2006
20002		AH 420	Course and Lab Fee	Variable	7/1/2006

Fund	Department		Description	2006 - 07 Fee	Last Date Changed
20002	Art	AH 429	Speakers/Materials/Field Trips	10.94	7/1/2006
20002		AH 431	Materials	25.91	7/1/2006
20002		AH 438	Speakers/Materials/Field Trips	10.94	7/1/2006
20002		AH 440	Speakers/Materials/Field Trips	10.94	7/1/2006
20002		AH 450	Speakers/Materials/Field Trips	10.94	7/1/2006
20002		AH 475	Speakers/Materials/Field Trips	10.94	7/1/2006
20002		AH 490	Speakers/Materials/Field Trips	10.94	7/1/2006
20026	Art: Photography	290	General Photography	Variable	7/1/2000
20026		390	Adv Photo	Variable	7/1/2000
20026		391	Color Photo	Variable	7/1/2000
20026		397D	Course and Lab Fee	70.00	7/1/2006
20026		490	Adv Photo Workshop	Variable	7/1/2000
20019	Art: VicoEd	372	Imaging Reproductions I	53.07	7/1/2006
20019		374	Publication Design	13.58	7/1/2006
20019		377	Materials Fee	37.02	7/1/2006
20019		397	Experimental Summer Courses	Variable	7/1/2005
20019		397A	Course and Lab Fee	15.00	7/1/2006
20019		397B	Course and Lab Fee	15.00	7/1/2006
20019		397C	Course and Lab Fee	30.00	7/1/2006
20019		415	Adv Book Arts	Variable	7/1/1996
20019		473	Materials Fee	61.73	7/1/2006
20019		477	Portfolio and Senior Project	27.15	7/1/2006
20086	Biology	101 & 102	Course Fee	6.15	7/1/2006
20131		101, 102, 204, 205, 206, 297, 322, 326, 346, 348, 349, 395, 403, 404, 406, 407, 434, 450, 452, 456, 460, 462, 463, 465, 469, 479, 494, 503, 508, 545, 554, 594, 579	Biology Equipment Repair / Replacement (33 Courses)	8.27	7/1/2006
20086		204, 205, 206, 297, 503, 508, 545, 594, 579	Course Fee	18.50	7/1/2006
20086		297	Microbiology for PEHR Majors	18.50	7/1/2006
20086		322, 326, 346, 348, 349, 395	Course Fee	18.50	7/1/2006
20086		324	Instrumentation-intensive course	Variable	7/1/2001
20086		395	Student Research	18.48	7/1/2006
20086		403,404,406,407,419,434	Course Fee	18.50	7/1/2006

Fund	Department		Description	2006 - 07 Fee	Last Date Changed
20086	Biology	434, 450, 452, 456, 460, 462, 463, 465, 469, 479	Course Fee	18.50	7/1/2006
20086		436	Instrumentation-intensive course	Variable	7/1/2001
20086		445A-Z	Student Research	Variable	7/1/2001
20086		453	Instrumentation-intensive course	Variable	7/1/2001
20086		468	Instrumentation-intensive course	Variable	7/1/2001
20086		484	Instrumentation-intensive course	Variable	7/1/2001
20086		494	Student Research	18.48	7/1/2006
20086		554	Student Research	18.48	7/1/2006
20086		Bio/Chem 475	Molecular Biology Lab	Variable	7/1/2002
21002	Chemistry	101	Lab Fee	Variable	7/1/2001
21002		115	Lab Fee	Variable	7/1/2001
21002		121	Lab Fee	Variable	7/1/2001
21002		122	Lab Fee	Variable	7/1/2001
21002		123	Lab Fee	Variable	7/1/2001
21002		125	Lab Fee	Variable	7/1/2001
21002		126	Lab Fee	Variable	7/1/2001
21002		225	Lab Fee	Variable	7/1/2001
21002		251	Lab Fee	Variable	7/1/2001
21002		308	Lab Fee	Variable	7/1/2001
21002		333	Lab Fee	Variable	7/1/2001
21002		354	Lab Fee	Variable	7/1/2001
21002		355	Lab Fee	Variable	7/1/2001
21002		434	Lab Fee	Variable	7/1/2001
21002		454	Lab Fee	Variable	7/1/2001
21002		455	Lab Fee	Variable	7/1/2001
21002		464	Lab Fee	Variable	7/1/2001
21002		465	Lab Fee	Variable	7/1/2001
21002		474	Lab Fee	Variable	7/1/2001
20109	Computer Science	142	Computer Science Lab Fee	4.79 per credit hour	7/1/2006
20109		All Computer Courses, except 494,498	Lab Fee	4.79 per credit hour	7/1/2006
23176	Dance	125, 128, 135, 138, 139, 231, 232, 235, 238, 335, 338, 435	Dance Course Fee	Variable	7/1/1997

Fund	Department		Description	2006 - 07 Fee	Last Date Changed
23176	Dance	239	Mod-Hop II	42.51	7/1/2006
20132	Engineering Technology	110, 111, 313, 322, 323A, 323C, 422, 424, 425, 426A- D, 427, 428, 429	Course and Lab Fee	25.84	7/1/2006
20132		222, 223, 225, 326, 335, 344, 380, 420, 430, 431, 484, 486	Course and Lab Fee	15.50	7/1/2006
20028	Engineering Technology: Education	212	Intro to Technology for Educators	Variable	7/1/2000
20028		213	Design Development for Technology Education	Variable	7/1/2000
20028		493	Technology Education: Methods	Variable	7/1/2000
20028		592E-N	Curriculum Development in Technology Education	Variable	7/1/2001
20072	Engineering Technology: Electronics	271	Circuit Analysis I	Variable	7/1/2000
20072		272	Electronic Devices and Circuits	Variable	7/1/2000
20072		273	Digital Electronics	Variable	7/1/2000
20072		351	Electrical Technology I	Variable	7/1/2000
20072		352	Electrical Technology II	Variable	7/1/2000
20072		354	Basic Microprocessor Control	Variable	7/1/2000
20072		371	Circuit Analysis II	Variable	7/1/2000
20072		372	Electronic Analysis and Design	Variable	7/1/2000
20072		373	Digital Systems	Variable	7/1/2000
20072		374	Microprocessor Applications	Variable	7/1/2000
20072		375	Electronic Systems	Variable	7/1/2000
20072		376	Electrical Power	Variable	7/1/2000
20072		377	Instrumentation	Variable	7/1/2000
20072		379	Active Linear and Non-Linear Circuits	Variable	7/1/2000
20072		405	Communications Circuits	Variable	7/1/2000
20072		454	Embedded Systems	Variable	7/1/2000
20072		455	Communication Systems	Variable	7/1/2000
20072		457	Automatic Control Systems	Variable	7/1/2000
20072		471	Project Definition	Variable	7/1/1992
20072		474	Microcomputer-based Design	Variable	7/1/1992
20024	Engineering Technology: Foundry	223	Mach Metal Processes	Variable	7/1/2000
20024		322	Numerical Control Operations	Variable	7/1/2000
20024		426A	Adv CNC (Surfacing & Contours)	Variable	7/1/1999
20024		426B	Adv CNC (Mill/Turn)	Variable	7/1/2000

Fund	Department	Description	2006 - 07 Fee	Last Date Changed
20024	Engineering Technology: Foundry	426C Adv CNC (Hi-Speed)	Variable	7/1/2000
20024		426D Adv CNC (EDM)	Variable	7/1/2000
20024		427 Tool Design	Variable	7/1/1999
20023	Engineering Technology: Industrial	110 Engineering Design Graphics I	Variable	7/1/2000
20023		111 Engineering Design Graphics II	Variable	7/1/2000
20023		305 CAD Animation	Variable	7/1/2000
20023		313 Arch Concept	Variable	7/1/2000
20023		323A Advanced CAD (Pro/Engineer)	Variable	7/1/2000
20023		323B Advanced CAD (Advanced Profile/Generation)	Variable	7/1/2000
20023		323C Advanced CAD (CATIA)	Variable	7/1/2000
20027	Engineering Technology: Industrial Design	214 Soph Ind Design I	Variable	7/1/2000
20027		215 Hist of Ind Design	Variable	7/1/2000
20027		216 Soph Ind Design I	Variable	7/1/2000
20027		311 Persp/Render	Variable	7/1/2000
20027		312 Industrial Design CAD Skills	Variable	7/1/2003
20027		314A Jnr. Ind Design 1	Variable	7/1/2000
20027		314B Jnr. Ind Design 2	Variable	7/1/2000
20027		314C Jnr. Ind Design 3	Variable	7/1/2000
20027		315 Perspective & Rendering II	Variable	7/1/2000
20027		414A Snr. Ind Design 1	Variable	7/1/2000
20027		414B Snr. Ind Design 2	Variable	7/1/2000
20027		414C Snr. Ind Design 3	Variable	7/1/2000
20020	Engineering Technology: Metals	221 Welding	Variable	7/1/2000
20020		222 Foundry, Forming, & Joining	Variable	7/1/2000
20020		225 Strength of Materials	Variable	7/1/2001
20020		326 Fluid Power	Variable	7/1/2000
20020		329 Virtual Simulation	Variable	7/1/2002
20020		344 Industrial Quality Assurance	Variable	7/1/2004
20020		420 Manufacturing Automation and Robotics	Variable	7/1/1997
20020		424 Manufacturing Implementation	Variable	7/1/2000
20020		425 Machine Design	Variable	7/1/2000
20020		428 Advanced Manufacturing Lab	Variable	7/1/2000

Fund	Department		Description	2006 - 07 Fee	Last Date Changed
20020	Engineering Technology: Metals	429	Independent Study	Variable	7/1/1994
20020		497A	Lab Fee	Variable	7/1/1999
20025	Engineering Technology: Plastics	301	Materials Science for Design	Variable	7/1/1997
20025		333	Polymer Technology	Variable	7/1/1997
20025		334	Reinforced Plastics/Composites	Variable	7/1/1997
20025		335	Tooling for Plastics Processing	Variable	7/1/1989
20025		336	Tooling & Injection Molding	Variable	7/1/2002
20025		337	Secondary Operations	Variable	7/1/1997
20025		338	Injection Molding	Variable	7/1/1997
20025		431	Plastics Product Design	Variable	7/1/1997
20025		432	Plastics Senior Project Implementation	Variable	7/1/2002
20025		433	Engineering Polymers	Variable	7/1/1989
20025		434	Advanced Composites	Variable	7/1/1997
20025		436	Polymer Compounding	Variable	7/1/1989
20025		438	Research Plastics	Variable	7/1/1989
20021	Engineering Technology: Powers	280	Power Mechanics	Variable	7/1/2000
20021		281	Power Transmission	Variable	7/1/2000
20021		300	Independent Study	Variable	7/1/1997
20021		380	Adv Power Mech	Variable	7/1/2000
20021		381	Adv Power Tran	Variable	7/1/2000
20021		382	Auto Elec	Variable	7/1/2000
20021		400	Independent Study	Variable	7/1/1989
20021		481	Gaseous Fuels	Variable	7/1/2000
20021		484	Vehicle Design	Variable	7/1/2000
20021		486	Adv. Vehicle Design	Variable	7/1/2000
20021		489	Research Pwr Mech	Variable	7/1/2000
20022	Engineering Technology: Woods	231	Design Problems in Woodworking	Variable	7/1/2000
20022		439	Independent Study	Variable	7/1/1994
20134	English	302 & 402	Technical Communications Lab & Materials Fee	6.15	7/1/2006
20110		Eng 101	Writing & Critical Inquiry	6.15	7/1/2006
20059	Fairhaven College	101A	Introduction to Interdisciplinary Study at Fairhaven	12.35	7/1/2006
20136		201A	Critical & Reflective Inquiry	12.35	7/1/2006

Fund	Department		Description	2006 - 07 Fee	Last Date Changed
20059	Fairhaven College	202A	Humanities & The Expressive Arts I	12.35	7/1/2006
20059		203A	Social Responsibility and Relation	12.35	7/1/2006
20137		206A	Science and Our Place on the Planet I	12.35	7/1/2006
20059		210A	Ski to Sea Experience	25.84	7/1/2006
20129		211B	American Legal System	10.62	7/1/2006
20136		212C	Political Economy	12.35	7/1/2006
20136		213D	Slave Narratives	11.29	7/1/2006
20059		214E	Historian as Detective	7.39	7/1/2006
20136		216B	Testimonies of the New South	11.29	7/1/2006
20059		221J	College Writing	12.35	7/1/2006
20059		222G	Imaginative Writing	6.15	7/1/2006
20059		223K	Collecting Personal Narratives	10.62	7/1/2006
20129		224M	Writing Arguments	10.33	7/1/2006
20059		225G	Presentational Speaking	10.62	7/1/2006
20059		226H	Words	11.29	7/1/2006
20059		227J	Walking	13.20	7/1/2006
20085		231 A,B,C	Intro to Applied Human Ecology Sustain. Syst.	12.35	7/1/2006
20059		242R	The Art of Play	7.39	7/1/2006
20059		243T	Awareness Through the Body	6.15	7/1/2006
20130		250E	Visual Art Foundations	26.57	7/1/2006
20130		252V	Intro to Drawing	18.50	7/1/2006
20130		254X	Relief Print Making	18.50	7/1/2006
20059		255Y	Folk Music Performance	6.42	7/1/2006
20136		261E	Race into the Movies I	11.29	7/1/2006
20128		275B	Intro to Digital Video Prod	42.51	7/1/2006
20006		275H	Recording Arts I	64.19	7/1/2006
20059		303A	Interdisciplinary Concentration Seminar	6.15	7/1/2006
20129		307A	Conflict Resolution	12.26	7/1/2006
20129		308A	Legal Research and Analysis	12.26	7/1/2006
20059		311C	Alternatives in Education	12.35	7/1/2006
20129		311E	Criminal Procedure	5.00	7/1/2006
20136		312E	Transgender Identities and Histories	15.00	7/1/2006

Fund	Department	Description	2006 - 07 Fee	Last Date Changed
20129	Fairhaven College	313C US Legal Histories, Herstories, Ourstories	15.00	7/1/2006
20136		313E Gay, Lesbian, Bisexual & Transgender Educ	13.20	7/1/2006
20129		316A Criminal Law	10.33	7/1/2006
20136		316E Identity, Myth, Struggle, Latin American Herstories	5.00	7/1/2006
20059		318C Democracy	12.35	7/1/2006
20059		320H Poem & Song	10.33	7/1/2006
20059		322M Memoirs & Memory - Childhood in America	11.29	7/1/2006
20059		323G Imaginative Writing II	6.15	7/1/2006
20059		325J Myth & Mythology	7.39	7/1/2006
20059		326K Studies in Film	3.69	7/1/2006
20059		328M American Lives	6.42	7/1/2006
20059		331N Natural History	5.00	7/1/2006
20137		332N Current Environmental Topics	7.39	7/1/2006
20136		333N Investigating the Mind and Consciousness	10.00	7/1/2006
20137		333P Feminist Science	6.15	7/1/2006
20137		334Q The Science & Music of Natural Sounds	37.02	7/1/2006
20085		335N Visionary Sustainable Futures	9.87	7/1/2006
20137		338P Cultural and Biological Perspectives on Pregnancy & Childbirth	6.42	7/1/2006
20137		339N Env. Issues of Indigenous Peoples	12.35	7/1/2006
20136		341N Mindfulness and Well Being	10.00	7/1/2006
20059		341T Awareness thru Body II	9.87	7/1/2006
20136		342U The Body Speaks: Culture and Eating Disorders	12.26	7/1/2006
20136		343R Death and Dying	12.35	7/1/2006
20136		347U Psychology of Women	12.35	7/1/2006
20130		350G Professional Art Portfolio	26.57	7/1/2006
20130		351W Printmaking Narratives	25.20	7/1/2006
20130		352Y Visual Art Workshop	15.00	7/1/2006
20059		353Y Songwriting	5.65	7/1/2006
20059		354B Scriptwriting Workshop	5.65	7/1/2006
20130		355Y Installation Art	26.57	7/1/2006
20059		356X Dreams, Imagination, Creativity	6.15	7/1/2006
20059		357Y Theatre/Film Production	10.62	7/1/2006

Fund	Department		Description	2006 - 07 Fee	Last Date Changed
20130	Fairhaven College	358V	Art in the Environment	13.58	7/1/2006
20130		359W	Performance Art	6.15	7/1/2006
20136		361E	Race into the Movies II	2.47	7/1/2006
20136		362F	Asian Women In America	3.69	7/1/2006
20136		363B	Suzie Wong . . . Asians in Hollywood	11.29	7/1/2006
20136		364C	El Movimiento Chicano	12.35	7/1/2006
20136		365D	Contemporary Mexican Society	13.20	7/1/2006
20136		368B	Political Economy of Development	11.29	7/1/2006
20006		375F	Digital Mixing	38.26	7/1/2006
20006		375H	Recording Arts II	64.19	7/1/2006
20006		375P	Audio Hard Drive Editing	38.26	7/1/2006
20006		375Q	Pro Tools HD Recording	38.27	7/1/2006
20135		377D	Whatcom Civil Rights Project	26.57	7/1/2006
20059		381J	Topics in Literature	13.20	7/1/2006
20059		382H	Creative Non-Fiction	6.15	7/1/2006
20059		384J	Writing Nature	12.35	7/1/2006
20059		387K	Grant writing	5.65	7/1/2006
20059		388M	Oral History	6.15	7/1/2006
20136		393B	Rights Liberties Justice in America	7.44	7/1/2006
20136		399B	Contemporary Native American Issue	2.12	7/1/2006
20059		403A	Advanced Seminar	12.35	7/1/2006
20129		407A	Advanced Legal Writing	12.26	7/1/2006
20129		408A	Legal Research and Analysis	12.26	7/1/2006
20129		409A	LDP Advanced Seminar	12.26	7/1/2006
20129		412E	Advanced Topics in Law	Variable	7/1/2006
20136		413E	Curers, Clients & Culture	12.35	7/1/2006
20136		418E	Feminist Thought	7.39	7/1/2006
20136		419F	Shamanism	6.15	7/1/2006
20059		421H	Advanced Topics in Lit	13.20	7/1/2006
20059		422J	Art of the Essay	12.26	7/1/2006
20059		423K	Space, Place, Imagination	5.00	7/1/2006
20059		425K	Adv Writing Workshop	12.35	7/1/2006

Fund	Department		Description	2006 - 07 Fee	Last Date Changed
20137	Fairhaven College	434P	Advanced Studies in Field Science	12.26	7/1/2006
20136		441U	Relational Self, Theories & Research	10.62	7/1/2006
20136		444U	Depressions: Causes, Cultures	12.42	7/1/2006
20136		447R	Human Aggression	12.35	7/1/2006
20136		448T	Risk and Resilience: Adolescent Girls: Development Culture Identity	10.00	7/1/2006
20130		451X	Resistance Art of the Indigena	16.95	7/1/2006
20130		452W	Thematic Life Drawing	18.50	7/1/2006
20059		454Y	Scriptwriting Workshop	5.65	7/1/2006
20130		455V	Advanced Printmaking	24.67	7/1/2006
20059		457W	Adv Theatre/Film Production	10.62	7/1/2006
20136		462B	Political Economy and the Status of Women	11.29	7/1/2006
20111	Geology	100 Level Classes	Lab Fee	Variable	7/1/2002
20111		200 Level Classes	Lab Fee	Variable	7/1/2002
20111		300 & 400 & 500 Level Classes	Lab Fee	Variable	7/1/2002
20010		410a,410b,318,407a, and Other	Field Trip Cost	Variable	7/1/1995
20009		Geology 101	Lab Manual Publications	Variable	7/1/2002
23166		Various	Geology Field Trip Transportation	Variable	7/1/1996
20125	Huxley College	EGEO 250	GIS Survey	5.31	7/1/2006
20125		EGEO 305	Analysis of Spatial Data (statistics)	5.31	7/1/2006
20125		EGEO 350	Introduction to GIS	15.94	7/1/2006
20125		EGEO 352	Computer Cartography	15.94	7/1/2006
20125		EGEO 450	Intermediate GIS	15.94	7/1/2006
20125		EGEO 451	GIS Databases	15.94	7/1/2006
20125		EGEO 452	Advanced GIS	15.94	7/1/2006
20125		EGEO 453	GIS: Vector Analysis	15.94	7/1/2006
20125		EGEO 510	Spatial Quant Analysis (statistics)	5.31	7/1/2006
20125		EGEO 552	Advanced GIS	15.94	7/1/2006
20123		ESCI 322, 361B, 407, 408, 421B, 429, 430B, 440, 529	Field Trip Transportation Fees	Variable	7/1/2005
20123		ESCI 330	Natural History of the Pacific Northwest	Variable	7/1/2002
20123		ESCI 411, 463, 507, 540	Field Trip Transportation Fees	Variable	7/1/2006
20125		ESCI 441	GIS & Env Modeling	5.31	7/1/2006
20125		ESCI 442	Remote Sensing	15.94	7/1/2006

Fund	Department		Description	2006 - 07 Fee	Last Date Changed
20125	Huxley College	ESCI 502	Environmental Design	5.31	7/1/2006
20125		ESCI 542	Remote Sensing	15.94	7/1/2006
20125		ESCI-436	Environmental Impact Assessment	5.31	7/1/2006
20125		ESCI-536	Environmental Impact Assessment Practicum	5.31	7/1/2006
20125		ESTU 401	Applications GIS	15.94	7/1/2006
20133		ESTU 410	Field Trip Transportation Fee	Variable	7/1/2005
20125		ESTU 415	Planning-Sustainable	5.31	7/1/2006
20125		ESTU 418	Social Impact Assessment	5.31	7/1/2006
20125		ESTU 436	Environmental Impact Assessment	5.31	7/1/2006
20125		ESTU 470	Planning-Studio	5.31	7/1/2006
20125		ESTU 471	Planning-Campus	5.31	7/1/2006
20005		ESTU 474,476,483	Field Trips	Variable	7/1/2001
20125		ESTU 536	Environmental Impact Assessment Practicum	5.31	7/1/2006
23256	Instructional Technology	344, 417, 444A-D, 461, 462, 466, 467, 468, 503, 518, 544, 561, 562, 563, 565, 566, 567, 571, 572, 573, 574, 575	Instructional Technology, 25 courses	5.16	7/1/2006
23256		546	Instructional Technology Software Fee	5.16	7/1/2006
20117	Journalism	207	Course Fee	11.10	7/1/2006
20117		214	Course Fee	7.39	7/1/2006
20117		221	Course Fee	7.39	7/1/2006
20117		305	Course Fee	11.10	7/1/2006
20117		307	Course Fee	18.50	7/1/2006
20117		309	Course Fee	18.50	7/1/2006
20117		314	Course Fee	7.39	7/1/2006
20117		321	Course Fee	7.39	7/1/2006
20117		370	Course Fee	11.10	7/1/2006
20117		414	Course Fee	7.39	7/1/2006
20117		421	Course Fee	7.39	7/1/2006
20117		450	Advanced Reporting	18.50	7/1/2006
20117		497	Editing in Digital Media-Advanced Editing	18.50	7/1/2006
23186	Language Lab Fees	101-103	Language Lab Fees - Chinese	5.31	7/1/2006
23186		101-103	Language Lab Fees - French	5.31	7/1/2006

Fund	Department		Description	2006 - 07 Fee	Last Date Changed
23186	Language Lab Fees	101-103	Language Lab Fees - German	5.31	7/1/2006
23186		101-103	Language Lab Fees - Japanese	5.31	7/1/2006
23186		101-103	Language Lab Fees - Spanish	5.31	7/1/2006
23186		201-203	Language Lab Fees - Chinese	5.31	7/1/2006
23186		201-203	Language Lab Fees - French	5.31	7/1/2006
23186		201-203	Language Lab Fees - German	5.31	7/1/2006
23186		201-203	Language Lab Fees - Japanese	5.31	7/1/2006
23186		201-203	Language Lab Fees - Spanish	5.31	7/1/2006
23009	Music	499	Music Recital Fee	38.26	7/1/2006
20014	PEHR: Physical Education (PE)	101	Conditioning	13.58	7/1/2006
20014		102	Aerobic Fitness	13.58	7/1/2006
20014		103	Jogging	13.58	7/1/2006
20014		104	Beginning Hatha Yoga	13.58	7/1/2006
20014		104	Beginning Hatha Yoga	Variable	7/1/2006
20016		105	Challenge Course Facilitation I	Variable	7/1/2006
20014		108	Weight Training	13.58	7/1/2006
20014		109	Group Fitness Instructor Training	Variable	7/1/2005
20014		109	Group Fitness Instructor Training	13.58	7/1/2006
20014		110	Physical Activity Instructor Training	13.58	7/1/2006
20014		112	Beginning Swimming	13.58	7/1/2006
20014		113	Intermediate Swimming	13.58	7/1/2006
20014		114	Advanced Swimming	13.58	7/1/2006
20014		116	Lifeguard Training	13.58	7/1/2006
20014		116	Lifeguard Training	Variable	7/1/2005
20014		120	Social Dance	13.58	7/1/2006
20014		122	Folk/Country Dance	13.58	7/1/2006
20014		123	Scottish Country Dance	13.58	7/1/2006
20014		124	Intermediate Scottish Country Dance	13.58	7/1/2006
20014		132	Beginning Badminton	13.58	7/1/2006
20014		133	Intermediate Badminton	13.58	7/1/2006
20014		134	Beginning Pickle ball	13.58	7/1/2006
20014		136	Beginning Tennis	13.58	7/1/2006

Fund	Department	Description	2006 - 07 Fee	Last Date Changed
20014	PEHR: Physical Education (PE)	137 Intermediate Tennis	13.58	7/1/2006
20014		139 Racquetball	13.58	7/1/2006
20014		142 Basketball	13.58	7/1/2006
20014		144 Soccer	13.58	7/1/2006
20014		145 Volleyball	13.58	7/1/2006
20014		148 Lacrosse	13.58	7/1/2006
20014		149 Beginning Ultimate Frisbee	13.58	7/1/2006
20014		154 Golf	13.58	7/1/2006
20014		154 Golf	Variable	7/1/2004
20015		157 Begin Skiing	191.33	7/1/2006
20015		158 Intermediate Skiing	191.33	7/1/2006
20015		159 Advanced Skiing	191.33	7/1/2006
20014		165 Beginning Handball	13.58	7/1/2006
20014		166 Intermediate Handball	13.58	7/1/2006
20014		167 Beginning Mountain Bicycling	13.58	7/1/2006
20014		168 Martial Arts	Variable	7/1/2006
20014		168 Martial Arts	13.58	7/1/2006
20014		169 Beginning Self Defense	13.58	7/1/2006
20014		169 Beginning Self Defense	Variable	7/1/2006
20016		170 Sailing/Canoeing	44.43	7/1/2006
20016		171 Sailboat Racing I	44.43	7/1/2006
20016		172 Sailboat Racing II	44.43	7/1/2006
20016		173 Sailing Instructor Training	44.43	7/1/2006
20016		174 Sailing Racing Instructor	44.43	7/1/2006
20016		175 Windsurfing	44.43	7/1/2006
20016		176 Windsurfing Instructor Training	44.43	7/1/2006
20016		177 Kayaking	44.43	7/1/2006
20016		178 Beginning Saltwater Keel Boat Sailing	127.15	7/1/2006
20016		179 Intermediate Sailing	44.43	7/1/2006
23151	PEHR: Professional Courses (PEHR)	304 Materials/Ath Injuries Training	Variable	7/1/1991
20124		311 Biomechanics Lab	10.94	7/1/2006
20124		312 Kinesiology Lab	10.94	7/1/2006

Fund	Department		Description	2006 - 07 Fee	Last Date Changed
20124	PEHR: Professional Courses (PEHR)	340	Block I: Pedagogy Lab	10.00	7/1/2006
20124		341	Block II: Pedagogy Lab	10.00	7/1/2006
20124		345	Elementary Pedagogy Lab	10.00	7/1/2006
20124		413	Exercise Physiology Lab	10.94	7/1/2006
20124		415	Physical Fitness Assessment Lab	10.94	7/1/2006
23151		435	Worksite Health Promotion	15.94	7/1/2006
20124		440	Block III: Pedagogy Lab	10.00	7/1/2006
20124		441	Block IV: Pedagogy Lab	10.00	7/1/2006
23192	PEHR: Recreation (REC)	271	Phase I	Variable	7/1/1998
23192		272	Phase I	Variable	7/1/1998
23192		274	Phase I	Variable	7/1/1998
23192		275	Phase I	Variable	7/1/1998
23192		276	Phase I	Variable	7/1/1998
23192		372	Phase II-Mgmt of Rec & Leisure Svcs	Variable	7/1/1998
23192		373	Phase II	Variable	7/1/1998
23192		376	Phase II	Variable	7/1/1998
23192		378A	Phase II	Variable	7/1/1998
23192		378B	Phase II	Variable	7/1/1998
23192		421	Phase IV	Variable	7/1/1998
23192		444	Phase IV	Variable	7/1/1998
23192		450	Phase IV	Variable	7/1/1998
23192		470	Phase IV - Field Trip and Challenge Course Expenses	Variable	7/1/2001
23192		475	Phase IV-Comm Dev/Leisure Svcs	Variable	7/1/2003
23192		476	Phase IV	Variable	7/1/1998
23192		479	Phase IV - Ecotourism: Principles & Practices	Variable	7/1/2003
23192		480	Phase IV	Variable	7/1/1998
22043	Physics/Astronomy	101, 201, 205	Lab Fee	13.58	7/1/2006
22043		114, 115, 116	Lab Materials/WCC Student Instruction Only	133.31	7/1/2006
22043		115, 116, 131, 132, 133	Lab Fee	19.76	7/1/2006
22043		233, 322, 323, 345, 349, 391, 392, 491, 492A, 493	Lab Fee	33.31	7/1/2006
20118	Psychology	PSY 101, 210, 220, 230, 240, 250	Lab Maintenance	Variable	7/1/2006
20118		PSY 301-305	Lab Maintenance	Variable	7/1/2005

Fund	Department		Description	2006 - 07 Fee	Last Date Changed
20118	Psychology	PSY 310, 311, 554	Lab Maintenance	Variable	7/1/2005
20138		PSY 328	Physio Materials Fee	10.00	7/1/2006
20118		PSY 410-482	Lab Maintenance	Variable	7/1/2005
20118		PSY 510-516	Lab Maintenance	Variable	7/1/2005
20087	Science Education	201, 202, 203	Matter & Energy in Physical Systems	10.33	7/1/2006
20087		294	Investigative Science	19.76	7/1/2006
20087		390/480	Elementary Science Methods	19.76	7/1/2006
20087		391/490	Elementary Laboratory/Field Experience	19.76	7/1/2006
20087		481	Teaching Science Secondary School	19.76	7/1/2006
20087		491	Secondary Science Methods	19.76	7/1/2006
20126	Speech/Hearing	457	Clinical Processes	18.50	7/1/2006
20126		458A	Beginning Clinical Practice	12.35	7/1/2006
20126		458B	Lab: Beginning Clinical Practice	18.50	7/1/2006
20126		464	Clinical Practicum in Aural Rehab	18.50	7/1/2006
20126		468	Clinical Practicum in Audiology	18.50	7/1/2006
20126		515	Seminar: Phonology	6.15	7/1/2006
20126		548	Beginning Clinical Practice	12.35	7/1/2006
20126		552A	Diagnostic Processes	12.35	7/1/2006
20126		552B	Diagnostic Processes	12.35	7/1/2006
20126		553	Seminar: Preschool Lang Development	6.15	7/1/2006
20126		555	Seminar: School-age Lang Learning	6.15	7/1/2006
20126		558	Graduate Clinic Practice	12.35	7/1/2006
20126		559	Speech-Lang Path Practicum	12.35	7/1/2006
20126		560	Speech-Lang Path Practicum	12.35	7/1/2006
20126		564	Auditory Neurophysiology	18.50	7/1/2006
20126		568	Advanced Audiology II	18.50	7/1/2006
20003	Theatre Arts	216	Costume Lab Fee	Variable	7/1/2001
20003		266/267	Musical Theatre	Variable	7/1/1997
20003		319	Millinery	Variable	7/1/2001

Fund	Department	Description	2006 - 07 Fee	Last Date Changed
Continuing Education Programs and Courses				
45607	Academy for Lifelong Learning	Annual Membership Dues - additional person at household	45.00	7/1/2001
45607		Annual Membership Dues -1st for household	65.00	7/1/2001
45608		ALL Course Fees	Variable	7/1/1998
45604	Conference Services	Conferences	Variable	7/1/1990
20033	Foreign Studies Course	Application Fee	60.00	7/1/2005
20033		Application Fee for Non-WWU Students	105.00	7/1/2002
20033		Concurrent Enrollment Fee	200.00	7/1/2006
20033		Incoming Student - Per Quarter	Variable	7/1/2002
20033		SEVIS Compliance Fee	100.00 Annual	7/1/2003
25304	Independent Learning	Correspondence	95.00	7/1/2005
25304		Correspondence Registration Fee	20.00	7/1/2000
25304		Enrollment Renewal Fee	35.00	7/1/2001
25304		Special Course Fee	Variable	7/1/2006
25304		Videotape Course Fee	29.00	7/1/2001
25304		Videotape Refundable Deposit Fee	30.00	7/1/2000
22041	Int'l English Lang Institute	Application Fee	50.00	7/1/2004
22041		Student Fee Per Quarter	2,065.00	7/1/2005
22041		Summer Tuition	1,925.00	7/1/2006
25113	MIMSUP - Shannon Point Marine Center	Special Course Fee	Variable	7/1/2001
25113		Undergraduate Course Workshop	273.00 per credit	7/1/2003
45602	Non-Credit Certificate Programs	Certificate Programs Fee	Variable	7/1/2001
25114	Professional Certificate	Extended Student Service Fee	6.00 per credit	7/1/2004
25114		Graduate Course Workshop	Variable	7/1/2002
25114		Special Course Fee	Variable	7/1/2001
25114		Undergraduate Course Workshop	Variable	7/1/2002
25306	Professional Development	Extended Student Service Fee	6.00 per credit	7/1/2004
25306		Graduate Course Workshop	223.00 per credit	7/1/2006
25306		Individual Credit Option	48.00 per credit	7/1/2002
25306		Online Non-program Course Workshop	123.00 per credit	7/1/2006
25306		Special Course Fee	Variable	7/1/2000
25306		Undergraduate Course Workshop	178.00 per credit	7/1/2006

Fund	Department	Description	2006 - 07 Fee	Last Date Changed
25302	Space Available for Non-Matriculated Students	Extended Student Service Fee	6.00 per credit	7/1/2004
25302		SPAN Program	163.00 per credit	7/1/2006
45606	Youth Programs	Youth Programs Fee	Variable	7/1/2001
Degree Programs via EESP				
25111	CHSS: Communication Sciences & Disorders	Credit Option	48.00 per contract	7/1/2001
25111		Extended Student Service Fee	6.00 per credit	7/1/2004
25111		Graduate Course Workshops	223.00 per credit	7/1/2006
25111		Special Course Fee	Variable	7/1/2001
25111		Undergraduate Course Workshop	178.00 per credit	7/1/2006
25110	CST: Vehicle Design	Credit Option	48.00 per contract	7/1/2001
25110		Extended Student Service Fee	6.00 per credit	7/1/2004
25110		Graduate Course Workshop	223.00 per credit	7/1/2006
25110		Special Course Fee	Variable	7/1/2001
25110		Undergraduate Course Workshop	178.00 per credit	7/1/2006
25112	Huxley: Environmental Studies	Credit Option	48.00 per credit	7/1/2006
25112		Extended Student Service Fee	6.00 per credit	7/1/2004
25112		Lab Fee	Variable	7/1/2004
25112		Special Course fee	Variable	7/1/2006
25112		Undergraduate Course Workshop	173.00 per credit	7/1/2006
25106	Woodring: Adult & Higher Education	Extended Student Service Fee	6.00 per credit	7/1/2004
25106		Graduate Course Workshop	223.00 per credit	7/1/2006
25106		Special Course Fee	Variable	7/1/2001
25106		Undergraduate Course Workshop	178.00 per credit	7/1/2006
24050	Woodring: Community Colleges Programs	Graduate Course	223.00	7/1/2006
24050		Materials Fee	Variable	7/1/2001
24050		Undergraduate Course	178.00	7/1/2006
25107	Woodring: Education Administration	Extended Student Service Fee	6.00 per credit	7/1/2004
25107		Graduate Course Workshop	223.00 per credit	7/1/2006
25107		Special Course Fee	Variable	7/1/2001
25107		Undergraduate Course Workshop	178.00 per credit	7/1/2006
25104	Woodring: Elementary Education	Extended Student Service Fee	6.00 per credit	7/1/2004
25104		Graduate Course Workshop	223.00 per credit	7/1/2006

Fund	Department	Description	2006 - 07 Fee	Last Date Changed
25104	Woodring: Elementary Education	Special Course Fee	Variable	7/1/2001
25104		Undergraduate Course Workshop	178.00 per credit	7/1/2006
25103	Woodring: Human Services	Extended Student Service Fee	6.00 per credit	7/1/2004
25103		Graduate Course Workshop	223.00 per credit	7/1/2006
25103		Special Course Fee	Variable	7/1/2001
25103		Undergraduate Course Workshop	178.00 per credit	7/1/2006
25108	Woodring: MA in Rehabilitation Counseling	Extended Student Service Fee	6.00 per credit	7/1/2004
25108		Graduate Course Workshop	223.00 per credit	7/1/2006
25108		Special Course Fee	Variable	7/1/2001
25108		Undergraduate Course Workshop	178.00 per credit	7/1/2006
25115	Woodring: Off-Campus Student Teaching	Extended Student Service Fee	6.00 per credit	7/1/2004
25115		Graduate Course Workshop	223.00 per credit	7/1/2006
25115		Special Course Fee	Variable	7/1/2001
25115		Undergraduate Course Workshop	178.00 per credit	7/1/2006
25105	Woodring: Secondary Education	Extended Student Service Fee	6.00 per credit	7/1/2004
25105		Graduate Course/Off-Campus Program	223.00 per credit	7/1/2006
25105		Individual Credit Option	48.00	7/1/2001
25105		Special Course Fee	Variable	7/1/2001
25105		Undergraduate Course/Off-Campus Program	178.00 per credit	7/1/2006
25116	Woodring: Special Education	Extended Student Services Fee	6.00 per credit	7/1/2005
25116		Graduate Course Workshop	223.00 per credit	7/1/2006
25116		Special Course Fee	Variable	7/1/2006
25116		Undergraduate Course Workshop	178.00 per credit	7/1/2006
25109	Woodring: Teaching English to Speakers of Other Languages	Credit Option	48.00 per contract	7/1/2001
25109		Extended Student Service Fee	6.00 per credit	7/1/2004
25109		Graduate Course Workshop	223.00 per credit	7/1/2006
25109		Special Course Fees	Variable	7/1/2001
25109		Undergraduate Course Workshop	178.00 per credit	7/1/2006
Summer Session				
25202	Summer Session - FTE Classes-Even Years	Graduate Course Workshop-Non Resident	183.00 per credit	7/1/2006
25202		Graduate Course Workshops-Residents	173.00 per credit	7/1/2006
25202		Individual Credit Option	48.00	7/1/2001

Fund	Department	Description	2006 - 07 Fee	Last Date Changed
25202	Summer Session - FTE Classes-Even Years	Special Course Fee	Variable	7/1/2001
25202		Undergraduate Course Workshop-Non Resident	132.00 per credit	7/1/2006
25202		Undergraduate Course Workshop-Residents	122.00 per credit	7/1/2006
25203	Summer Session - FTE Classes-Odd Years	Graduate Course Workshop-Non Resident	183.00 per credit	7/1/2006
25203		Graduate Course Workshop-Resident	173.00 per credit	7/1/2006
25203		Individual Credit Option	48.00	7/1/2001
25203		Special Course Fee	Variable	7/1/2001
25203		Undergraduate Course Workshop-Non Resident	132.00 per credit	7/1/2006
25203		Undergraduate Course Workshop-Resident	122.00 per credit	7/1/2006
25204	Summer Session Enrichment Workshops-Even Years	Graduate Course Workshops-Non Resident	183.00 per credit	7/1/2006
25204		Graduate Course Workshops-Resident	173.00 per credit	7/1/2006
25204		Individual Credit Option	48.00	7/1/2001
25204		Special Course Fee	Variable	7/1/2001
25204		Undergraduate Course Workshop-Non Resident	132.00 per credit	7/1/2006
25204		Undergraduate Course Workshop-Resident	122.00 per credit	7/1/2006
25205	Summer Session Enrichment Workshops-Odd Years	Graduate Course Workshops-Non Resident	183.00 per credit	7/1/2006
25205		Graduate Course Workshops-Resident	173.00 per credit	7/1/2006
25205		Individual Credit Option	48.00	7/1/2001
25205		Special Course Fee	Variable	7/1/2001
25205		Undergraduate Course Workshop-Non Resident	132.00 per credit	7/1/2006
25205		Undergraduate Course Workshop-Resident	122.00 per credit	7/1/2006
25201	Summer Session Overhead	Registration Fee - In-State	60.00 per student	7/1/2006
25201		Registration Fee - Out-of-State	60.00 per student	7/1/2006

2006 - 2007

Service Fees

Fund	Department	Description	2006 - 07 Fee	Last Date Changed
23127	Academic Advising	Student Reinstatement Application Fee	50.00	7/1/2002
23068	Admissions	Forfeited Enrollment Deposit-split w/Institution (50%)	250.00	7/1/2004
23068		Undergraduate Admissions Application	50.00	7/1/2005
23070		Western Preview Program	10.00	7/1/2000
20002	Art	Student Late Fees (per day/per order)	1.00	7/1/2002
20002		Student Slide lost/damage	10.00 per slide	7/1/2002
23042	Assessment/Testing	Testing and Scoring	4.00 per examinee	7/1/2000
24035		Changes to Accepted Survey Form	19.40 per hr	7/1/2000
24035		Credit by Examination (course challenge)	30.00 per credit	7/10/2005
24035		Form Design/per side	75.00	7/1/2001
24035		Major Field Test	35.00	7/1/2006
24035		Math Placement Test	15.00	7/1/2002
24035		Miller Analogies Test	60.00	7/1/2005
24035		Non-WWU Correspondence Courses	10.00	7/1/2000
24035		Scanner Programming of Form/per side	25.00	7/1/2001
24035		Scanning	17.25 per 30 mins	7/1/2000
24035		Scantron Answer Sheets	0.05	7/1/2000
24035		Statistical Analysis of Data	22.50 per hr	7/1/2000
24035		WWU Extended Program	2.50	7/1/2000
45010	Athletics	Strength/Fitness Center Membership	70.00	7/1/1999
45010		Ticket Prices		
45010		Basketball (Men's/Women's): General Seating	7.00	7/1/2002
45010		Basketball (Men's/Women's): Reserved Seating	12.00	7/1/2006
45010		Basketball (Men's/Women's): Season Ticket	120.00	7/1/2005
45010		Basketball (Men's/Women's): Senior	5.00	7/1/2005
45010		Basketball (Men's/Women's): WWU Students	4.00	7/1/2002
45010		Football: General Seating	8.00	7/1/2002
45010		Football: Reserved Seating, 1/2 Section B&D	12.00	7/1/2006
45010		Football: Reserved Seating, Section C	12.00	7/1/2006
45010		Football: Season Ticket	72.00	7/1/2005
45010		Football: Senior	6.00	7/1/2005
45010		Football: WWU Students	5.00	7/1/2006
45010		Haggen Family of Four Package: Basketball	20.00	7/1/2005

2006 - 2007

Service Fees

Fund	Department	Description	2006 - 07 Fee	Last Date Changed
45010	Athletics	Ticket Prices Haggen Family of Four Package: Football	24.00	7/1/2005
45010		Ticket Prices Haggen Family of Four Package: Volleyball	16.00	7/1/2005
45010		Ticket Prices Soccer: General Seating	5.00	7/1/2005
45010		Ticket Prices Soccer: Season Ticket	50.00	7/1/2005
45010		Ticket Prices Soccer: Senior	4.00	7/1/2005
45010		Ticket Prices Soccer: WWU Student	3.00	7/1/2005
45010		Ticket Prices Sport Package A (FB,MBB,WBB)	250.00	7/1/2005
45010		Ticket Prices Sport Package B (FB,MBB,WBB, VB, M&W Soc)	275.00	7/1/2005
45010		Ticket Prices Students: Season Pass	40.00	7/1/2002
45010		Ticket Prices Students: Season Pass with Battle in Seattle Ticket	55.00	7/1/2002
45010		Ticket Prices Track: General Admission	4.00	7/1/2006
45010		Ticket Prices Track: Student	3.00	7/1/2006
45010		Ticket Prices Volleyball: General Seating	5.00	7/1/2001
45010		Ticket Prices Volleyball: Season Ticket	40.00	7/1/2005
45010		Ticket Prices Volleyball: Seniors	4.00	7/1/2006
45010		Ticket Prices Volleyball: WWU Students	3.00	7/1/2001
45051	Athletics - Intramural	Campus Recreation-Intramural Leagues	40.00 per team	7/1/2005
45051		Campus Recreation-Intramural Leagues-forfeit fee	10.00	7/1/2000
45051		Campus Recreation-Sport Club Dues-per player	36.00 minimum	7/1/2006
45051		Campus Recreation-Tournaments/Special Events	Variable	7/1/2000
23087	Athletics-Summer Sport Camps	Basketball: Resident - Girls Sport Camp Smr	295.00	7/1/2003
23087		Boys Basketball Commuter (lunch only)	195.00	7/1/2003
23087		Boys Basketball Commuter (lunch/dinner)	215.00	7/1/2003
23087		Football Camps: Resident	290.00	7/1/2003
23087		Football Commuter (lunch/dinner)	225.00	7/1/2003
23087		Football Special (50 or more)	260.00	7/1/2005
23087		Football Special Rate (30 or more)	270.00	7/1/2003
23087		Football Special Rate (15 or more)	280.00	7/1/2003
23087		Girls (Lunch only)	190.00	7/1/2005
23087		Girls Sport Camp Commuter (lunch/dinner)	210.00	7/1/2003
23087		Team & Individual: Resident-Boys Bball Camp	299.00	7/1/2003
23087		Volleyball Commuter (lunch & dinner)	215.00	7/1/2003

Fund	Department	Description	2006 - 07 Fee	Last Date Changed
23087	Athletics-Summer Sport Camps	Volleyball: Resident	290.00	7/1/2003
21001	Biology	Biology Key Deposit	10.00	7/2/1996
42000	Bookstore	Returned Check Fee (2nd Occurrence)	50.00	7/1/2006
42000		Booklist Information	0.15 per page	7/1/1997
42000		Returned Check Fee (1st Occurrence)	25.00	7/1/2001
23069	Career Services	Assessment Combined Report	5.00	7/1/1998
23069		Career Fair, Charge for Early Bird Registration	150.00	7/1/2006
23069		Career Fair, Charge for Employers	200.00	7/1/2005
23069		Career Fair, Charge for Employers Share Table	100.00	7/1/2006
23069		Employer Administrative Charge	25.00	7/2/1996
23069		Employer Charge for Candidate Referral	30.00	7/1/2000
23069		Employer Partners Program-Program A	\$500 - \$999	7/1/2005
23069		Employer Partners Program-Program B	\$1000 - \$1999	7/1/2005
23069		Employer Partners Program-Program C	2,000.00 +	7/1/2005
23069		International Fair Registration	50.00	7/1/2002
23069		Registration: Alumni & 5th Yr Ed Cert Students (combines file setup with access to other services)	35.00 for 4 months	7/1/1999
23069	Assessment Tests	Alumni & 5th Yr Ed Cert Students Combined Report	5.00	7/1/1998
23069	Assessment Tests	Alumni & 5th Yr Ed Cert Students MBTI or Strong	20.00	7/1/2002
23069	Assessment Tests	Alumni & 5th Yr Ed Cert Students MBTI Paper Packet	5.00	7/1/1998
23069	Assessment Tests	Combined Career Rpt-Baccalaureate, master's or initial teaching certification students	5.00	7/1/1998
23069	Assessment Tests	Community People-Combined Career Rpt	5.00	7/1/1996
23069	Assessment Tests	Community People-MBTI or STRONG	25.00	7/1/2000
23069	Assessment Tests	Community People-MBTI Packet	5.00	7/1/1996
23069	Assessment Tests	Former Students-Combined Career Report	5.00	7/1/1998
23069	Assessment Tests	Former Students-MBTI or STRONG	20.00	7/1/2000
23069	Assessment Tests	Former Students-MBTI Packet	5.00	7/1/1998
23069	Assessment Tests	MBTI or STRONG-Baccalaureate, master's or initial teaching certification students	20.00	7/1/2002
23069	Assessment Tests	MBTI Pkt-Baccalaureate, master's or initial teaching certification students	5.00	7/1/1998
23069	Assessment Tests	WWU Staff-Combined Career Rpt	5.00	7/1/1998
23069	Assessment Tests	WWU Staff-MBTI or STRONG	20.00	7/1/2000
23069	Assessment Tests	WWU Staff-MBTI Packet	5.00	7/1/1998
23069	Counseling Appt/Wkshops	Community People-per appointment	25.00	7/1/1998

2006 - 2007

Service Fees

Fund	Department	Description	2006 - 07 Fee	Last Date Changed
23069	Career Services	Counseling Appt/Wkshops Former Students-per appointment	25.00	7/1/1996
23069		Graduate School Level A Special Event Fee	50.00	7/1/2005
23069		Graduate School Level B Special Event Fee	80.00	7/1/2005
23069		Graduate School Level C Special Event Fee	100.00	7/1/2006
23069		Job Opportunity Bulletin Alumni & 5th Yr Ed Cert Students (combines file setup with access to other services)	Free access via website	7/1/2002
23069		Job Opportunity Bulletin Baccalaureate, Master's or initial Teaching Certification students	Free access via website	7/1/2002
23069		Job Opportunity Bulletin Baccalaureate, Master's or initial Teaching Certification students	Free access via website	7/1/2004
23069		Job Opportunity Bulletin Community People-per category for each four month period	Access available in CSC	7/1/2004
23069		Job Opportunity Bulletin Community People-Processing Fee	Access available in CSC	7/1/2004
23069		Job Opportunity Bulletin Former Students-per category for each four-month period for paper bulletin	Access available in CSC	7/1/2004
23069		Job Opportunity Bulletin Former Students-Processing Fee	Access available in CSC	7/1/2004
23069		Placement Files Alumni & 5th Yr Ed Cert Students (combines file setup with access to other services)-Duplicate Packet	5.00	7/1/1998
23069		Placement Files Alumni & 5th Yr Ed Cert Students (combines file setup with access to other services)-File on a disk	3.00 file on disk	7/1/1996
23069		Placement Files Alumni & 5th Yr Ed Cert Students (combines file setup with access to other services)-File Reactivation	10.00	7/1/1996
23069		Placement Files Alumni & 5th Yr Ed Cert Students (combines file setup with access to other services)-Forward Letters	2.00 each	7/1/1996
23069		Placement Files Alumni & 5th Yr Ed Cert Students (combines file setup with access to other services)-Send a file	4.00 each	7/1/1996
23069		Placement Files Alumni & 5th Yr Ed Cert Students (combines file setup with access to other services)-Special Handling Fee	15.00	7/1/1999
23069		Placement Files Baccalaureate, Master's or initial Teaching Certification students	4.00 additional files	7/1/2002
23069		Placement Files Baccalaureate, Master's or initial Teaching Certification students	3.00 first file sent free	7/1/1996
23069		Placement Files Baccalaureate, Master's or initial Teaching Certification students	30.00 set up file (incl disk)	7/1/2000
23069		Placement Files Baccalaureate, Master's or initial Teaching Certification students	5.00 duplicate paper packet	7/1/1998
23069		Placement Files Baccalaureate, Master's or initial Teaching Certification students	3.00 file on disk	7/1/1996
23069		Placement Files Baccalaureate, Master's or initial Teaching Certification students	15.00 special handling	7/1/1999
23069		Placement Files Setup fee	30.00	7/1/2000
23069		Placement Files Special placement file handling fee	15.00	7/1/1999
23069		Placement Files Template fee	3.00	7/2/1996
24009	Cashier	Cashier Service	26.00 per hour	7/1/2005
24009		Check Cashing Fee, Instit.	1.00	7/1/2006
24009		Check Cashing Fee, Personal	1.00	7/1/2002
24009		Copies of W-2's	6.00	7/1/2001
24009		Interest charge on all past due balances-split w/Housing,Registrar,Cashier	1%	7/1/2002
24009		Late Add Fee-split w/Housing,Registrar,Cashier	10.00 per credit	7/1/2002

2006 - 2007

Service Fees

Fund	Department	Description	2006 - 07 Fee	Last Date Changed
24009	Cashier	Late payment fee on balances of \$500 or more after first 15th of quarter-split w/Housing,Registrar,Cashier	75.00 per quarter	7/1/2002
24009		Notary Public Services	5.00	7/1/1999
24009		Replacement Copy of 1098T- Student Tuition/Scholarship form	6.00	7/1/2003
24009		Returned Check Fee (1st Occurrence)	25.00	7/1/2001
24009		Returned Check Fee (2nd Occurrence)	50.00	7/1/2002
23175	Center Pacific NW Studies	Additional Uses	Variable	7/1/2002
23175		Commercial Reproduction and Publication fee	50.00 per image	7/1/2002
23175		Digitizing Images, on site, more than 10 images labor plus scanning fee	15.00 per hr labor + scanning fee	7/1/2002
23175		Digitizing Images, on site, up to 10 images	2.00 per image	7/1/2002
23175		Production Fees, B & W Prints 5 x 7	10.00	7/1/2003
23175		Production Fees, B & W Prints 8 x 10	10.00	7/1/2003
24025	CFPA	Room Rental Rates Concert Hall	600.00 per day	7/1/2001
24025		Room Rental Rates Concert Hall	120.00 per hr	7/1/2001
24025		Room Rental Rates Main Auditorium	1,000.00 per day	7/1/2001
24025		Room Rental Rates Old Main Theatre	300.00 per day	7/1/1995
24025		Room Rental Rates PAC 199 or PAC 16	24.00 per hr	7/1/2001
24025		Room Rental Rates PAC 199 or PAC 16	120.00 per day	7/1/2001
24025		Student Labor Recharge Rates Deck Hand/Other	8.73	7/1/2005
24025		Student Labor Recharge Rates House Manager	11.00	7/1/2005
24025		Student Labor Recharge Rates Lead Technician	12.00	7/1/2006
24025		Student Labor Recharge Rates Master Electrician	11.00	7/1/2005
24025		Student Labor Recharge Rates Sound Technician	9.82	7/1/2005
24025		Student Labor Recharge Rates Student Labor Recharge Rates-Electrician	9.82	7/1/2005
21002	Chemistry	Non-Compliance Check-Out Charge	15.00	7/1/2000
24060	Collection Fees and Costs	Collection Agency Fee	Pass Through	7/1/2000
24060		In House Collection Cost/Late Charge	41.00	7/1/2005
24060		Legal Charges	Pass Through	7/1/2000
45604	Conference Services	Rental Fees General Classrooms: Capacity 100 plus (minimum charge is 3 hours)-applies to outside agency or person	20.00 per hour	7/1/2002
45604		Rental Fees General Classrooms: Capacity 10-30 (minimum charge is 3 hours)-applies to outside agency or person	8.00 per hour	7/1/2002
45604		Rental Fees General Classrooms: Capacity 185 (FH 2 & 3) (minimum charge is 3 hours)-applies to outside agency or person	25.00 per hour	7/1/2002
45604		Rental Fees General Classrooms: Capacity 30-99 (minimum charge is 3 hours)-applies to outside agency or person	15.00 per hour	7/1/2002
45604		Rental Fees General Classrooms: Capacity 310 (FH 4) (minimum charge is 3 hours)-applies to outside agency or person	30.00 per hour	7/1/2002

Fund	Department	Description	2006 - 07 Fee	Last Date Changed	
45604	Conference Services	Rental Fees	General Classrooms: Capacity 461 (AH 100) (minimum charge is 3 hours)-applies to outside agency or person	40.00 per hour or \$120 per day	7/1/2002
45604		Rental Fees	Special Areas: Carver Gym B: Capacity 3000-applies to outside agency or person (based on one-time use)	750.00	7/1/2002
45604		Rental Fees	Special Areas: Carver Gyms A, C, D: Capacity Variable-applies to outside agency or person (based on one-time use)	200.00	7/1/2002
45604		Rental Fees	Special Areas: Carver Swimming Pool-applies to outside agency or person (based on one-time use)	30.00 per hour	7/1/2002
45604		Rental Fees	Special Areas: Concert Hall: Capacity 711-applies to outside agency or person (based on one-time use)	500.00	7/1/2002
45604		Rental Fees	Special Areas: Fairhaven Auditorium: Capacity 185-applies to outside agency or person (based on one-time use)	25.00	7/1/2002
45604		Rental Fees	Special Areas: LH1 (OMIOOL) Capacity 200-applies to outside agency or person (based on one-time use)	100.00	7/1/2002
45604		Rental Fees	Special Areas: Main Auditorium: Capacity 1150-applies to outside agency or person (based on one-time use)	900.00	7/1/2002
45604		Rental Fees	Special Areas: Miller Hall 163: Capacity 175-applies to outside agency or person (based on one-time use)	75.00	7/1/2002
45604		Teleconferences	Equipment rental, Installation, Wire activation-applies to outside agency or person	90.00	7/1/2002
45604		Teleconferences	Running Time-Recording Tape-applies to outside agency or person	18.00 per hour	7/1/2002
45604		Teleconferences	Set-up (downlink, reception)-applies to outside agency or person	25.00	7/1/2002
20023	Engineering Technology: Industrial	Rapid Prototyping Laboratories	Variable	7/1/2000	
22999	Environmental Health and Safety	Optional Student Professional Liability Insurance	20.00	7/1/2006	
21003	Fine/Performing Arts	Key Deposit	25.00	7/1/1993	
23188		Adult - Tickets	\$17 - \$30	7/1/2005	
23188		Seniors - Tickets	\$15 - \$30	7/1/2005	
23188		Student - RUSH	6.00	7/1/1999	
23188		Student - Tickets	\$10 - \$20	7/1/2005	
23188		Western Family - Tickets	\$12 - \$24	7/1/2005	
23189	Forensics	Debate Team Fees, College Tournament	60.00	7/1/2004	
23189		Debate Team Fees, High School Tournament	30.00	7/1/2004	
23189		Debate Team Fees, HS Tourn Lincoln Douglas	20.00	7/1/2004	
23189		Hired Judge Penalty Fee Uncovered Debate Teams	100.00	7/1/1997	
23189		Hired Judge Penalty Fee Uncovered Individual	10.00	7/1/2004	
23189		IE Fee, College Tournament	7.00	7/1/1997	
23189		NFC Fee, College Tournament	5.25	7/1/2004	
23189		School Fee, Both Tournaments	30.00	7/1/1997	
23039	Graduate School	Graduate Admissions Application Fee	50.00	7/1/2006	
23073	Health Services	Alcohol/Drug Screening & Intervention	50.00 per referral	7/1/2003	
23073		CPR Class	20.00	7/1/2006	
23073		CPR/First Aid Combined Class	30.00	7/1/2006	

2006 - 2007

Service Fees

Fund	Department	Description	2006 - 07 Fee	Last Date Changed
23073	Health Services	First Aid Class	20.00	7/1/2006
23073		Varsity Athletic Health fee	100.00 per year	7/1/2003
23073	Equipment	Ankle Compression Wrap	10.00	7/1/2002
23073	Equipment	Cane, weekly rental	5.00	7/1/2006
23073	Equipment	Canvas Rocker	20.00	7/1/2006
23073	Equipment	Cervical Collar	8.00	7/1/2002
23073	Equipment	Clavicle Strap	15.00	7/1/2003
23073	Equipment	Cold/Hot Pack	3.00	7/1/2002
23073	Equipment	Crutches, if not returned in 2 wks	40.00	7/1/2002
23073	Equipment	Elastic Bandage Wrap 2"	5.00	7/1/2002
23073	Equipment	Elastic Bandage Wrap 3"	6.00	7/1/2002
23073	Equipment	Elastic Bandage Wrap 4"	7.00	7/1/2002
23073	Equipment	Elastic Bandage Wrap 6"	8.00	7/1/2002
23073	Equipment	Heel Cup	10.00	7/1/2003
23073	Equipment	Peak Flow Meter	20.00	7/1/2003
23073	Equipment	Rib Belt	12.00	7/1/2005
23073	Equipment	Sling	10.00	7/1/2005
23073	Equipment	Splint, Ankle, Aircast	44.00	7/1/2002
23073	Equipment	Splint, Ankle, ASO	45.00	7/1/2006
23073	Equipment	Splint, Elastic, Forearm	25.00	7/1/2006
23073	Equipment	Splint, Elastic, Wrist	20.00	7/1/2006
23073	Equipment	Splint, Shoulder Immobilizer	35.00	7/1/2006
23073	Equipment	Splint: Finger, All Types of	7.50	7/1/2003
23073	Equipment	Splint: Knee-Universal, 18"	35.00	7/1/2006
23073	Equipment	Splint: Knee-Universal, 20"	37.00	7/1/2006
23073	Equipment	Splint: Knee-Universal, 22"	37.00	7/1/2006
23073	Equipment	Splint: Ryno-Lacer	35.00	7/1/2006
23073	Equipment	Splint: Walking Boot	85.00	7/1/2006
23073	Equipment	Splint: Walking Boot, Mid-Calf	80.00	7/1/2006
23073	Family Planning	Alesse	25.00	7/1/2006
23073	Family Planning	Camila	30.00	7/1/2006
23073	Family Planning	DEPO-Provera Inj, Admin Only	10.00	7/1/2003

Fund	Department	Description	2006 - 07 Fee	Last Date Changed
23073	Health Services	Family Planning	DEPO-Provera, Per injection	80.00 7/1/2006
23073		Family Planning	Desogen	20.00 7/1/2006
23073		Family Planning	Diaphragm Fitting	20.00 7/1/2004
23073		Family Planning	Enpresse	30.00 7/1/2006
23073		Family Planning	IUD Insertion	60.00 7/1/2006
23073		Family Planning	Nuvaring (1 each)	25.00 7/1/2006
23073		Family Planning	Ortho Evra Patch (1 each)	15.00 7/1/2006
23073		Family Planning	Ortho Evra Patch (3 each)	35.00 7/1/2006
23073		Family Planning	Ortho Tri-Cyclen LO	20.00 7/1/2006
23073		Family Planning	Ortho-Cyclen	15.00 7/1/2006
23073		Family Planning	Ortho-Novum 1/35	16.00 7/1/2006
23073		Family Planning	Plan B	20.00 7/1/2006
23073		Family Planning	Portia	30.00 7/1/2006
23073		Family Planning	Previfem	25.00 7/1/2006
23073		Family Planning	Tri-Previfem	25.00 7/1/2006
23073		Immunizations/PPD	Immunization, Adacel	38.00 7/1/2006
23073		Immunizations/PPD	Immunization, Dacavac TD Vaccine	20.00 7/1/2005
23073		Immunizations/PPD	Immunization, Flu	15.00 7/1/2003
23073		Immunizations/PPD	Immunization, Hepatitis A	30.00 7/1/2002
23073		Immunizations/PPD	Immunization, Hepatitis B	35.00 7/1/2002
23073		Immunizations/PPD	Immunization, Hepatitis B (<20 years)	10.00 7/1/2003
23073		Immunizations/PPD	Immunization, Menactra	90.00 7/1/2006
23073		Immunizations/PPD	Immunization, Menomune	90.00 7/1/2005
23073		Immunizations/PPD	Immunization, MMR	15.00 7/1/2002
23073		Immunizations/PPD	Immunization, Polio	25.00 7/1/2002
23073		Immunizations/PPD	Immunization, Rabies IM, Rabavert	200.00 7/1/2006
23073		Immunizations/PPD	Immunization, Typhoid, Oral	35.00 7/1/2003
23073		Immunizations/PPD	Immunization, Typhoid, Typhim-VI	42.00 7/1/2003
23073		Immunizations/PPD	Immunization, Yellow Fever	72.00 7/1/2003
23073		Immunizations/PPD	Immunization, Twinrix (Hepatitis A & B)	46.00 7/1/2002
23073		Immunizations/PPD	Overnight Shipping, Travel Vaccine(s)	20.00 7/1/2002
23073		Immunizations/PPD	TB Skin Test	10.00 7/1/2003

2006 - 2007

Service Fees

Fund	Department	Description	2006 - 07 Fee	Last Date Changed
23073	Health Services	Lab Tests	Accutane Panel	25.00 7/1/2006
23073		Lab Tests	Blood Glucose by Glucometer	6.00 7/1/2002
23073		Lab Tests	CBC w/ Automated Differential	10.00 7/1/2003
23073		Lab Tests	CBC w/ Hand Differential Count	18.00 7/1/2003
23073		Lab Tests	Cholestech Lipid Panel	15.00 7/1/2006
23073		Lab Tests	Cholestech TC and HDL Panel	15.00 7/1/2006
23073		Lab Tests	Flu Test	20.00 7/1/2003
23073		Lab Tests	Genital Culture, w/out sensitivity	15.00 7/1/2003
23073		Lab Tests	Hemacult, series of 3	6.00 7/1/2002
23073		Lab Tests	Hemoglobin	6.00 7/1/2006
23073		Lab Tests	Hepatitis A, AntibodyTotal IGG & IGM	35.00 7/1/2006
23073		Lab Tests	Herpes Culture	35.00 7/1/2006
23073		Lab Tests	HIV-1/HIV-2 Single Assay	25.00 7/1/2005
23073		Lab Tests	HPV DNA AMP Probe	60.00 7/1/2006
23073		Lab Tests	Manual Differential (for CBC, use with SP)	10.00 7/1/2005
23073		Lab Tests	Mono Test, Rapid	10.00 7/1/2002
23073		Lab Tests	Mumps Titer	15.00 7/1/2006
23073		Lab Tests	Pap and CT From NWP	55.00 7/1/2006
23073		Lab Tests	Pap and GC From NWP	55.00 7/1/2006
23073		Lab Tests	Pap Smear, AutoCyte LP	35.00 7/1/2006
23073		Lab Tests	Pap with CT and GC From NWP	65.00 7/1/2006
23073		Lab Tests	Pregnancy Test, Rapid	5.00 7/1/2005
23073		Lab Tests	Rapid Strep A Assay with Optic	12.00 7/1/2006
23073		Lab Tests	Rubeola Titer	35.00 7/1/2003
23073		Lab Tests	Screening Panel 1, no lytes	60.00 7/1/2006
23073		Lab Tests	Screening Panel 2 w/Lytes	63.00 7/1/2006
23073		Lab Tests	Sed Rate	12.00 7/1/2003
23073		Lab Tests	Sensitivity (Gram pos, & neg)	18.00 7/1/2006
23073		Lab Tests	Throat Culture, without sensitivity	12.00 7/1/2006
23073		Lab Tests	Urinalysis	4.00 7/1/2002
23073		Lab Tests	Urinalysis Including Micro	5.50 7/1/2002
23073		Lab Tests	Urine Culture, without sensitivity	15.00 7/1/2004

2006 - 2007

Service Fees

Fund	Department	Description	2006 - 07 Fee	Last Date Changed
23073	Health Services	Lab Tests	Urine or Probetec Chlamydia Track DNA AMP Probe	30.00 7/1/2006
23073		Lab Tests	Urine or Probetec GC & CT	40.00 7/1/2006
23073		Lab Tests	Urine or Probetec N. Gonorrhea Track DNA AMP Probe	30.00 7/1/2006
23073		Medications	Acyclovir 400mg/#15	8.00 7/1/2006
23073		Medications	Afrin(generic), 15ml	2.50 7/1/2006
23073		Medications	Albuterol Inhaler, 17g	15.00 7/1/2006
23073		Medications	Allegra 60mg/#20	35.00 7/1/2006
23073		Medications	Allegra-SR, 180MG/#30	70.00 7/1/2006
23073		Medications	Amantadine, 100mg/#20	12.00 7/1/2003
23073		Medications	Amoxicillin, 250mg/#30	8.00 7/1/2006
23073		Medications	Amoxicillin, 500mg/#30	10.00 7/1/2006
23073		Medications	APAP/Codeine (T-3), #10	8.00 7/1/2006
23073		Medications	APAP/Codeine (T-3), #15	10.00 7/1/2006
23073		Medications	Augmentin, Generic 875-125/#20	45.00 7/1/2006
23073		Medications	Beconase AQ, 25G/spray	85.00 7/1/2006
23073		Medications	Bicillin CR	30.00 7/1/2006
23073		Medications	Bupropion HCL, 100mg/#90	40.00 7/1/2006
23073		Medications	Buspirone HCL 15mg/#30	12.00 7/1/2006
23073		Medications	Buspirone HCL 15mg/#60	20.00 7/1/2006
23073		Medications	Buspirone HCL 30 mg/#30	35.00 7/1/2006
23073		Medications	Cephalexin (Keflex) 250mg/#28	10.00 7/1/2006
23073		Medications	Cephalexin (Keflex) 500mg/#28	15.00 7/1/2006
23073		Medications	Ciprofloxacin, 500MG/#14	12.00 7/1/2005
23073		Medications	Ciprofloxacin, 500MG/#6	8.00 7/1/2005
23073		Medications	Clotrimazole 1%/15g (Derm)	5.00 7/1/2002
23073		Medications	Clotrimazole-7 CR/45g (vaginal)	10.00 7/1/2006
23073		Medications	Cough Syrup w/ Codeine	10.00 7/1/2006
23073		Medications	Diphen AF Elixir, 4-oz	5.00 7/1/2006
23073		Medications	Diphenhydramine, 25mg/#15	5.00 7/1/2006
23073		Medications	Doxepin 10MG/#30	9.00 7/1/2006
23073		Medications	Doxycycline, 100mg/#100	20.00 7/1/2006
23073		Medications	Doxycycline, 100mg/#14	8.00 7/1/2006

Fund	Department	Description	2006 - 07 Fee	Last Date Changed
23073	Health Services	Medications	Doxycycline, 100mg/#20	10.00 7/1/2006
23073		Medications	Eryth Ophthalmic Ointment, 3.59g	8.00 7/1/2006
23073		Medications	Erythromycin, 250mg/#100	20.00 7/1/2006
23073		Medications	Erythromycin, 250mg/#28	12.00 7/1/2006
23073		Medications	Erythromycin, 250mg/#40	12.00 7/1/2006
23073		Medications	Erythromycin, 400mg/#40	15.00 7/1/2006
23073		Medications	Ferrous Sulfate, 325mg/#100	7.00 7/1/2006
23073		Medications	Fluconazole, 150MG/#1	10.00 7/1/2006
23073		Medications	Fluoxetine, 20mg/#30	10.00 7/1/2006
23073		Medications	Hydrocortizone Cream 1%	5.00 7/1/2006
23073		Medications	Hydroxychloroquine, 200mg/#20	12.00 7/1/2006
23073		Medications	Ketaconazole CR. 2%/15g	25.00 7/1/2006
23073		Medications	Ketaconazole CR. 2%/30g	30.00 7/1/2003
23073		Medications	KY Jelly	3.50 7/1/2005
23073		Medications	Lidocaine 2%, Viscous, 100ml	6.00 7/1/2004
23073		Medications	Lidocaine, Gargle	13.50 7/1/2004
23073		Medications	Lithium Carbonate 300mg/#30	10.00 7/1/2006
23073		Medications	Lithium Carbonate, 300mg/#100	18.00 7/1/2006
23073		Medications	Loperamide, #12	5.00 7/1/2002
23073		Medications	Macrobid, 100mg/#14	20.00 7/1/2006
23073		Medications	Metronidazole (Flagyl) 500mg/#14	8.00 7/1/2006
23073		Medications	Miconazole Nitrate CR. 2%/30G	6.00 7/1/2002
23073		Medications	Mupirocin 2%/22G ointment	30.00 7/1/2006
23073		Medications	Mylanta, 5-oz	5.00 7/1/2004
23073		Medications	Naproxen Sodium, 550mg/#20	8.00 7/1/2006
23073		Medications	Nasarel 29mcg Nasal Spray	24.00 7/1/2006
23073		Medications	Nix Cream Rinse (permethrin)	15.00 7/1/2006
23073		Medications	Otic Suspension	25.00 7/1/2006
23073		Medications	Penicillin VK, 250mg/#40	10.00 7/1/2006
23073		Medications	Permethrin 5% cream/60G	18.00 7/1/2006
23073		Medications	Phenazopyridine, 200mg/#10 (Pyridium)	6.00 7/1/2006
23073		Medications	Prednisone, 10mg/#30	8.00 7/1/2006

Fund	Department	Description	2006 - 07 Fee	Last Date Changed
23073	Health Services	Medications	Qvar Inhaler 40MCG/7.3G	30.00 7/1/2006
23073		Medications	Ranitidine 150mg/#60	12.00 7/1/2006
23073		Medications	Ranitidine, 150mg/#30	8.00 7/1/2006
23073		Medications	Rocephin 250mg (injectable)	10.00 7/1/2006
23073		Medications	Rocephin 500mg (injectable)	15.00 7/1/2006
23073		Medications	Spacer (for inhaler)	12.00 7/1/2002
23073		Medications	Sulfa/Trimeth (Septra), #14	7.00 7/1/2006
23073		Medications	Sulfa/Trimeth (Septra), #20	9.00 7/1/2006
23073		Medications	Sulfa/Trimeth (Septra), #6	5.00 7/1/2003
23073		Medications	Sulfacet Ophthalmic, 10%/15ML	6.00 7/1/2004
23073		Medications	Tamiflu, 75MG/#10	75.00 7/1/2005
23073		Medications	Tetracycline, 250mg/#100	10.00 7/1/2006
23073		Medications	Toradol Injection	15.00 7/1/2005
23073		Medications	Trazadone, 50mg/#30	8.00 7/1/2006
23073		Medications	Triamcinolone (injectable)	10.00 7/1/2003
23073		Medications	Triamcinolone Cream, 1%/15g	6.00 7/1/2006
23073		Medications	Zithromax Z, pack	45.00 7/1/2006
23073		Medications	Zoloft, 100mg/#30	86.00 7/1/2006
23073		Procedures	Allergy Injection Single	12.00 7/1/2006
23073		Procedures	Allergy Injection: 2 or more (enter quantity as 2)	24.00 7/1/2006
23073		Procedures	Auricular Hematoma I&D W/Suture	65.00 7/1/2004
23073		Procedures	Biopsy Skin Lesion (pathology fee not included)	40.00 7/1/2003
23073		Procedures	Biopsy, Endometrial	50.00 7/1/2006
23073		Procedures	Breast Cyst Aspiration	25.00 7/1/2004
23073		Procedures	Cast Removal, Applied Elsewhere	25.00 7/1/2003
23073		Procedures	Casting On: Guantlet	75.00 7/1/2005
23073		Procedures	Casting On: Short Arm	60.00 7/1/2002
23073		Procedures	Cervical Polyp Removal (No Colpo)	25.00 7/1/2006
23073		Procedures	Colposcopy (No Colpo) ECC ONLY	25.00 7/1/2006
23073		Procedures	Colposcopy w/ Biopsy	140.00 7/1/2006
23073		Procedures	Colposcopy w/ Biopsy & ECC	165.00 7/1/2006
23073		Procedures	Colposcopy w/ ECC (No Biopsy)	125.00 7/1/2006

2006 - 2007

Service Fees

Fund	Department	Description	2006 - 07 Fee	Last Date Changed
23073	Health Services	Procedures	Colposcopy w/out Biopsy	100.00 7/1/2006
23073		Procedures	Debridement: Extensive	40.00 7/1/2006
23073		Procedures	Debridement: Simple	25.00 7/1/2006
23073		Procedures	Destr: Skin Lesion (per visit)	10.00 7/1/2006
23073		Procedures	Destr: Skin Tags (per visit)	10.00 7/1/2006
23073		Procedures	Dressing App/Change: Intermediate	12.00 7/1/2006
23073		Procedures	Dressing App/Change: Simple	7.50 7/1/2006
23073		Procedures	Ear Lavage Cerumen Removal	20.00 7/1/2006
23073		Procedures	Electrocardiogram, Complete	40.00 7/1/2006
23073		Procedures	Excision Benign Lesion: Intermed	60.00 7/1/2006
23073		Procedures	Excision Benign Lesion: Simple	45.00 7/1/2006
23073		Procedures	FB Removal: Conjunctiva	15.00 7/1/2006
23073		Procedures	FB Removal: Cornea	25.00 7/1/2006
23073		Procedures	FB Removal: Ear	25.00 7/1/2006
23073		Procedures	FB Removal: Subcut, Intermed	50.00 7/1/2005
23073		Procedures	FB Removal: Subcut, Simple	30.00 7/1/2006
23073		Procedures	Incision/Drainage: Complex	50.00 7/1/2005
23073		Procedures	Incision/Drainage: Simple	35.00 7/1/2006
23073		Procedures	Injection: IM Admin Only	10.00 7/1/2004
23073		Procedures	Injection: IV Admin Only	10.00 7/1/2004
23073		Procedures	IV Therapy: Each Bag	30.00 7/1/2006
23073		Procedures	IV Therapy: Initial Set-up (no fluid)	20.00 7/1/2006
23073		Procedures	Joint Aspiration/Injection: Complex	35.00 7/1/2006
23073		Procedures	Joint Aspiration/Injection: Simple	25.00 7/1/2006
23073		Procedures	Nail Drilling	15.00 7/1/2002
23073		Procedures	Nail Fold Wedge Excision	60.00 7/1/2006
23073		Procedures	Nail Plate Avulsion	60.00 7/1/2006
23073		Procedures	Paring or Curettment: Skin	15.00 7/1/2006
23073		Procedures	Physical Preventative Comprehensive	100.00 7/1/2006
23073		Procedures	Physical Preventative: 18 - 39 Years	75.00 7/1/2005
23073		Procedures	Repair Complex Wound	75.00 7/1/2005
23073		Procedures	Repair Intermediate Wound	55.00 7/1/2006

Fund	Department	Description	2006 - 07 Fee	Last Date Changed
23073	Health Services	Procedures	Repair Simple Wound	45.00 7/1/2006
23073		Procedures	Respiration Therapy, per TX	20.00 7/1/2006
23073		Procedures	Splint: Ankle, plaster/FG	50.00 7/1/2006
23073		Procedures	Splint: Forearm/Wrist, plaster/FG	30.00 7/1/2006
23073		Procedures	Splint: Gutter, plaster or FG	30.00 7/1/2006
23073		Procedures	Splint: Long Arm, plaster or FG	40.00 7/1/2006
23073		Procedures	Spruometry	15.00 7/1/2006
23073		Procedures	Spruometry, w/ Bronchodilator	35.00 7/1/2006
23073		Procedures	Travel Consult w/ MD, 30 minutes	60.00 7/1/2006
23073		Procedures	Travel Consult w/ RN	20.00 7/1/2006
23073		Procedures	Travel Consult, w/ MD, 15 minutes	25.00 7/1/2006
23073		Procedures	Trigger Point Injection, Admin Only	10.00 7/1/2005
44010	Housing & Dining	Be Our Guest Program	Admissions	2.75 7/1/2003
44010		Be Our Guest Program	Groups of 10+	4.00 7/1/2003
44010		Be Our Guest Program	Woodring	3.40 7/1/2003
44010		Conferences: Guest Housing	Linen (unless provided in rate)	21.00 7/1/2002
44010		Conferences: Guest Housing	Linen Room Base Rate: Double Occupancy (per person/per night, full linen service)	27.70 7/1/2006
44010		Conferences: Guest Housing	Linen Room Base Rate: Single Occupancy (per person/per night, full linen service)	41.80 7/1/2006
44010		Conferences: Guest Housing	Linen Room Rate Discount: 14 - 27 nights	7.5% 7/1/2005
44010		Conferences: Guest Housing	Linen Room Rate Discount: 28+ nights	10% 7/1/2005
44010		Conferences: Guest Housing	Linen Room Rate Discount: 7 - 13 nights	5% 7/1/2005
44010		Conferences: Guest Housing	Lost Key	Lockshop recharge 7/1/2002
44010		Conferences: Guest Housing	Micro fridge Rental	125.00 per academic yr 7/1/2001
44010		Conferences: Guest Housing	Non-Linen Room Base Rate: Double Occupancy (per person/per night)	21.40 7/1/2006
44010		Conferences: Guest Housing	Non-Linen Room Base Rate: Single Occupancy (per person/per night)	24.50 7/1/2006
44010		Conferences: Guest Housing	Non-Linen Room Rate Discount: 14 - 27 nights	10% 7/1/2005
44010		Conferences: Guest Housing	Non-Linen Room Rate Discount: 28+ nights	20% 7/1/2005
44010		Conferences: Guest Housing	Non-Linen Room Rate Discount: 7 - 13 nights	5% 7/1/2005
44010		Conferences: Guest Housing	Orientation Student Advisors (OSA's)	20.00 7/1/2006
44010		Conferences: Guest Housing	Summer Start	40.00 7/1/2006
44010		Conferences: Guest Housing	Transitions Housing	40.00 7/1/2006
44010		Conferences: Guest Housing	Visiting Student: Double Occupancy	20.00 7/1/2002

Fund	Department	Description	2006 - 07 Fee	Last Date Changed	
44010	Housing & Dining	Conferences: Guest Housing	Visiting Student-Single Occupancy	24.00	7/1/2002
44010		Conferences: Guest Housing	WWU Pre-season Football	14.20	7/1/2006
44010		Conferences: Guest Housing	Youth Super Single Additional	2.50	7/1/2002
44010		Conferences: Guest Housing	Youth WWU Sport Camps (Double) (4+ nights)	17.60	7/1/2006
44010		Conferences: Guest Meals	Breakfast (Conference Staff - Interim)	4.10	7/1/2006
44010		Conferences: Guest Meals	Breakfast (Long Stay Conference +21 days)	4.10	7/1/2006
44010		Conferences: Guest Meals	Breakfast (Summer Conference)	6.54	7/1/2006
44010		Conferences: Guest Meals	Breakfast (Summer Youth Conferences)	5.89	7/1/2006
44010		Conferences: Guest Meals	Child w/parent conference guest	12.10 daily	7/1/2006
44010		Conferences: Guest Meals	Dinner (Conference Staff - Interim)	8.18	7/1/2006
44010		Conferences: Guest Meals	Dinner (Long Stay Conference)	8.18	7/1/2006
44010		Conferences: Guest Meals	Dinner (Summer Conference)	9.99	7/1/2006
44010		Conferences: Guest Meals	Dinner (Summer Youth Conferences)	9.00	7/1/2006
44010		Conferences: Guest Meals	Lunch (Conference Staff - Interim)	6.61	7/1/2006
44010		Conferences: Guest Meals	Lunch (Long Stay Conference +21 days)	6.61	7/1/2006
44010		Conferences: Guest Meals	Lunch (Summer Conference)	8.63	7/1/2006
44010		Conferences: Guest Meals	Lunch (Summer Youth Conferences)	7.88	7/1/2006
44010		Conferences: Miscellaneous	Alternative Location for 125 - 174	30.73 per day	7/1/2006
44010		Conferences: Miscellaneous	Alternative Location for 175 - 224	27.96 per day	7/1/2006
44010		Conferences: Miscellaneous	Alternative Location for 225+	25.18 per day	7/1/2006
44010		Conferences: Miscellaneous	Alternative Location for 30 - 74	36.19 per day	7/1/2006
44010		Conferences: Miscellaneous	Alternative Location for 75 - 124	33.51 per day	7/1/2006
44010		Conferences: Miscellaneous	Alternative Location for Less than 30	Negotiated	7/1/2005
44010		Conferences: Miscellaneous	Commuter Meal Card Fee	2.50	7/1/2002
44010		Conferences: Miscellaneous	Lounge Space	\$5-\$50 each per day	7/1/2003
44010		Conferences: Miscellaneous	Meeting Room Rental	\$5-\$25 each per day	7/1/2003
44010		Conferences: Miscellaneous	Summer Conference No-show Fee	1 night's lodging	7/1/2002
44010		Dining Room Rental Rates	Dining Hall Room Use	Variable	7/1/2005
44010		Dining Room Rental Rates	Dining Room Set Up	12.75 per hour	7/1/2005
44010		Dining Room Rental Rates	Fairhaven Dining Hall - Chart Room	35.00	7/1/2005
44010		Dining Room Rental Rates	Fairhaven Dining Hall - Courtyard Room	45.00	7/1/2005
44010		Dining Room Rental Rates	Fairhaven Dining Hall - Entire Dining Facility	120.00	7/1/2005

2006 - 2007

Service Fees

Fund	Department	Description	2006 - 07 Fee	Last Date Changed
44010	Housing & Dining	Dining Room Rental Rates Fairhaven Dining Hall - O'Keefe Room	45.00	7/1/2005
44010		Dining Room Rental Rates Fairhaven Dining Hall - Tropics Room	25.00	7/1/2005
44010		Dining Room Rental Rates Ridgeway Dining Hall - Gold Room	25.00	7/1/2005
44010		Dining Room Rental Rates Ridgeway Dining Hall - Entire Dining Hall	120.00	7/1/2005
44010		Dining Room Rental Rates Ridgeway Dining Hall - Highland Dining Room	45.00	7/1/2005
44010		Dining Room Rental Rates Ridgeway Dining Hall - Kappa Dining Room	45.00	7/1/2005
44010		Dining Room Rental Rates Viking Commons Dining Hall Room Use Charge - Center section	45.00	7/1/2005
44010		Dining Room Rental Rates Viking Commons Dining Hall Room Use Charge - Entire Dining Hall	120.00	7/1/2005
44010		Dining Room Rental Rates Viking Commons Dining Hall Room Use Charge - South Section	45.00	7/1/2005
44010		Dining Room Rental Rates Viking Commons Dining Hall Room Use Charge- North Section	45.00	7/1/2005
44010		Guest Meals Breakfast	5.15	7/1/2006
44010		Guest Meals Brunch	6.45	7/1/2006
44010		Guest Meals Continental breakfast	3.80	7/1/2006
44010		Guest Meals Dinner	8.45	7/1/2006
44010		Guest Meals Late Night Meal	6.45	7/1/2006
44010		Guest Meals Light Lunch	5.15	7/1/2006
44010		Guest Meals Lunch	6.45	7/1/2006
44010		Guest Meals Steak/Special Dinner	10.35	7/1/2006
44010		Laundry Rates Dry	0.50	7/1/2001
44010		Laundry Rates Laundry Card	2.00	7/1/2004
44010		Laundry Rates Linen Pack Rental	21.00	7/1/2002
44010		Laundry Rates Wash	0.75	7/1/2001
44010		Miscellaneous Housing/Dining Fees 2nd Line Telephone Charge (pass through)	13.75	7/1/1994
44010		Miscellaneous Housing/Dining Fees Aerobics/Fitness Center Classes	\$8 - \$20	7/1/1995
44010		Miscellaneous Housing/Dining Fees Apartment Contract Release Charge (\$200 Max)	2.67 per day	7/1/2002
44010		Miscellaneous Housing/Dining Fees Bed parts return to custodian	35.00	7/1/2006
44010		Miscellaneous Housing/Dining Fees Bunk Bed Reset	15.00	7/1/1998
44010		Miscellaneous Housing/Dining Fees Damage Repair	WWU FM Recharge Rate	7/1/1995
44010		Miscellaneous Housing/Dining Fees Early Move In	22.30 per night	7/1/2003
44010		Miscellaneous Housing/Dining Fees Employee ID Badge Replacement	3.00	7/1/2002
44010		Miscellaneous Housing/Dining Fees Fumigation Fee	WWU FM Recharge	7/1/2003
44010		Miscellaneous Housing/Dining Fees Housing Deposit	200.00	7/1/2000

Fund	Department	Description	2006 - 07 Fee	Last Date Changed
44010	Housing & Dining	Miscellaneous Housing/Dining Fees	Housing Staff Rate	3.31 7/1/2006
44010		Miscellaneous Housing/Dining Fees	ID Photo Image Transfer Fee	5.00 + \$0.50/image 7/1/1995
44010		Miscellaneous Housing/Dining Fees	Improper check-out charge	35.00 7/1/2002
44010		Miscellaneous Housing/Dining Fees	Interest charge on all past due balances-split w/Housing, Registrar, cashier	See WWU late fee policy 7/1/2004
44010		Miscellaneous Housing/Dining Fees	Late Add fee-split w/Housing, Registrar, cashier	See WWU late fee policy 7/1/2004
44010		Miscellaneous Housing/Dining Fees	Late Payment Fee - Meal	See WWU late fee policy 7/1/2004
44010		Miscellaneous Housing/Dining Fees	Late Payment Fee - Room	See WWU late fee policy 7/1/2004
44010		Miscellaneous Housing/Dining Fees	Late Payment Fee on balances of \$500 or more after first 15th of quarter-split w/Housing,Registrar, cashier	See WWU late fee policy 7/1/2004
44010		Miscellaneous Housing/Dining Fees	Lost Building Access Key	20.00 7/1/2005
44010		Miscellaneous Housing/Dining Fees	Lost key - minimum per lock	Lockshop recharge 7/1/2003
44010		Miscellaneous Housing/Dining Fees	Meals/Flex/Munch \$ used when system offline	Cost of the Purchased Items 7/1/2006
44010		Miscellaneous Housing/Dining Fees	Quarter Break Housing	35.00 per week without 7/1/2005
44010		Miscellaneous Housing/Dining Fees	Refrigerator Rental	25.00 per academic year 7/1/2004
44010		Miscellaneous Housing/Dining Fees	Refrigerator/MicroFridge Cleaning	15.00 7/1/2004
44010		Miscellaneous Housing/Dining Fees	Refrigerator/MicroFridge Transport	20.00 7/1/2004
44010		Miscellaneous Housing/Dining Fees	Replace damaged key (pass through)	Lockshop recharge 7/1/2003
44010		Miscellaneous Housing/Dining Fees	Residence Hall Contract Release Charge	5.25 per day; \$400 max 7/1/2002
44010		Miscellaneous Housing/Dining Fees	Room access during quarter break/storage access	35.00 7/1/2002
44010		Miscellaneous Housing/Dining Fees	Room Packing Fee	WWU custodial hourly recharge + 7/1/2005
44010		Miscellaneous Housing/Dining Fees	Storage Access/Room Access/ Lost & Found	35.00 7/1/2003
44010		Miscellaneous Housing/Dining Fees	Storage fee	50.00 7/1/1994
44010		Miscellaneous Housing/Dining Fees	Tampering with or disabling door safety device	FM Recharge Passthrough 7/1/2006
44010		Miscellaneous Housing/Dining Fees	Telephone Rental Guest Housing	5.00 7/1/2006
44010		Miscellaneous Housing/Dining Fees	Transport to Warehouse	WWU transport services hourly 7/1/2005
44010		Miscellaneous Housing/Dining Fees	Unauthorized Access	35.00 7/1/1995
44010		Miscellaneous Housing/Dining Fees	Using meal card that is not yours	10.00 plus meal 7/1/1994
44010		Miscellaneous Housing/Dining Fees	Western Card Replacement	8.00 7/1/2002
44010		Room & Board Rates	Birnam Wood Apt-Double Room: 2 Students in each room	2,328.00 7/1/2006
44010		Room & Board Rates	Birnam Wood Apt-Family Rate: Whole apartment	9,312.00 7/1/2006
44010		Room & Board Rates	Birnam Wood Apt-Super Single: 1 student in each room	4,656.00 7/1/2006
44010		Room & Board Rates	Residence Halls: Triple Room w/ Gold Meal Plan	5,868.00 7/1/2006
44010		Room & Board Rates	Residence Halls-Double Room w/ Platinum Meal Plan	7,157.00 7/1/2006

2006 - 2007

Service Fees

Fund	Department	Description	2006 - 07 Fee	Last Date Changed
44010	Housing & Dining	Room & Board Rates Residence Halls-Double Room w/ Bronze/10 Meal Plan	6,477.00	7/1/2006
44010		Room & Board Rates Residence Halls-Double Room w/ Gold Meal Plan	6,785.00	7/1/2006
44010		Room & Board Rates Residence Halls-Double Room w/ Silver/15 Meal Plan	6,681.00	7/1/2006
44010		Room & Board Rates Residence Halls-Single Room w/ Platinum Meal Plan	7,910.00	7/1/2006
44010		Room & Board Rates Residence Halls-Single Room w/ Bronze/10 Meal Plan	7,230.00	7/1/2006
44010		Room & Board Rates Residence Halls-Single Room w/ Gold Meal Plan	7,538.00	7/1/2006
44010		Room & Board Rates Residence Halls-Single Room w/ Silver/15 Meal Plan	7,434.00	7/1/2006
44010		Room & Board Rates Residence Halls-Super Single Room w/ Platinum Meal Plan	8,341.00	7/1/2006
44010		Room & Board Rates Residence Halls-Super Single Room w/ Bronze/10 Meal Plan	7,661.00	7/1/2006
44010		Room & Board Rates Residence Halls-Super Single Room w/ Gold Meal Plan	7,968.00	7/1/2006
44010		Room & Board Rates Residence Halls-Super Single Room w/ Silver/15 Meal Plan	7,864.00	7/1/2006
44010		Room & Board Rates Residence Halls-Triple Room w/ Bronze/10 Meal Plan	5,560.00	7/1/2006
44010		Room & Board Rates Residence Halls-Triple Room w/ Platinum Meal Plan	6,240.00	7/1/2006
44010		Room & Board Rates Residence Halls-Triple Room w/ Silver/15 Meal Plan	5,764.00	7/1/2006
20077	Huxley College	Aerial Photograph search & retrieval	Variable	7/1/2005
20077		Search and Retrieval Fees for Aerial Photography - External Patrons	Variable	7/1/2005
23054		Alkalinity-Public	10.00	7/1/2002
23054		Alkalinity-WWU Activities	1.00	7/1/2002
23054		Ammonia(Sample run up to 40 samples)-WWU Activities	20.00	7/1/2002
23054		Ammonia-Public	20.00	7/1/2002
23054		Biological Oxygen Demand-Public	40.00	7/1/2002
23054		Ca-Mg Hardness (calculation)-Public	2.50	7/1/2002
23054		Chemical Oxygen Demand-Public	25.00	7/1/2002
23054		Chloride-Public	10.00	7/1/2002
23054		Chloride-WWU Activities	2.00	7/1/2002
23054		Chlorophyll (Fluorometric method)-Public	25.00	7/1/2002
23054		Chlorophyll (Fluorometric method)-WWU Activities	2.00	7/1/2002
23054		Chlorophyll (Spectrophotometric method)-Public	25.00	7/1/2002
23054		Chlorophyll (Spectrophotometric method)-WWU Activities	2.00	7/1/2002
23054		Dissolved Inorganic Carbon-Public	10.00	7/1/2002
23054		Dissolved Inorganic Carbon-WWU Activities	2.00	7/1/2002
23054		Dissolved Oxygen (D.O. probe)-Public	8.00	7/1/2002

2006 - 2007

Service Fees

Fund	Department	Description	2006 - 07 Fee	Last Date Changed
23054	Huxley College	Dissolved Oxygen (D.O. probe)-WWU Activities	1.00	7/1/2002
23054		Dissolved Oxygen (Winkler)-Public	10.00	7/1/2002
23054		Dissolved Oxygen (Winkler)-WWU Activities	2.00	7/1/2002
23054		Fluoride-Public	10.00	7/1/2002
23054		Fluoride-WWU Activities	2.00	7/1/2002
23054		Hardness- WWU Activities	1.00	7/1/2002
23054		Hardness-Public	13.00	7/1/2002
23054		Metals-Aluminum; \$8.00 for each additional-Public	15.00	7/1/2002
23054		Metals-Arsenic; \$8.00 for each additional-Public	15.00	7/1/2002
23054		Metals-Cadmium; \$8.00 for each additional-Public	15.00	7/1/2002
23054		Metals-Calcium;\$8.00 for each additional-Public	15.00	7/1/2002
23054		Metals-Chromium; \$8.00 for each additional-Public	15.00	7/1/2002
23054		Metals-Copper (EPA 220.2) (5 ug/L); \$8.00 for each additional-Public	15.00	7/1/2002
23054		Metals-Iron; \$8.00 for each additional-Public	15.00	7/1/2002
23054		Metals-Lead-; \$8.00 for each additional-Public	15.00	7/1/2002
23054		Metals-Magnesium- \$8.00 for each additional-Public	15.00	7/1/2002
23054		Metals-Manganese-\$8.00 for each additional-Public	15.00	7/1/2002
23054		Metals-Mercury-Public	25.00	7/1/2002
23054		Metals-Nickel-\$8.00 for each additional-Public	15.00	7/1/2002
23054		Metals-Potassium: \$8.00 for each additional-Public	15.00	7/1/2002
23054		Metals-Sodium: \$8.00 for each additional-Public	15.00	7/1/2002
23054		Metals-Tin: \$8.00 for each additional-Public	15.00	7/1/2002
23054		Metals-Zinc: \$8.00 for each additional-Public	15.00	7/1/2002
23054		Nitrate (Sample run up to 40 samples)-WWU Activities	20.00 each sample run	7/1/2002
23054		Nitrate + Nitrite (Sample run up to 40 samples)-WWU Activities	20.00 each sample run	7/1/2002
23054		Nitrate + Nitrite-Public	25.00	7/1/2002
23054		Nitrate-Public	17.00	7/1/2002
23054		pH-Public	20.00	7/1/2002
23054		pH-WWU Activities	2.00	7/1/2002
23054		Settleable Solids-Public	13.00	7/1/2002
23054		Settleable Solids-WWU Activities	2.00	7/1/2002
23054		Silicate: Sample run up to 40 samples-WWU Activities	20.00 each sample run	7/1/2002

Fund	Department	Description	2006 - 07 Fee	Last Date Changed
23054	Huxley College	Silicate-Public	15.00	7/1/2002
23054		Sol. Reactive Phosphorus (Sample run up to 40 samples)- WWU Activities	20.00 each sample run	7/1/2002
23054		Sol. Reactive Phosphorus-Public	17.00	7/1/2002
23054		Specific Conductance: Cost is for pH, specific conductance and turbidity-Public	Variable	7/1/2002
23054		Specific Conductance: Cost is for pH, specific conductance and turbidity-WWU Activities	Variable	7/1/2002
23054		T. Dissolved Solids (calculation)-Public	2.50	7/1/2002
23054		T. Dissolved Solids-Public	13.00	7/1/2002
23054		T. Dissolved Solids-WWU Activities	2.00	7/1/2002
23054		T. Nitrogen (Sample run up to 40 samples)-WWU Activities	20.00 each sample run	7/1/2002
23054		T. Nitrogen-Public	30.00	7/1/2002
23054		T. Organic Carbon-Public	35.00	7/1/2002
23054		T. Organic Carbon-WWU Activities	2.00	7/1/2002
23054		T. Phosphorus (Sample run up to 40 samples)-WWU Activities	20.00 each sample run	7/1/2002
23054		T. Phosphorus-Public	25.00	7/1/2002
23054		T. Susp. Solids-Public	13.00	7/1/2002
23054		T. Susp. Solids-WWU Activities	2.00	7/1/2002
23054		T.Solids-Public	13.00	7/1/2002
23054		T.Solids-WWU Activities	2.00	7/1/2002
23054		Turbidity; Cost is for pH, specific conductance and turbidity- Public	Variable	7/1/2002
23054		Turbidity; Cost is for pH, specific conductance and turbidity- WWU Activities	Variable	7/1/2002
23265		Alkalinity-Public	10.00	7/1/2006
23265		Ammonia-Public	20.00	7/1/2006
23265		Biological oxygen demand-Public	40.00	7/1/2006
23265		Ca-Mg Hardness (calculation)-Public	2.50	7/1/2006
23265		Chemical oxygen demand-Public	25.00	7/1/2006
23265		Chloride-Public	10.00	7/1/2006
23265		Chlorophyll (fluorometric method)-Public	25.00	7/1/2006
23265		Chlorophyll (spectrophotometric method)-Public	25.00	7/1/2006
23265		Dissolved inorganic carbon-Public	10.00	7/1/2006
23265		Dissolved oxygen (D.O. probe)- Public	8.00	7/1/2006
23265		Dissolved oxygen (Winkler)-Public	10.00	7/1/2006
23265		Fluoride-Public	10.00	7/1/2006

Fund	Department	Description	2006 - 07 Fee	Last Date Changed
23265	Huxley College	Hardness-Public	13.00	7/1/2006
23265		Metals-aluminum; \$8.00 for each additional-Public	15.00	7/1/2006
23265		Metals-arsenic; \$8.00 for each additional-Public	15.00	7/1/2006
23265		Metals-cadmium; \$8.00 for each additional-Public	15.00	7/1/2006
23265		Metals-calcium; \$8.00 for each additional-Public	15.00	7/1/2006
23265		Metals-chromium; \$8.00 for each additional-Public	15.00	7/1/2006
23265		Metals-copper; \$8.00 for each additional-Public	15.00	7/1/2006
23265		Metals-iron; \$8.00 for each additional-Public	15.00	7/1/2006
23265		Metals-lead; \$8.00 for each additional-Public	15.00	7/1/2006
23265		Metals-magnesium; \$8.00 for each additional-Public	15.00	7/1/2006
23265		Metals-manganese; \$8.00 for each additional-Public	15.00	7/1/2006
23265		Metals-mercury-Public	25.00	7/1/2006
23265		Metals-nickel; \$8.00 for each additional-Public	15.00	7/1/2006
23265		Metals-potassium; \$8.00 for each additional-Public	15.00	7/1/2006
23265		Metals-sodium; \$8.00 for each additional-Public	15.00	7/1/2006
23265		Metals-tin; \$8.00 for each additional-Public	15.00	7/1/2006
23265		Metals-zinc; \$8.00 for each additional-Public	15.00	7/1/2006
23265		Nitrate + Nitrite-Public	25.00	7/1/2006
23265		Nitrate-Public	17.00	7/1/2006
23265		pH-Public	20.00	7/1/2006
23265		Settleable solids-Public	13.00	7/1/2006
23265		Silicate-Public	15.00	7/1/2006
23265		Sol. Reactive Phosphorus-Public	17.00	7/1/2006
23265		Specific conductance; Cost is for pH, specific conductance and turbidity-Public	Variable	7/1/2006
23265		T. dissolved solids (calculation)-Public	2.50	7/1/2006
23265		T. dissolved solids-Public	13.00	7/1/2006
23265		T. nitrogen-Public	30.00	7/1/2006
23265		T. organic carbon-Public	35.00	7/1/2006
23265		T. phosphorus-Public	25.00	7/1/2006
23265		T. solids-Public	13.00	7/1/2006
23265		T. susp. solids-Public	13.00	7/1/2006
23265		Turbidity; Cost is for pH, specific conductance and turbidity-Public	Variable	7/1/2006

Fund	Department	Description	2006 - 07 Fee	Last Date Changed
24012	Instrument Center	Design & Manufacturing-Off Campus	45.00 per hour	7/1/2003
24012		Instrumental Consulting Svcs-Off Campus	45.00 per hour	7/1/2003
24012		Sample Analysis	Variable	7/1/2003
23063	Interlibrary Loans	Book-Billed: OCLC-IFM	5.00	7/1/2000
23063		Book-Billed: WWU	7.50	7/1/2000
23063		Journal Article-Billed: OCLC-IFM	10.00	7/1/2000
23063		Journal Article-Billed: WWU	15.00	7/1/2000
24065	Large Format Printer	For departmental use of CST's large format printer: Outside Patrons	2.50 per sq. foot	7/1/2005
24065		For departmental use of CST's large format printer: WWU Patrons	1.50 per sq.foot	7/1/2005
23240	Library	B/W Print from Existing Negative 11x14	14.00	7/1/2002
23240		B/W Print from Existing Negative 5x7	7.25	7/1/2002
23240		B/W Print from Existing Negative 8x10	9.25	7/1/2002
23240		B/W Print Requiring Copy Negative (WWU Retains Negative) 11x14	24.50	7/1/2002
23240		B/W Print Requiring Copy Negative (WWU Retains Negative) 5x7	17.75	7/1/2002
23240		B/W Print Requiring Copy Negative (WWU Retains Negative) 8x10	19.75	7/1/2002
23240		Color Print from Existing Negative 11x14	23.00	7/1/2002
23240		Color Print from Existing Negative 5x7	12.50	7/1/2002
23240		Color Print from Existing Negative 8x10	15.75	7/1/2002
23240		Color Print from Existing Negative 8x12	18.00	7/1/2002
23240		Color Print Requiring Copy Negative (WWU Retains Negative) 11x14	44.50	7/1/2002
23240		Color Print Requiring Copy Negative (WWU Retains Negative) 5x7	33.50	7/1/2002
23240		Color Print Requiring Copy Negative (WWU Retains Negative) 8x10	34.50	7/1/2002
23240		Color Print Requiring Copy Negative (WWU Retains Negative) 8x12	39.50	7/1/2002
23240		Delivered on CD-ROM or floppy disk (fee reduced by 1/2 if requestor supplies delivery media)	5.00	7/1/2002
23240		Digital Image Files TIFF or JPEG-Commercial	25.00	7/1/2002
23240		Digital Image Files TIFF or JPEG-Personal/Non-Profit	15.00	7/1/2002
23240		Digital Image Files TIFF or JPEG-WWU	10.00	7/1/2002
23240		Shipping/Handling (U.S.)-Commercial	15.00	7/1/2002
23240		Shipping/Handling (U.S.)-Personal/Non-Profit	10.00	7/1/2002
24066	Map Library STF Equipment/Personnel	Cover expenses of STF equip: External patrons - WWU	2.50 per sq. foot	7/1/2005
24066		Cover expenses of STF equip: Printing - WWU and External Patrons	0.25 per 11x17 color print	7/1/2005
24066		Cover expenses of STF equip: Printing - WWU Patrons	1.50 per sq. foot	7/1/2005

Fund	Department	Description	2006 - 07 Fee	Last Date Changed
24066	Map Library STF Equipment/Personnel	Cover expenses of STF equip: Scans - External Patrons	5.00 per set up	7/1/2005
24066		Cover expenses of STF equip: Scans - WWU Patrons	First free, additional scans \$2	7/1/2005
23262	Mature Adult Training Program	Mature Adult Training Program	40.00 per quarter	7/1/2005
45032	Music - Jazz	Instrumental Rental	30.00	7/1/1997
45034	Music - Orchestra	Inst Rental - Pedagogy	5.00	7/1/1997
45034		Inst Rental - Primary	30.00	7/1/1997
45031	Music - Wind	Inst Rental - Pedagogy	5.00	7/1/1997
45031		Inst Rental - Primary	20.00	7/1/1997
23121	Music Repair	Piano Practice Fee	15.00	7/1/1993
23173	New Student Services	Parent Fee Per Person-One Day	35.00	7/1/2001
23173		Parent Fee Per Person-Overnight, Housing and Dinner/Breakfast	75.00	7/1/2005
23230	PEHR	Consultations/Workshops-Community Class	Variable	7/1/2002
23230		Consultations/Workshops-Community Talks	Variable	7/1/2002
23230		Consultations/Workshops-Half day workshops for teams and groups	Variable	7/1/2002
23230		Consultations/Workshops-Individual Consultations	Variable	7/1/2002
23230		Consultations/Workshops-Team Workshops	Variable	7/1/2002
23230		Materials-Dr. Vernacchia's "Coaching Mental Excellence"	Variable	7/1/2002
23230		Technical Services-Concentration Tapes	Variable	7/1/2002
23230		Technical Services-Relaxation and visualization CD's	Variable	7/1/2002
23230		Technical Services-Video Tapes	Variable	7/1/2002
23019	Physical Education	Fitness Evaluation Fee	Variable	7/1/1991
24001		Annual Fee - Faculty/Staff Locker Fees	20.00	7/1/2004
24001		Quarterly Fee - Faculty/Staff Locker Fees	8.00	7/1/2004
24002		Annual Fee - Student Basket Fees	20.00	7/1/2004
24002		Quarterly Fee - Student Basket Fees	8.00	7/1/2004
23259	Planetarium	Admission to Planetarium Shows/Presentations: All others	5.00	7/1/2005
23259		Admission to Planetarium Shows/Presentations: WWU Students (free if show/presentation is for course)	3.00	7/1/2005
31030	Property Management/Rentals	Labor Union Office - Commissary Usage	240.00 per hr	7/1/1998
31030		Marine Center Residence	200.00 per month	7/1/1996
31030		NSEA - Hannagan Road	325.00 per month	7/1/1999
31030		Property Management Fee	7% per unit	7/1/2003
31030		Property Rental - 404 20th St	Market Value	7/1/2003

2006 - 2007

Service Fees

Fund	Department	Description	2006 - 07 Fee	Last Date Changed
31030	Property Management/Rentals	Property Rental - 408 20th St	Market Value	7/1/2003
31030		Property Rental - 914 24th Street	Market Value	7/1/2003
31030		Residential Property Rentals at Indian Terrace	Market Value	7/1/2003
31030		University Bookstore (Land Lease)	50.00 per month	7/1/1995
21005	Psychology	Key Deposit	10.00	7/1/2002
23074	Registrar	Interest charge on all past due balances-split w/Housing,Registrar, cashier	1%	7/1/2002
23074		Late Add Fee-split w/Housing, Registrar, Cashier	10.00 per credit	7/1/2002
23074		Late payment fee on balances of \$500 or more after first 15th quarter-split w/Housing,Registrar, Cashier	75.00 per quarter	7/1/2002
15110	Registrar-Commencement	Baccalaureate Degree Application Fee	35.00	7/1/2001
15110		Masters Degree Application Fee	35.00	7/1/2001
15110		Placement Service Fee	2.00	7/1/1995
23076	Registrar-Transcript Service	Official Transcript Fee	7.00	7/1/2006
24010	Risk Management	Field Trip Optional Insurance-per student, per day	0.75	7/2/1996
24010		Optional Hazardous Material Insurance	2.00	7/1/2003
24048		Optional Student Medical Malpractice Insurance	20.00 Annual	7/2/1996
23223	SMATE	SMATE Community Cards	70.00 per year	7/1/2003
23223		SMATE Resource Center Late Fee, Books	0.50 per day	7/1/2003
23223		SMATE Resource Center Late Fee, Equipment	1.30 per day	7/1/2003
23223		SMATE School District Cards	200.00 per year	7/1/2003
23223		SMATE Student Cards (Non-WWU Students)	8.00 per quarter	7/1/2003
23224		12" Laminator	1.00 per foot	7/1/2000
23224		27" Laminator	2.50 per foot	7/1/2000
23224		Davis Projector (portable)-Limited Public	40.00 per day	7/1/1999
23224		Davis Projector (portable)-University Related	20.00 per day	7/1/1999
23224		High Tech Media Lab	Variable	7/1/1999
23224		Labor, Staff	33.00 per hour	7/1/2001
23224		Labor, Student	10.00 per hour	7/1/2005
23224		Laptop Usage, non-university	20.00 per day	7/1/2005
23224		SL 210, Secondary Ed. Classroom	Variable	7/1/1999
23224		SL 220, Learning Resource Center	Variable	7/1/1999
23224		SL 230, Elementary Classroom	Variable	7/1/1999
23224		SL 240, Enhanced Computer Classroom	Variable	7/1/1999

2006 - 2007

Service Fees

Fund	Department	Description	2006 - 07 Fee	Last Date Changed
23224	SMATE	Star Lab-Limited Public	50.00 per day	7/1/1999
23224		Star Lab-University Related	15.00 per day	7/1/1999
23224		Survey Equipment-Limited Public	50.00 per day	7/1/1999
23224		Survey Equipment-University Related	15.00 per day	7/1/1999
23224		Telescopes-Limited Public	50.00 per day	7/1/1999
23224		Telescopes-University Related	15.00 per day	7/1/1999
23051	Speech/Hearing	Acoustic reflex decay testing	10.00	7/1/2003
23051		Acoustic reflex testing	15.00	7/1/1998
23051		Air & Bone Thresholds	25.00	7/1/2003
23051		Assistive Technology Evaluation	200.00	7/1/2003
23051		Auditory evoked potentials	225.00	7/1/2003
23051		Aural Rehab following cochlear implant	39.50	7/1/2005
23051		Aural Rehab/individual	39.50 per hour	7/1/2005
23051		Bellingham Public Schools testing at WWU	60.00	7/1/1998
23051		Caloric vestibular test w/recording	35.00	7/2/1996
23051		Central auditory function testing	200.00	7/1/2003
23051		Comprehensive audiometry threshold	90.00	7/1/2003
23051		Comprehensive Diag Otoacoustic Emissions	75.00	7/1/1999
23051		Conditioning play audiometry	90.00	7/1/2003
23051		Consultation	25.00 per 1/4 hour	7/1/2003
23051		Ear mold for BTE aid	50.00	7/1/2002
23051		Ear protector attenuation measurements	25.00	7/1/1998
23051		Education Program	15.00	7/1/1997
23051		Electro acoustic evaluation for hearing aid; binaural	30.00	7/1/1997
23051		Electro acoustic evaluation for hearing aid; monaural	20.00	7/1/1998
23051		Electrocochleography	175.00	7/1/1998
23051		Evoked otacoustic emissions (transient screening)	25.00	7/2/1996
23051		Filtered speech test	50.00	7/1/1997
23051		Group Aural Rehab Therapy	19.50 per session	7/1/2005
23051		Group Hearing Tests 0-49	50.00	7/1/1997
23051		Group Hearing Tests 200-399	350.00	7/1/1997
23051		Group Hearing Tests 50-199	150.00	7/1/1997

Fund	Department	Description	2006 - 07 Fee	Last Date Changed
23051	Speech/Hearing	Group Speech/Language Therapy	15.00 per session	7/1/2003
23051		HAE; binaural	80.00	7/1/2003
23051		Hearing aid check; binaural	60.00	7/1/2003
23051		Hearing aid check; monaural	50.00	7/1/2003
23051		Hearing Aid Examination & selection; monaural	60.00	7/1/2002
23051		Hearing evaluation Senior Center	15.00	7/1/2002
23051		Individual Speech/Language Therapy	39.50 per session	7/1/2005
23051		ITE impression (ear mold)	15.00	7/1/1998
23051		Loudness balance test, alternate binaural or monaural	20.00	7/1/1998
23051		Off site prep charge for replacement casting	30.00	7/1/1998
23051		On site aid check/cleaning	20.00	7/1/2003
23051		Opt kinetic nystagmus test, w/ recording	40.00	7/1/2002
23051		Positional nystagmus test, w/ recording	40.00	7/1/2002
23051		Pure Tone audiometry (threshold); air only	15.00	7/1/1997
23051		Pure Tone screening	15.00	7/1/1990
23051		Retubing-per ear, not covered by warranty	5.00	7/1/1997
23051		Screening pure tone (air only)	15.00	7/1/1990
23051		Select picture audiometry	50.00	7/1/1998
23051		Short increment sensitivity index	20.00	7/1/1998
23051		Sound level measurement	25.00	7/1/1997
23051		Speech audiometry; threshold	20.00	7/1/1997
23051		Speech audiometry; with speech recognition	40.00	7/1/1997
23051		Speech/Language DX	99.50	7/1/2005
23051		Speech/Language Re-evaluation	54.50	7/1/2005
23051		Spontaneous nystagmus w/recording	40.00	7/1/2002
23051		Staggered spondaic word test	50.00	7/2/1996
23051		Stenger test, pure tone	20.00	7/1/1998
23051		Stenger test, speech	20.00	7/1/1998
23051		Synthetic sentence identification test	50.00	7/1/1997
23051		Threshold Retest for standard	65.00	7/1/1997
23051		Tinnitus evaluation	60.00	7/1/2003
23051		Tone Decay Test	15.00	7/1/1998

2006 - 2007

Service Fees

Fund	Department	Description	2006 - 07 Fee	Last Date Changed
23051	Speech/Hearing	Tympanometry	20.00	7/1/2003
23051		Ventical electrode use	5.00	7/1/2005
23051		Visual Reinforcement Audiometry (VRA)	85.00	7/1/2002
23051		Xerox Copies of Client Report	18.00	7/1/2003
24014	SPMC	Boat Rent , Anova, Fauna, Flora	110.00 per hour	7/1/2002
24014		Boat Rental, Outboards	22.00 per hr	7/1/2002
24014		CHN Analyzer Sample Fee	15.00 per sample	7/1/2003
24014		Classroom Lab Use 1/2 day Day/Wk/Mo	\$40/\$80/\$256	7/1/2002
24014		Classroom Lab Use Full Day Day/Wk/Mo	\$75/\$250/\$460	7/1/2002
24014		Classroom Use	45.00 per day	7/1/2002
24014		Consortium Fee (Annual)	1,000.00 per institution	7/1/1991
24014		Housing Fee	44.00 per week	7/1/2002
24014		NCASI Fee (annual rental)	5,750.00	7/1/1998
24014		Other Lab Use Per Day/Wk/Mo	\$5/\$35/\$120	7/1/2002
24014		Research Lab Use Per Day/Wk/Mo	\$11/\$75/\$295	7/1/2002
23253	Student Affairs	Enrollment and Orientation Fee	250.00	7/1/2003
23079	Student Affairs Division Conference	Conference Fee Per Participant	45.00	7/1/2001
45401	Student Recreation Center	Bod Pod Evaluation 2 or more participants - Members Rate	15.00 per person	7/1/2004
45401		Bod Pod Evaluation 2 or more participants - Non-Member Rate	35.00 per person	7/1/2004
45401		Bod Pod Evaluation 2 or more participants - University Faculty/Staff Non-member Rate	30.00 per person	7/1/2004
45401		Bod Pod Evaluation Member Rate	20.00	7/1/2004
45401		Bod Pod Evaluation Non-Member Rate	40.00	7/1/2004
45401		Bod Pod Evaluation University Faculty/Staff Non-Member Rate	35.00	7/1/2004
45401		Climbing Wall Belay Test - Member Rate	10.00	7/1/2004
45401		Climbing Wall Classes three sessions - Member Rate	25.00	7/1/2004
45401		Climbing Wall Kid's Class three sessions - Member Rate	25.00	7/1/2004
45401		Climbing Wall Kids Summer Programming - Member Rate	90.00 per week	7/1/2004
45401		Climbing Wall Kids Summer Programming - Non-Member Rate	115.00 per week	7/1/2004
45401		Climbing Wall Lead Test - Member Rate	5.00	7/1/2004
45401		Climbing Wall Rental: 10 participants (Members)	90.00 per hour	7/1/2004
45401		Climbing Wall Rental: 10 participants (Non-Members)	150.00 per hour	7/1/2004
45401		Climbing Wall Rental: 10 participants (University Affiliate Non-Member)	110.00 per hour	7/1/2004

Fund	Department	Description	2006 - 07 Fee	Last Date Changed	
45401	Student Recreation Center	Climbing Wall	Rental: 11-21 (University Affiliate Non-member)	5.00 per person above \$110/hr	7/1/2004
45401		Climbing Wall	Rental: 11-21 participants (Members)	5.00 per person above \$90/hr base	7/1/2004
45401		Climbing Wall	Rental: 11-21 participants (Non-members)	5.00 per person above \$150/hr	7/1/2004
45401		Climbing Wall	Women's Climb - Member Rate	4.00	7/1/2004
45401		Conference Room	Room Rental: Non-Member Rate	250.00 per day	7/1/2003
45401		Conference Room	Room Rental: Non-Member Rate	50.00 per hour	7/1/2003
45401		Day Pass	Punch Card - 15 Days: University Affiliate Non-Member Rate	95.00	7/1/2004
45401		Day Pass	Punch Card - 5 Days: University Affiliate Non-Member Rate	32.00	7/1/2004
45401		Equipment	Lost/Stolen: Basketball	40.00	7/1/2004
45401		Equipment	Lost/Stolen: Floor Hockey Puck	2.00	7/1/2004
45401		Equipment	Lost/Stolen: Flying Disc, Jump Rope or Floor Hockey Stick	10.00	7/1/2004
45401		Equipment	Lost/Stolen: Lock	25.00	7/1/2004
45401		Equipment	Lost/Stolen: Outdoor Volleyball Net and Volleyball	150.00	7/1/2004
45401		Equipment	Lost/Stolen: Soccer Ball, Tennis Racquet or Softball Glove	35.00	7/1/2004
45401		Equipment	Lost/Stolen: Speed Bag	40.00	7/1/2004
45401		Equipment	Lost/Stolen: Table Tennis Net or Badminton Racket	15.00	7/1/2004
45401		Equipment	Lost/Stolen: Table Tennis Paddle	5.00	7/1/2004
45401		Equipment	Lost/Stolen: Volleyball or Football	30.00	7/1/2004
45401		Equipment	Lost/Stolen: Weight Belt	45.00	7/1/2004
45401		Equipment	Lost/Stolen: Weight Lifting Straps	6.00 pair	7/1/2004
45401		Fitness Classes	1 hour a week (9 weeks) - University Affiliate Non-Member Rate	35.00 per quarter	7/1/2004
45401		Fitness Classes	1 hour a week (9 weeks) - Member Rate	20.00 per quarter	7/1/2004
45401		Fitness Classes	2 hours a week (9 weeks) - Member Rate	25.00 per quarter	7/1/2004
45401		Fitness Classes	2 hours a week (9 weeks) - University Affiliate Non-Member Rate	45.00 per quarter	7/1/2004
45401		Fitness Classes	3 hours a week (9 weeks) - Member Rate	30.00 per quarter	7/1/2004
45401		Fitness Classes	3 hours a week (9 weeks) - University Affiliate Non-Member Rate	50.00 per quarter	7/1/2004
45401		Fitness Classes	Drop in Cards - 1 class - Member Rate	5.00	7/1/2004
45401		Fitness Classes	Drop in Cards - 12 classes - Member Rate	36.00	7/1/2004
45401		Fitness Classes	Drop in Cards - 5 classes - Member Rate	15.00	7/1/2004
45401		Fitness Classes	Drop in Cards - 9 classes - Member Rate	27.00	7/1/2004
45401		Fitness Classes	Specialty Classes: 1 hour a week (9 weeks) - Member Rate	30.00 per quarter	7/1/2004
45401		Fitness Classes	Specialty Classes: 1 hour a week (9 weeks) - University Affiliate Non-Member Rate	40.00 per quarter	7/1/2004

Fund	Department	Description	2006 - 07 Fee	Last Date Changed
45401	Student Recreation Center	Fitness Classes	Specialty Classes: 2 hours a week (9 weeks) - Member Rate	40.00 per quarter 7/1/2004
45401		Fitness Classes	Specialty Classes: 2 hours a week (9 weeks) - University Affiliate Non-Member Rate	55.00 per quarter 7/1/2004
45401		Fitness Classes	Specialty Classes: 3 hours a week (9 weeks) - Member Rate	50.00 per quarter 7/1/2004
45401		Fitness Classes	Specialty Classes: 3 hours a week (9 weeks) - University Affiliate Non-Member Rate	65.00 per quarter 7/1/2004
45401		General Fitness Assessment	Member Rate	25.00 7/1/2004
45401		General Fitness Assessment	With Bod Pod, Member Rate	30.00 7/1/2004
45401		Group Exercise Rooms	Room Rental: Member Rate	25.00 per hour 7/1/2003
45401		Group Exercise Rooms	Room Rental: Member Rate	100.00 per day 7/1/2003
45401		Group Exercise Rooms	Room Rental: Non-Member Rate	300.00 per day 7/1/2003
45401		Group Exercise Rooms	Room Rental: Non-Member Rate	75.00 per hour 7/1/2003
45401		Group Exercise Rooms	Room Rental: University Affiliate Non-member Rate	50.00 per hour 7/1/2003
45401		Group Exercise Rooms	Room Rental: University Affiliate Non-member Rate	200.00 per day 7/1/2003
45401		Guest Pass	Adult	7.00 per visit 7/1/2004
45401		Guest Pass	Child 12 years and under	3.00 per visit 7/1/2004
45401		Guest Pass	Youth 13-17 years old	4.50 per visit 7/1/2004
45401		Gym	Rental: (3 courts)-Member Rate	90.00 per hour 7/1/2003
45401		Gym	Rental: (3 courts)-Member Rate	300.00 per day 7/1/2003
45401		Gym	Rental: (3 courts)-Non-Member Rate	900.00 per day 7/1/2003
45401		Gym	Rental: (3 courts)-Non-Member Rate	270.00 per hour 7/1/2003
45401		Gym	Rental: (3 courts)-University Affiliate Non-member Rate	150.00 per hour 7/1/2003
45401		Gym	Rental: (3 courts)-University Affiliate Non-member Rate	500.00 per day 7/1/2003
45401		Gym	Rental: (per court)-Member Rate	30.00 per hour 7/1/2003
45401		Gym	Rental: (per court)-Member Rate	150.00 per day 1/0/1900
45401		Gym	Rental: (per court)-Non-Member Rate	90.00 per hour 7/1/2003
45401		Gym	Rental: (per court)-Non-Member Rate	450.00 per day 1/0/1900
45401		Gym	Rental: (per court)-University Affiliate Non-member Rate	50.00 per hour 7/1/2003
45401		Gym	Rental: (per court)-University Affiliate Non-member Rate	250.00 per day 7/1/2003
45401		Indoor Track	Rental: Member	25.00 per hour 7/1/2004
45401		Indoor Track	Rental: Non-Member	75.00 per hour 7/1/2004
45401		Indoor Track	Rental: University Affiliate Non-Member	50.00 per hour 7/1/2004
45401		Kids Programming	Kids Night Out - Member Rate	10.00 per visit 7/1/2004
45401		Kids Programming	Kids Night Out - University Affiliate Non-Member Rate	12.50 per visit 7/1/2004

Fund	Department	Description	2006 - 07 Fee	Last Date Changed	
45401	Student Recreation Center	Kids Programming	Summer Camp - After Care	5.00 per week	7/1/2004
45401		Kids Programming	Summer Camp - Before Care	5.00 per week	7/1/2004
45401		Kids Programming	Summer Camp - Members & University Affiliate Non-Member Rate	150.00 per week	7/1/2004
45401		Kids Programming	Summer Camp - Non-Member Rate	175.00 per week	7/1/2004
45401		Kids Programming	Summer Camp - Optional Lunch	5.00 per day	7/1/2004
45401		Kids Programming	Summer Camp - Optional Swim Lesson	15.00	7/1/2004
45401		Locker Rental	1/2 Z Type - Member Rate	45.00 per annual year	7/1/2004
45401		Locker Rental	1/2 Z Type - Member Rate	20.00 per quarter	7/1/2004
45401		Locker Rental	1/3 Size - Member Rate	15.00 per quarter	7/1/2004
45401		Locker Rental	1/3 Size - Member Rate	30.00 per annual year	7/1/2004
45401		Locker Rental	1/4 Size - Member Rate	25.00 per annual year	7/1/2004
45401		Locker Rental	1/4 Size - Member Rate	10.00 per quarter	7/1/2004
45401		Massage	Chair, 20 minutes	20.00	7/1/2005
45401		Massage	Massage - Broken Appointment	15.00	7/1/2006
45401		Massage	Table, 30 minutes	30.00	7/1/2005
45401		Massage	Table, 60 minutes	45.00	7/1/2005
45401		Massage	Table, 90 minutes	65.00	7/1/2006
45401		Membership Rates	Faculty/Staff/Retirees-Lou Parberry Membership	70.00 per quarter + tax	7/1/2004
45401		Membership Rates	Spouse/Dependents/Domestic Partners (per person) of current student, faculty or staff	311.00 Per academic year + tax	7/1/2006
45401		Membership Rates	Spouse/Dependents/Domestic Partners (per person) of current student, faculty or staff	372.00 Per annual year + tax	7/1/2006
45401		Membership Rates	Spouse/Dependents/Domestic Partners (per person) of current student, faculty or staff	103.00 per quarter + tax	7/1/2006
45401		Membership Rates	WWU Alumni/Affiliate	472.00 per annual year + tax	7/1/2006
45401		Membership Rates	WWU Alumni/Affiliate	133.00 per quarter + tax	7/1/2006
45401		Membership Rates	WWU Alumni/Affiliate Spouse/Domestic Partner/Dependent	472.00 per annual year + tax	7/1/2006
45401		Membership Rates	WWU Faculty/Staff/Retirees	103.00 per quarter + tax	7/1/2006
45401		Membership Rates	WWU Faculty/Staff/Retirees	372.00 per annual year + tax	7/1/2006
45401		Membership Rates	WWU Faculty/Staff/Retirees	279.00 per academic year + tax	7/1/2006
45401		Membership Rates	WWU Students-Individual-Optional membership for students enrolled in less than 6 credits	279.00 per academic year	7/1/2006
45401		Membership Rates	WWU Students-Individual-Optional membership for students enrolled in less than 6 credits	372.00 per annual year	7/1/2006
45401		Membership Rates	WWU Students-Individual-Optional membership for students enrolled in less than 6 credits	93.00 per quarter	7/1/2006
45401		Multipurpose Activity Court (MAC)	Rental: Member Rate	250.00 per day	7/1/2003
45401		Multipurpose Activity Court (MAC)	Rental: Member Rate	50.00 per hour	7/1/2003

Fund	Department	Description	2006 - 07 Fee	Last Date Changed
45401	Student Recreation Center	Multipurpose Activity Court Rental: Non-Member Rate (MAC)	150.00 per hour	7/1/2003
45401		Multipurpose Activity Court Rental: Non-Member Rate (MAC)	750.00 per day	7/1/2003
45401		Multipurpose Activity Court Rental: University Affiliate Non-member Rate (MAC)	500.00 per day	7/1/2003
45401		Multipurpose Activity Court Rental: University Affiliate Non-member Rate (MAC)	100.00 per hour	7/1/2003
45401		Party Rentals 10 participants 1 hour pool and 1 hour climbing wall - Member Rate	125.00	7/1/2004
45401		Party Rentals 10 participants 1 hour pool and 1 hour climbing wall - Non-Member Rate	185.00	7/1/2004
45401		Party Rentals 10 participants 1 hour pool and 1 hour climbing wall - University Affiliate Non-Member Rate	150.00	7/1/2004
45401		Party Rentals 10+ participants	5.00 per person	7/1/2004
45401		Personal Training Instruction: 10 or more sessions - Member Rate	20.00 per session	7/1/2004
45401		Personal Training Instruction: 1-4 sessions - Member Rate	30.00 per session	7/1/2004
45401		Personal Training Instruction: 5-9 sessions - Member Rate	25.00 per session	7/1/2004
45401		Pool Equipment: Iceberg	25.00	7/1/2004
45401		Pool Leisure Area + 4 lanes: Member Rate	70.00 per hour	1/0/1900
45401		Pool Leisure Area + 4 lanes: Non-Member Rate	130.00 per hour	7/1/2003
45401		Pool Leisure Area + 4 lanes: University Affiliate Non-member Rate	90.00 per hour	1/0/1900
45401		Pool Leisure Area: Member Rate	30.00 per hour	7/1/2004
45401		Pool Leisure Area: Non-Member Rate	90.00 per hour	7/1/2004
45401		Pool Leisure Area: University Affiliate Non-Member Rate	50.00 per hour	7/1/2004
45401		Swimming Lessons Level 1-3: Eight, 30 minute lessons - Member Rate	35.00	7/1/2004
45401		Swimming Lessons Level 1-3: Eight, 30 minute lessons - Non-Member Rate	50.00	7/1/2004
45401		Swimming Lessons Level 4-6: Eight, 30 minute lessons - Member Rate	40.00	7/1/2004
45401		Swimming Lessons Level 4-6: Eight, 30 minute lessons - Non-Member Rate	55.00	7/1/2004
45401		Swimming Lessons Private: 30 minutes - Member Rate	10.00 per person	7/1/2004
45401		Swimming Lessons Private: 30 minutes - Non-Member Rate	15.00 per person	7/1/2004
45094	Summer Theatre-Even Year	Summer Theatre	\$6-\$14	7/1/2006
45095	Summer Theatre-Odd Year	Summer Theatre	\$6-\$14	7/1/2006
45025	Theatre	Tickets-Faculty directed program - General 3-4 Shows	\$6-\$12	7/1/2006
23241	Theatre Arts	Student Dir. Show Admission	\$3.00 - \$6.00	7/1/2006
23241		Student Musical Admission	\$4.00 - \$8.00	7/1/2006
33002	University Box Office	Season Ticket Fee Charge by Packet (subject to approval)	5.00 per packet	7/1/2006
33002		Order Fee Internet Order Fees per ticket order	variable	7/1/2005
33002		Service Charge Associated Students (subject to approval)	percent of ticket revenue collections	7/1/2006

Fund	Department	Description	2006 - 07 Fee	Last Date Changed
33002	University Box Office	Service Charge Athletics (subject to approval)	percent of ticket revenue collections	7/1/2006
33002		Service Charge College of Fine and Performing Arts (subject to approval)	percent of ticket revenue collections	7/1/2006
33002		Service Charge Other Departments (subject to approval)	percent of ticket revenue collections	7/1/2006
33002		Ticket Handling Fee Department Events - Free (subject to approval)	0.50 per ticket	7/1/2006
33002		Ticket Handling Fee Non-Western - Not For Profit (subject to approval)	1.00 per ticket	7/1/2006
33002		Ticket Handling Fee Non-Western Events	2.00 per ticket	7/1/2002
33002		Ticket Handling Fee Student Athletic Season Pass (subject to approval)	0.50 per pass	7/1/2006
44012	Viking Union	35 mm Projector w/carousel: Off-Campus	10.00	7/1/2005
44012		35 mm Projector w/carousel: On-Campus	30.00	7/1/2005
44012		8-channel Sound System: Off-Campus	100.00	7/1/2005
44012		Associated Students-Vehicle Usage-Equipment Trailer (OC use Only)	10.00	7/1/2000
44012		Associated Students-Vehicle Usage-Grand Am	WWU Motorpool Rates	7/1/2000
44012		Associated Students-Vehicle Usage-Outdoor Center Evening Use	5.00	7/1/2000
44012		Associated Students-Vehicle Usage-Outdoor Center Weekend (Friday-Sunday)	15.00	7/1/2000
44012		Associated Students-Vehicle Usage-Outdoor Center Weekly	20.00	7/1/2000
44012		Associated Students-Vehicle Usage-Van #2, Van #3 and Mini Van	WWU Motorpool Rates	7/1/2000
44012		Associated Students-Vehicle Usage-VU Truck (VU Operations use only)	WWU Motorpool Rates	7/1/2000
44012		Baby Grand Piano (all users)	60.00	7/1/2000
44012		Chairs - stacking (per day, each): Off-Campus	1.00	7/1/2000
44012		Concert System w/32 channels: Off-Campus	500.00	7/1/2005
44012		Genie Lift: Off-Campus	20.00	7/1/2000
44012		Liberty Sound System: Off-Campus	75.00	7/1/2005
44012		Liberty Sound System: On-Campus	10.00	7/1/2005
44012		Lighting: Follow Spot	20.00	7/1/2000
44012		Lighting: Light Trees	30.00	7/1/2005
44012		Lighting: Lighting System	100.00	7/1/2000
44012		Mid-Range Sound System w/16 channels: Off-Campus	275.00	7/1/2005
44012		Overhead Projector: Off-Campus	25.00	7/1/2005
44012		Overhead Projector: On-Campus	12.00	7/1/2005
44012		Portable Disco System w/CD & Cassette: Off-Campus	75.00	7/1/2000
44012		Portable Disco System w/CD & Cassette: On-Campus	12.00	7/1/2005
44012		Screen: Off-Campus	12.00	7/1/2005

2006 - 2007

Service Fees

Fund	Department	Description	2006 - 07 Fee	Last Date Changed
44012	Viking Union	Screen: On-Campus	5.00	7/1/2005
44012		Setup of Event: Off-Campus	18.00	7/1/2005
44012		Setup of Event: On-Campus	15.00	7/1/2005
44012		Staging (per 6'x 8' piece): Off-Campus	10.00	7/1/2005
44012		Student Organization: Setup of Event , per staff member	12.00 per hour	7/1/2005
44012		Student Organization: Technician required, per staff member	12.00 per hour	7/1/2005
44012		Tables - 6', folding legs (per day, each): Off-Campus	3.00	7/1/2000
44012		Technician required: Off-Campus	18.00	7/1/2005
44012		Technician required: On-Campus	15.00	7/1/2005
44012		VCR & Monitor: Off-Campus	40.00	7/1/2005
44012		VCR & Monitor: On-Campus	20.00	7/1/2005
44012		Waste Water Disposal	60.00 per quarter	7/1/2004
44012	Adventure Props	Rental: For-profit groups	100.00 per day	7/1/2000
44012	Adventure Props	Rental: Non-profit groups	50.00 per day	7/1/2000
44012	Adventure Props	Rental: University Groups	25.00 per day	7/1/2000
44012	Challenge Course	Challenge Course Facilitation	140.00 per facilitator	7/1/2000
44012	Challenge Course	For-profit groups (minimum fee \$250.00)	25.00 per person	7/1/2000
44012	Challenge Course	For-profit groups or individuals working w/non-profit clients (minimum fee 150.00)	15.00 per person	7/1/2000
44012	Challenge Course	Non-profit Groups (minimum fee \$100.00)	10.00 per person	7/1/2000
44012	Challenge Course	Special Services	35.00 per hour	7/1/2000
44012	Challenge Course	University Groups	5.00 per person	7/1/2000
44012	Child Development Center	Additional Charges: Late pick-up after 5:30 p.m. (add'l 10 min)	5.00	7/1/2000
44012	Child Development Center	Additional Charges: Late pick-up after 5:30 p.m. (first 10 min)	15.00	7/1/2000
44012	Child Development Center	Additional Charges: Missed parent hours & parent sub	9.00 per hour	7/1/2005
44012	Child Development Center	Household Based on USDA Sliding Fee Scale	3.18 per hour	7/1/2005
44012	Child Development Center	Household Based on USDA Sliding Fee Scale	3.92 per hour	7/1/2005
44012	Child Development Center	Household Based on USDA Sliding Fee Scale	4.56 per hour	7/1/2005
44012	Child Development Center	Non-students	4.56 per hour	7/1/2005
44012	Child Development Center	Registration Fee	65.00 per child	7/1/2004
44012	Lakewood Center	Lounge Rental: Non-University Groups (650 sq ft meeting space near Challenge Course)	35.00 per hour	7/1/2000
44012	Lakewood Center	Lounge Rental: University Groups (650 sq ft meeting space near Challenge Course)	No Charge	7/1/2000
44012	Lakewood Center	Sailing Lessons	40.00 Lesson Pkg	7/1/2000

Fund	Department	Description	2006 - 07 Fee	Last Date Changed
44012	Viking Union	Lakewood Center	Sailing Lessons	10.00 per hour 7/1/2000
44012		Lakewood Center	Watercraft Rental: Canoes, Kayaks, Rowboats (Alumni)	4.00 7/1/2005
44012		Lakewood Center	Watercraft Rental: Canoes, Kayaks, Rowboats (Faculty/Staff)	5.00 7/1/2005
44012		Lakewood Center	Watercraft Rental: Canoes, Kayaks, Rowboats (Students)	3.00 7/1/2005
44012		Lakewood Center	Watercraft Rental: Fixed Keel Sailboat (Alumni)	6.00 7/1/2005
44012		Lakewood Center	Watercraft Rental: Fixed Keel Sailboat (Faculty/Staff)	7.00 7/1/2005
44012		Lakewood Center	Watercraft Rental: Fixed Keel Sailboat (Students)	5.00 7/1/2005
44012		Lakewood Center	Watercraft Rental: Group Rate: Non-Affiliated	10.00 per boat 7/1/2000
44012		Lakewood Center	Watercraft Rental: Group Rate: University Affiliated & Non-Profit	5.00 per boat 7/1/2000
44012		Lakewood Center	Watercraft Rental: Lasers & Alphas (Alumni)	5.00 7/1/2005
44012		Lakewood Center	Watercraft Rental: Lasers & Alphas (Faculty/Staff)	6.00 7/1/2005
44012		Lakewood Center	Watercraft Rental: Lasers & Alphas (Students)	4.00 7/1/2005
44012		Lakewood Center	Watercraft Rental: Quarterly Rate (Alumni)	35.00 7/1/2000
44012		Lakewood Center	Watercraft Rental: Quarterly Rate (Faculty/Staff)	45.00 7/1/2000
44012		Lakewood Center	Watercraft Rental: Quarterly Rate (Students)	20.00 7/1/2000
44012		Lakewood Center	Watercraft Rental: Windsurfers (Alumni)	4.00 7/1/2005
44012		Lakewood Center	Watercraft Rental: Windsurfers (Faculty/Staff)	5.00 7/1/2005
44012		Lakewood Center	Watercraft Rental: Windsurfers (Students)	3.00 7/1/2005
44012		Outdoor Center	Bicycle Accessories: Panniers	3.50 per day 7/1/2000
44012		Outdoor Center	Bicycle Accessories: Panniers	7.50 per weekend 7/1/2000
44012		Outdoor Center	Bicycle Accessories: Rear Pack	4.50 per weekend 7/1/2005
44012		Outdoor Center	Bicycle Accessories: Rear Pack	2.00 per day 7/1/2000
44012		Outdoor Center	Individual Equipment: Climbing Skins	3.00 per day 7/1/2005
44012		Outdoor Center	Individual Equipment: Climbing Skins	6.50 per weekend 7/1/2005
44012		Outdoor Center	Individual Equipment: Mountain Bike	12.00 per day 7/1/2005
44012		Outdoor Center	Individual Equipment: Mountain Bike	27.00 per weekend 7/1/2005
44012		Outdoor Center	Individual Equipment: Poles	2.25 per weekend 7/1/2005
44012		Outdoor Center	Individual Equipment: Poles	1.00 per day 7/1/2005
44012		Outdoor Center	Individual Equipment: Snowboard	22.50 per weekend 7/1/2005
44012		Outdoor Center	Individual Equipment: Snowboard	10.00 per day 7/1/2005
44012		Outdoor Center	Individual Equipment: Snowboard Boots	18.00 per weekend 7/1/2005
44012		Outdoor Center	Individual Equipment: Snowboard Boots	8.00 per day 7/1/2005

2006 - 2007

Service Fees

Fund	Department	Description	2006 - 07 Fee	Last Date Changed
44012	Viking Union	Outdoor Center	Individual Equipment: Telemark Boots	18.00 per weekend 7/1/2005
44012		Outdoor Center	Individual Equipment: Telemark Boots	8.00 per day 7/1/2000
44012		Outdoor Center	Individual Equipment: Telemark Skis	8.00 per day 7/1/2005
44012		Outdoor Center	Individual Equipment: Telemark Skis	18.00 per weekend 7/1/2005
44012		Outdoor Center	Individual Equipment: X Country Boots	9.00 per weekend 7/1/2005
44012		Outdoor Center	Individual Equipment: X Country Boots	4.00 per day 7/1/2005
44012		Outdoor Center	Individual Equipment: X Country Skis	5.50 per day 7/1/2005
44012		Outdoor Center	Individual Equipment: X Country Skis	12.25 per weekend 7/1/2005
44012		Outdoor Center	Mountaineering Accessories: 11oz. Fuel Bottle	3.50 per weekend 7/1/2005
44012		Outdoor Center	Mountaineering Accessories: 11oz. Fuel Bottle	1.50 per day 7/1/2000
44012		Outdoor Center	Mountaineering Accessories: 2 person tent	6.00 per day 7/1/2005
44012		Outdoor Center	Mountaineering Accessories: 2 person tent	13.50 per weekend 7/1/2005
44012		Outdoor Center	Mountaineering Accessories: 2 person/ 4 season tent	7.50 per day 7/1/2005
44012		Outdoor Center	Mountaineering Accessories: 2 person/ 4 season tent	16.75 per weekend 7/1/2005
44012		Outdoor Center	Mountaineering Accessories: 22oz. Fuel Bottle	4.50 per weekend 7/1/2005
44012		Outdoor Center	Mountaineering Accessories: 22oz. Fuel Bottle	2.00 per day 7/1/2005
44012		Outdoor Center	Mountaineering Accessories: 3 person tent	16.75 per weekend 7/1/2005
44012		Outdoor Center	Mountaineering Accessories: 3 person tent	7.50 per day 7/1/2000
44012		Outdoor Center	Mountaineering Accessories: 33oz. Fuel Bottle	2.50 per day 7/1/2005
44012		Outdoor Center	Mountaineering Accessories: 33oz. Fuel Bottle	5.50 per weekend 7/1/2005
44012		Outdoor Center	Mountaineering Accessories: 4 person tent	22.50 per weekend 7/1/2005
44012		Outdoor Center	Mountaineering Accessories: 4 person tent	10.00 per day 7/1/2000
44012		Outdoor Center	Mountaineering Accessories: 6 person/ 3 season tent	22.50 per weekend 7/1/2005
44012		Outdoor Center	Mountaineering Accessories: 6 person/ 3 season tent	10.00 per day 7/1/2005
44012		Outdoor Center	Mountaineering Accessories: Avalanche Safety-Probe	2.00 per day 7/1/2000
44012		Outdoor Center	Mountaineering Accessories: Avalanche Safety-Probe	4.50 per weekend 7/1/2000
44012		Outdoor Center	Mountaineering Accessories: Avalanche Safety-Transceivers	11.25 per weekend 7/1/2005
44012		Outdoor Center	Mountaineering Accessories: Avalanche Safety-Transceivers	5.00 per day 7/1/2005
44012		Outdoor Center	Mountaineering Accessories: Backpack Stove	4.00 per day 7/1/2005
44012		Outdoor Center	Mountaineering Accessories: Backpack Stove	7.00 per weekend 7/1/2000
44012		Outdoor Center	Mountaineering Accessories: Bicycle Tool Use Fee	1.85 per use 7/1/2005
44012		Outdoor Center	Mountaineering Accessories: Crampons (strap on)	3.00 per day 7/1/2005

Fund	Department	Description	2006 - 07 Fee	Last Date Changed
44012	Viking Union	Outdoor Center	Mountaineering Accessories: Crampons (strap on)	6.75 per weekend 7/1/2005
44012		Outdoor Center	Mountaineering Accessories: Crash Pad	4.00 per day 7/1/2005
44012		Outdoor Center	Mountaineering Accessories: Gaiters	3.25 per weekend 7/1/2005
44012		Outdoor Center	Mountaineering Accessories: Gaiters	1.50 per day 7/1/2000
44012		Outdoor Center	Mountaineering Accessories: Helmet	5.50 per weekend 7/1/2005
44012		Outdoor Center	Mountaineering Accessories: Helmet	2.50 per day 7/1/2005
44012		Outdoor Center	Mountaineering Accessories: Ice Axe	3.00 per day 7/1/2000
44012		Outdoor Center	Mountaineering Accessories: Ice Axe	6.75 per weekend 7/1/2005
44012		Outdoor Center	Mountaineering Accessories: Internal Frame Pack	6.00 per day 7/1/2005
44012		Outdoor Center	Mountaineering Accessories: Internal Frame Pack	13.50 per weekend 7/1/2005
44012		Outdoor Center	Mountaineering Accessories: Rock Shoes	4.00 per day 7/1/2005
44012		Outdoor Center	Mountaineering Accessories: Sleeping bag	13.50 per weekend 7/1/2005
44012		Outdoor Center	Mountaineering Accessories: Sleeping bag	6.00 per day 7/1/2005
44012		Outdoor Center	Mountaineering Accessories: Sleeping bag (2 season)	9.00 per weekend 7/1/2000
44012		Outdoor Center	Mountaineering Accessories: Sleeping bag (2 season)	4.00 per day 7/1/2000
44012		Outdoor Center	Mountaineering Accessories: Sleeping bag (3 season)	13.50 per weekend 7/1/2005
44012		Outdoor Center	Mountaineering Accessories: Sleeping pad	3.25 per weekend 7/1/2005
44012		Outdoor Center	Mountaineering Accessories: Sleeping pad	1.50 per day 7/1/2005
44012		Outdoor Center	Mountaineering Accessories: Snow saw	3.25 per weekend 7/1/2005
44012		Outdoor Center	Mountaineering Accessories: Snow saw	1.50 per day 7/1/2005
44012		Outdoor Center	Mountaineering Accessories: Snow shovel	3.00 per day 7/1/2000
44012		Outdoor Center	Mountaineering Accessories: Snow shovel	6.75 per weekend 7/1/2005
44012		Outdoor Center	Mountaineering Accessories: Snow Study Kit	3.00 per day 7/1/2005
44012		Outdoor Center	Mountaineering Accessories: Snow Study Kit	6.75 per weekend 7/1/2005
44012		Outdoor Center	Mountaineering Accessories: Snowshoes	11.25 per weekend 7/1/2005
44012		Outdoor Center	Mountaineering Accessories: Snowshoes	5.00 per day 7/1/2005
44012		Outdoor Center	Ski Pkgs (skis, boots, poles): Back Country	8.00 per day 7/1/2005
44012		Outdoor Center	Ski Pkgs (skis, boots, poles): Back Country	18.00 per weekend 7/1/2005
44012		Outdoor Center	Ski Pkgs (skis, boots, poles): Telemark	33.75 per weekend 7/1/2005
44012		Outdoor Center	Ski Pkgs (skis, boots, poles): Telemark	15.00 per day 7/1/2005
44012		Outdoor Center	Ski Pkgs (skis, boots, poles): X-Country	7.00 per day 7/1/2005
44012		Outdoor Center	Ski Pkgs (skis, boots, poles): X-Country	15.75 per weekend 7/1/2005

2006 - 2007

Service Fees

Fund	Department	Description	2006 - 07 Fee	Last Date Changed	
44012	Viking Union	Outdoor Center	Snowboard Pkgs (boots, board)	31.50 per weekend	7/1/2005
44012		Outdoor Center	Snowboard Pkgs (boots, board)	14.00 per day	7/1/2005
44012		Outdoor Center	Water sports: River rafts w/accessories	28.00 per day	7/1/2005
44012		Outdoor Center	Water sports: River rafts w/accessories	63.00 per weekend	7/1/2005
44012		Outdoor Center	Water sports: Sea Kayaks w/accessories, Double	63.00 per weekend	7/1/2005
44012		Outdoor Center	Water sports: Sea Kayaks w/accessories, Double	28.00 per day	7/1/2005
44012		Outdoor Center	Water sports: Sea Kayaks w/accessories, Single	45.00 per weekend	7/1/2005
44012		Outdoor Center	Water sports: Sea Kayaks w/accessories, Single	20.00 per day	7/1/2005
44012		Publicity Center	Banners 12' x 4' - PC Produced-hand painted-placed in reserved location	16.00	7/1/2000
44012		Publicity Center	Banners 12' x 4' - Self Produced-placed in reserved location	4.00	7/1/2000
44012		Publicity Center	CD/DVD Reproduction-CD	1.30 each	7/1/2005
44012		Publicity Center	CD/DVD Reproduction-DVD (100+)	2.10 each	7/1/2005
44012		Publicity Center	CD/DVD Reproduction-DVD (up to 100)	2.50 each	7/1/2005
44012		Publicity Center	Distribution: We'll post posters, place table tents, put up banners	15.00	7/1/2000
44012		Publicity Center	Faxing	3.00 per fax	7/1/2005
44012		Publicity Center	Full Color Inkjet Printing- Glossy Paper	5.00 per linear foot	7/1/2005
44012		Publicity Center	Full Color Inkjet Printing- Outdoor Water-Resistant Signage	10.00 per linear foot	7/1/2005
44012		Publicity Center	Full Color Inkjet Printing- Uncounted Banner Paper	2.00 per linear foot	7/1/2005
44012		Publicity Center	Graphic Design, photography, videography	13.00 per hour	7/1/2005
44012		Publicity Center	Lamination (11 x 17)	3.00 each	7/1/2000
44012		Publicity Center	Lamination (8 1/2 x 11)	2.00 each	7/1/2000
44012		Publicity Center	Press Releases (maximum 20 locations per fee)	15.00	7/1/2000
44012		Publicity Center	Shuttle Poster Distribution	5.00 per posting	7/1/2005
44012		Room Rentals	Lakewood Lounge (23'x31'; 650 sq ft)	35.00 per hour	7/1/2000
44012		Room Rentals	Off Campus-Viking Union 460 (26'x16'; 416 sq ft)	25.00 per hour	7/1/2000
44012		Room Rentals	Off Campus-Viking Union 462A, 462B (26'x44'; 1,144 sq ft)	25.00 per hour/Room	7/1/2000
44012		Room Rentals	Off Campus-Viking Union 462A, 462B (26'x44'; 1,144 sq ft)	40.00 per hour/Suite	7/1/2000
44012		Room Rentals	Off Campus-Viking Union 464 (46'x20'; 920 sq ft)	40.00 per hour	7/1/2000
44012		Room Rentals	Off Campus-Viking Union 565A,B,C (70'x40'; 2,800 sq ft)	700.00 per suite/day	7/1/2000
44012		Room Rentals	Off Campus-Viking Union 565A,B,C (70'x40'; 2,800 sq ft)	250.00 per room/day	7/1/2000
44012		Room Rentals	Off Campus-Viking Union 567 (32'x32'; 1,024 sq ft)	250.00 per day	7/1/2000
44012		Room Rentals	Off Campus-Viking Union 605 (78'x76'; 5,928 sq ft + lobby 16'x28'; 448 sq ft)	1,200.00 per day	7/1/2000

Fund	Department	Description	2006 - 07 Fee	Last Date Changed
44012	Viking Union	Room Rentals	Off Campus-Viking Union 714 (28'x17'; 476 sq ft)	75.00 per day 7/1/2000
44012		Room Rentals	Viqueen Lodge-All others	40.00 per day 7/1/2005
44012		Room Rentals	Viqueen Lodge-Students	25.00 per day 7/1/2005
44012		Vending Permits	All others-9 wk Summer Session	500.00 +50.00 for power 7/1/2004
44012		Vending Permits	All others-Daily	20.00 +5.00 for power 7/1/2004
44012		Vending Permits	All others-Quarter	600.00 +60.00 for power 7/1/2004
44012		Vending Permits	All others-Weekly	75.00 +20.00 for power 7/1/2004
44012		Vending Permits	University, Non-Profit, Charitable Organizations	Free 7/1/2000
45013	Western Front	Local Advertising Rates	Academic year retail advertising: ad picked up (w/o changes) from the Tuesday edition to the Friday edition of the same week.	25% discount 7/1/2002
45013		Local Advertising Rates	Annual Bulk Contract: Off Campus, 121-180 x 3 Academic Quarters	5.94 7/1/2006
45013		Local Advertising Rates	Annual Bulk Contract: Off Campus, 181+ x 3 Academic Quarters	5.72 7/1/2006
45013		Local Advertising Rates	Annual Bulk Contract: Off Campus, 40-80 x 3 Academic Quarters	6.60 7/1/2006
45013		Local Advertising Rates	Annual Bulk Contract: Off Campus, 81-120 x 3 Academic Quarters	6.27 7/1/2006
45013		Local Advertising Rates	Annual Bulk Contract: On Campus, 121-180 x 3 Quarters	4.91 7/1/2006
45013		Local Advertising Rates	Annual Bulk Contract: On Campus, 181+ x 3 Quarters	4.65 7/1/2006
45013		Local Advertising Rates	Annual Bulk Contract: On Campus, 40-80 x 3 Academic Quarters	5.37 7/1/2006
45013		Local Advertising Rates	Annual Bulk Contract: On Campus, 81-120 x 3 Quarters	5.22 7/1/2006
45013		Local Advertising Rates	Classified Line Ads, 28 character per line	0.20 after 3 lines 7/1/2002
45013		Local Advertising Rates	Classified Line Ads, 28 character per line: Off Campus	3.85 1st 3 lines 7/1/2006
45013		Local Advertising Rates	Classified Line Ads, 28 character per line: On Campus	3.61 1st 3 lines 7/1/2006
45013		Local Advertising Rates	General / Non-contractual: Off Campus	8.08 pci 7/1/2006
45013		Local Advertising Rates	General / Non-contractual: On Campus	7.59 pci 7/1/2006
45013		Local Advertising Rates	Inserts: 4 tab: Off Campus	45.65 per K 7/1/2006
45013		Local Advertising Rates	Inserts: 4 tab: On Campus	42.90 per K 7/1/2006
45013		Local Advertising Rates	Inserts: 8 tab: Off Campus	52.25 per K 7/1/2006
45013		Local Advertising Rates	Inserts: 8 tab: On Campus	49.10 per K 7/1/2006
45013		Local Advertising Rates	Inserts: Single sheet: Off Campus	41.25 per K 7/1/2006
45013		Local Advertising Rates	Inserts: Single Sheet: On Campus	38.76 per K 7/1/2006
45013		Local Advertising Rates	Open Rate: On Campus	6.20 pci 7/1/2006
45013		Local Advertising Rates	Pre-paid advertising	3% discount 7/1/2002
45013		Local Advertising Rates	Quarterly Bulk Contract: Off Campus, 121-180	6.27 7/1/2006
45013		Local Advertising Rates	Quarterly Bulk Contract: Off Campus, 181+	5.94 7/1/2006

Fund	Department	Description	2006 - 07 Fee	Last Date Changed
45013	Western Front	Local Advertising Rates	Quarterly Bulk Contract: Off Campus, 40-80	6.93 7/1/2006
45013		Local Advertising Rates	Quarterly Bulk Contract: Off Campus, 81-120	6.60 7/1/2006
45013		Local Advertising Rates	Quarterly Bulk Contract: On Campus, 121-180	5.22 7/1/2006
45013		Local Advertising Rates	Quarterly Bulk Contract: On Campus, 181+	4.91 7/1/2006
45013		Local Advertising Rates	Quarterly Bulk Contract: On Campus, 40-80	5.42 7/1/2006
45013		Local Advertising Rates	Quarterly Bulk Contract: On Campus, 81-120	5.37 7/1/2006
45013		Local Advertising Rates	Special Non-Contract Rates, 2 Color: Off Campus	230.00 7/1/2006
45013		Local Advertising Rates	Special Non-Contract Rates, 2 Color: On Campus	217.09 7/1/2006
45013		Local Advertising Rates	Special Non-Contract Rates, Full Color: Off Campus	352.00 7/1/2006
45013		Local Advertising Rates	Special Non-Contract Rates, Full Color: On Campus	330.81 7/1/2006
45013		Local Advertising Rates	Special Non-Contract Rates, Full page (5x15): Off Campus	434.50 7/1/2006
45013		Local Advertising Rates	Special Non-Contract Rates, Full page (5x15): On Campus	408.35 7/1/2006
45013		Local Advertising Rates	Special Non-Contract Rates, Full page grand opening or anniversary ad (one per year per customer)	275.00 7/1/2003
45013		Local Advertising Rates	Special Non-Contract Rates, Half Page (5x8): Off Campus	258.50 7/1/2006
45013		Local Advertising Rates	Special Non-Contract Rates, Half Page (5x8): On Campus	242.94 7/1/2006
45013		Local Advertising Rates	Special Non-Contract Rates, Quarter Page (5"x7.5"): Off Campus	170.50 7/1/2006
45013		Local Advertising Rates	Special Non-Contract Rates, Quarter Page (5x7.5): On Campus	160.23 7/1/2006
45013		Local Advertising Rates	Special Non-Contract Rates, Spot Color: Off Campus	110.00 7/1/2006
45013		Local Advertising Rates	Special Non-Contract Rates, Spot Color: On Campus	103.38 7/1/2006
45013		Local Advertising Rates	Summer Quarter Open Rate: Off Campus	5.50 7/1/2006
45013		Local Advertising Rates	Summer Quarter Open Rate: On Campus	5.16 7/1/2006
45013		Local Advertising Rates	Western Front Online Advertising	Variable 7/1/2002
45013		National Advertising Rates	Annual Bulk Contract: 1500 ci	7.70 pci 7/1/2002
45013		National Advertising Rates	Annual Bulk Contract: 2500 ci	7.50 pci 7/1/2002
45013		National Advertising Rates	Annual Bulk Contract: 3600 ci	7.25 pci 7/1/2002
45013		National Advertising Rates	Annual Bulk Contract: 3900 ci	7.10 pci 7/1/2002
45013		National Advertising Rates	Annual Bulk Contract: 6000 ci	6.50 pci 7/1/2002
45013		National Advertising Rates	Discount: Ad picked up (no changes) from Tuesday edition to Friday edition	25% 7/1/2002
45013		National Advertising Rates	Discount: Pre-paid advertising	5% 7/1/2002
45013		National Advertising Rates	Inserts: 4 tab	75.00 per K 7/1/2002
45013		National Advertising Rates	Inserts: 8 tab	85.00 per K 7/1/2002
45013		National Advertising Rates	Inserts: Single sheet	65.00 per K 7/1/2002

Fund	Department	Description	2006 - 07 Fee	Last Date Changed
45013	Western Front	National Advertising Rates Open Rate: General/Non-contractual	8.00 pci	7/1/2002
45013		National Advertising Rates Special Non-Contract Rates, 2 Color	230.00 pci	7/1/2002
45013		National Advertising Rates Special Non-Contract Rates, 3 Color	355.00 pci	7/1/2002
45013		National Advertising Rates Special Non-Contract Rates, Full page (5x15)	575.00 pci	7/1/2002
45013		National Advertising Rates Special Non-Contract Rates, Half Page (5x8)	310.00 pci	7/1/2002
45013		National Advertising Rates Special Non-Contract Rates, Quarter Page (3x8)	185.00 pci	7/1/2002
45013		National Advertising Rates Special Non-Contract Rates, Spot Color	115.00 pci	7/1/2002
23096	Wilson Library	Copies Made by Library Staff	0.15 per copy	7/1/1993
23096		Self Serve Copies	0.10 per copy	7/1/1993
23107		Library Community Cards	25.00	7/1/1992
23091	Wilson Library Fines	Late Fee: Start 1st Day After Due Date	0.50 per day	7/1/2005
23091		Recall Late Fee: Start 1st Day After Due Date	1.00 per day	7/1/2005
23091		Video Late Fee: Start 1st Day After Due Date	1.00 per day	7/1/2000
15000	Woodring College of Education	Residency ESA Certificate-School Counseling	35.00	7/1/2005
15000		2-year Renewal of Residency Principal Certificate	10.00	7/1/2004
15000		2-year Renewal of Residency Teacher Certificate	10.00	7/1/2002
15000		Additional Endorsement	15.00 each endorsement	7/1/1995
15000		Audit Fee- Part Time Students Only	10.00 per credit	7/1/1995
15000		Continuing Principal Certificate	70.00	7/1/1995
15000		Continuing Teacher Certificate	70.00	7/1/1995
15000		Initial Administrator Certificate - Superintendent	35.00	7/1/2005
15000		Intern Substitute Teacher Certificate	5.00	7/1/1995
15000		Professional Principal Certificate	25.00	7/1/2004
15000		Professional Teacher Certificate	25.00	7/1/1995
15000		Renewal of Initial Teacher Certificate	15.00	7/1/1995
15000		Residency Principal Certificate	35.00	7/1/2004
15000		Residency Teacher Certificate with First Issue Endorsement(s)	35.00	7/1/2005
20119		Additional Endorsement Program (Washington State Certificate Teacher)-Other	35.00	7/1/2002
20119		Additional Endorsement Program (Washington State Certificate Teacher)-WWU Degree	25.00	7/1/2002
20119		Endorsement Evaluation	Variable	7/1/2002
20119		Intern Substitute Certificate (WWU Term)	25.00	7/1/2002
20119		Professional (Continuing) Teaching Certificate-Other	35.00	7/1/2002

2006 - 2007**Service Fees**

Fund	Department	Description	2006 - 07 Fee	Last Date Changed
20119	Woodring College of Education	Professional (Continuing) Teaching Certificate-WWU Degree	25.00	7/1/2002
20119		Renewal of Residency Initial Teaching Certificate-Other	35.00	7/1/2002
20119		Renewal of Residency Initial Teaching Certificate-WWU Degree	25.00	7/1/2002
20119		Residency Certificate-Other	35.00	7/1/2002
20119		Residency Certificate-WWU Degree	25.00	7/1/2002

2006 - 2007

Service Fees

Fund	Department	Description	2006 - 07 Fee	Last Date Changed
43000	Transportation/Parking	Bike Lockers Bike Locker Key Deposit (refundable)	50.00	7/1/2006
43000		Bike Lockers Bike Locker Rental	60.00 per year	7/1/2006
43000		Bike Lockers Bike Locker Rental	15.00 per quarter	7/1/2006
43000		Event Fees Conference permits	Visitor Rates	7/30/2004
43000		Event Fees Lot reservations	36.97 +tax	7/30/2004
43000		Event Fees Pre-assigned event permits	Visitor Rates	7/30/2004
43000		Event Fees Sandwich Boards	5.00	7/30/2004
43000		Event Fees Special event attendants	10.00 per hour	7/30/2004
43000		Event Fees Special event officers	25.00 per hour	7/30/2004
43000		Event Fees Special event signs	10.00	7/30/2004
43000		Event Fees Special event tent	10.00 per hour	7/30/2004
43000		Event Fees Special event tent	25.00 per hour	7/30/2004
43000		Event Fees Sports camp permits	Visitor Rates	7/30/2004
43000		Permits Academic Year: 16CR	215.49 +tax	6/17/2005
43000		Permits Academic Year: C Student Carpool	160.81 +tax	6/17/2005
43000		Permits Academic Year: C/12A	215.49 +tax	6/17/2005
43000		Permits Academic Year: G Fac/Staff Carpool	186.05 +tax	6/17/2005
43000		Permits Academic Year: G/R	246.93 +tax	6/17/2005
43000		Permits Academic Year: Motorcycle	43.96 +tax	6/17/2005
43000		Permits Academic Year: Reserved	541.22 +tax	6/17/2005
43000		Permits Academic Year: Vanpool	128.66 +tax	6/17/2005
43000		Permits Annual: 16CR	274.46 +tax	6/17/2005
43000		Permits Annual: C Student Carpool	204.76 +tax	6/17/2005
43000		Permits Annual: C/12A	274.46 +tax	6/17/2005
43000		Permits Annual: G Fac/Staff Carpool	236.79 +tax	6/17/2005
43000		Permits Annual: G/R	314.59 +tax	6/17/2005
43000		Permits Annual: Motorcycle	55.23 +tax	6/17/2005

2006 - 2007

Service Fees

Fund	Department	Description	2006 - 07 Fee	Last Date Changed
43000	Transportation/Parking	Permits Annual: Reserved	721.63 +tax	6/17/2005
43000		Permits Annual: Vanpool	164.02 +tax	6/17/2005
43000		Permits Change in permit hours/Transfers	5.00 +tax	7/30/2004
43000		Permits Commuter Packet (packets of 10 sold quarterly to WWU employees)	12.35 +tax	7/1/2006
43000		Permits Evening Parking-Evenings and Weekends - 5pm-7am M-F	.92 +tax	7/30/2004
43000		Permits Lost or Stolen Permit replacement: 4 times or more - (WAC 516-12, 14)	28.75	7/1/2006
43000		Permits Lost or Stolen Permit replacement: 1st time - (WAC 516-12, 14)	5.75	7/1/2006
43000		Permits Lost or Stolen Permit replacement: 2nd time - (WAC 516-12, 14)	11.50	7/1/2006
43000		Permits Lost or Stolen Permit replacement: 3rd time - (WAC 516-12, 14)	23.00	7/1/2006
43000		Permits Lot 6V - Visitor Pay Station - Saturday and Sunday, all hours	.92 +tax	7/30/2004
43000		Permits Lot 6V - Visitor Pay Station - Weekdays - 7am-5pm M-F	1.85 +tax	7/30/2004
43000		Permits Lot 6V - Visitor Pay Station - Evenings and Weekends - 5pm-7am M-F	.92 +tax	7/30/2004
43000		Permits Meter-Parking meters - all lots, all hours	1.85 +tax	7/30/2004
43000		Permits Parking-Saturday and Sunday, all hours	.92 +tax	7/30/2004
43000		Permits Permit refunds/Lot transfers	5.00 +tax	7/30/2004
43000		Permits Quarterly: 16CR	71.83 +tax	6/17/2005
43000		Permits Quarterly: C Student Carpool	53.60 +tax	6/17/2005
43000		Permits Quarterly: C/12A	71.83 +tax	6/17/2005
43000		Permits Quarterly: G Fac/Staff Carpool	62.01 +tax	6/17/2005
43000		Permits Quarterly: G/R	82.31 +tax	6/17/2005
43000		Permits Quarterly: Motorcycle	14.65 +tax	6/17/2005
43000		Permits Quarterly: Reserved	180.40 +tax	6/17/2005
43000		Permits Quarterly: Vanpool	42.89 +tax	6/17/2005
43000		Permits Reserved Departmental Use - (WAC 516-12, 14)	70.00	7/30/2004
43000		Permits Summer: 16CR	58.96 +tax	6/17/2005
43000		Permits Summer: C Student Carpool	43.95 +tax	6/17/2005
43000		Permits Summer: C/12A	58.96 +tax	6/17/2005

2006 - 2007

Service Fees

Fund	Department	Description	2006 - 07 Fee	Last Date Changed
43000	Transportation/Parking	Permits Summer: G Fac/Staff Carpool	50.74 +tax	6/17/2005
43000		Permits Summer: G/R	67.65 +tax	6/17/2005
43000		Permits Summer: Motorcycle	11.27 +tax	6/17/2005
43000		Permits Summer: Reserved	180.40 +tax	6/17/2005
43000		Permits Summer: Vanpool	35.38 +tax	6/17/2005
43000		Permits Vendor Packet (packets of 5 sold quarterly only to vendors/contractors)	21.44 +tax	7/1/2006
43000		Permits Visitor: 15 minutes - 60 minutes	1.85 +tax	7/30/2004
43000		Permits Visitor: Motorcycles (all day)	1.85 +tax	7/30/2004
43000		Permits Visitor: Over 1 hour-up to 2 hours	3.70 +tax	7/30/2004
43000		Permits Visitor: Over 2 hours up to 3 hours	5.55 +tax	7/30/2004
43000		Permits Visitor: Over 3 hours up to 4 hours	7.39 +tax	7/30/2004
43000		Permits Visitor: Over 4 hours	9.24 +tax	7/30/2004
43000		Permits Visitor: Weekly Permit	27.73 +tax	7/30/2004
43000		Violations Altered/forged permit displayed	115.00	7/1/2006
43000		Violations Bicycle - Failure to obey dismount policy (WAC 516-13): 1st offense	11.50	7/1/2006
43000		Violations Bicycle - Failure to obey dismount policy (WAC 516-13): 2nd offense	28.75	7/1/2006
43000		Violations Bicycle - Failure to obey dismount policy (WAC 516-13): 3rd offense	57.50	7/1/2006
43000		Violations Bicycle - Failure to stay in control of bicycle (WAC 516-13): 1st offense	11.50	7/1/2006
43000		Violations Bicycle - Failure to stay in control of bicycle (WAC 516-13): 2nd offense	28.75	7/1/2006
43000		Violations Bicycle - Failure to stay in control of bicycle (WAC 516-13): 3rd offense	57.50	7/1/2006
43000		Violations Bicycle - Failure to use due care and caution (WAC 516-13): 1st offense	11.50	7/1/2006
43000		Violations Bicycle - Failure to use due care and caution (WAC 516-13): 2nd offense	28.75	7/1/2006
43000		Violations Bicycle - Failure to use due care and caution (WAC 516-13): 3rd offense	57.50	7/1/2006
43000		Violations Bicycle - Failure to yield right of way to pedestrian (WAC 516-13): 1st offense	11.50	7/1/2006
43000		Violations Bicycle - Failure to yield right of way to pedestrian (WAC 516-13): 2nd offense	28.75	7/1/2006
43000		Violations Bicycle - Failure to yield right of way to pedestrian (WAC 516-13): 3rd offense	57.50	7/1/2006
43000		Violations Bicycle - Riding on lawn or other restricted area (WAC 516-13): 1st offense	11.50	7/1/2006

2006 - 2007

Service Fees

Fund	Department	Description	2006 - 07 Fee	Last Date Changed
43000	Transportation/Parking	Violations Bicycle - Riding on lawn or other restricted area (WAC 516-13): 2nd offense	28.75	7/1/2006
43000		Violations Bicycle - Riding on lawn or other restricted area (WAC 516-13): 3rd offense	57.50	7/1/2006
43000		Violations Blocking Traffic	28.75	7/1/2006
43000		Violations Booted vehicle daily storage fee	11.50	7/1/2006
43000		Violations Booting fee	57.50	7/1/2006
43000		Violations Collection fee: citation price greater than \$100	Citation Price (+)	7/1/2006
43000		Violations Collection fee: citation price to \$100	Citation Price (+)	7/1/2006
43000		Violations Delinquent citation fees: after 13th day	11.50	7/1/2006
43000		Violations Delinquent citation fees: after 34th day	17.25	7/1/2006
43000		Violations Disabled space	State's Rate	7/1/2006
43000		Violations Driveway or walkway violation	28.75	7/1/2006
43000		Violations Expired registration (car tabs): 1st offense	State's Rate	7/1/2006
43000		Violations Expired registration (car tabs): 2nd offense	State's Rate	7/1/2006
43000		Violations Fire hydrant or fire lane	57.50	7/1/2006
43000		Violations Grass or landscaped area	28.75	7/1/2006
43000		Violations Improper display	5.75	7/1/2006
43000		Violations Lost/stolen/destroyed permit displayed	115.00	7/1/2006
43000		Violations No valid permit	23.00	7/1/2006
43000		Violations Occupying more than one space	11.50	7/1/2006
43000		Violations Overtime at load zone	17.25	7/1/2006
43000		Violations Overtime at meter	17.25	7/1/2006
43000		Violations Overtime use of official business/vendor/all-lots permit	17.25	7/1/2006
43000		Violations Prohibited area	28.75	7/1/2006
43000		Violations Reserved area	57.50	7/1/2006
43000		Violations Skateboard/Skate - Using skate board, coaster, in line skates (WAC 516-15): 1st offense	11.50	7/1/2006
43000		Violations Skateboard/Skate - Using skate board, coaster, in line skates (WAC 516-15): 2nd & future offenses	57.50	7/1/2006
43000		Violations Unauthorized permit transfer	23.00	7/1/2006

Fund	Department	Description	2006 - 07 Fee	Last Date Changed
30071	Administrative Computing	Network Connection Charge	25.00 per month	7/1/1994
30071		Programmer: Junior	44.33 per hour	7/1/2000
30071		Programmer: Senior	52.93 per hour	7/1/2000
30071		Programmer: Student	11.00 per hour	7/1/1993
30071	Machine Room Overhead charge for blade server	Charge for Rack overhead for blade servers	900.00	7/1/2006
30071	Machine Room Rack U Charge	Rack U charge for standard servers	110.00 per U	7/1/2006
30071	SAN Disc	SAN Disc purchase	25.00 per 1GB	7/1/2006
14170	Admn Svcs Assessment	Publishing Services	34,544.42	7/1/2006
14170		Associated Students	30,794.83	7/1/2006
14170		Bookstore	14,905.32	7/1/2006
14170		Capital Budget Office	3,046.60	7/1/2006
14170		Central Stores	19,872.73	7/1/2006
14170		Extended Ed & Summer Program	46,043.38	7/1/2006
14170		Facilities Management	103,222.85	7/1/2006
14170		Housing and Dining System	199,549.24	7/1/2006
14170		Lockshop	2,971.14	7/1/2006
14170		Parking Services	9,843.84	7/1/2006
14170		Telecommunications	22,845.94	7/1/2006
14170		Viking Union Operations	25,469.73	7/1/2006
14170		Wade King Student Recreation Center	34,014.08	7/1/2006
30072	ATUS	Computer Maintenance: Non-University - Related	Cost + Processing	7/1/2002
30072		Computer Maintenance: University	Cost + Materials	7/30/2004
30076		CD/DVD Printing (full color) - Public	1.00 per disc	7/1/2006
30076		CD/DVD Printing (full color) - University	0.50 per disc	7/1/2006
30076		CD/DVD Printing (single color) - Public	0.50 per disc	7/1/2006
30076		CD/DVD Printing (single color) - University	0.25 per disc	7/1/2006
30076	Classroom Rentals	Multimedia Classrooms: Level 3-Public	103.25 per day	7/1/2006
30076	Classroom Rentals	Multimedia Classrooms: Level 3-University	\$51.5/per day max; \$15.5/hour	7/1/2006
30076	Classroom Rentals	Multimedia Classrooms: Level 4-Public	206.25 per day	7/1/2006
30076	Classroom Rentals	Multimedia Classrooms: Level 4-University	\$103/per day max; \$31/hour min	7/1/2006
30076	Commencement DVDs	A DVD disc copy of a WWU Commencement Ceremony	\$20 per DVD plus \$5 shipping	7/1/2006
30076	Commencement Videotapes	A VHS tape copy of a WWU Commencement Ceremony	\$15 per tape plus \$5 shipping	7/1/2006

Fund	Department	Description	2006 - 07 Fee	Last Date Changed
30076	ATUS	Equipment Rental	Audio: Cassette Recorder-Public	14.50 per day 7/1/2006
30076		Equipment Rental	Audio: Cassette Recorder-University	12.40 per day 7/1/2006
30076		Equipment Rental	Audio: CD + Cassette Boom Box-Public	25.80 per day 7/1/2006
30076		Equipment Rental	Audio: CD + Cassette Boom Box-University	12.40 per day 7/1/2006
30076		Equipment Rental	Audio: Conference Microphone-Public	12.40 per day 7/1/2006
30076		Equipment Rental	Audio: Conference Microphone-University	6.20 per day 7/1/2006
30076		Equipment Rental	Audio: Digital Audio Recorder - Public	50.00 per day 7/1/2006
30076		Equipment Rental	Audio: Digital Audio Recorder - University	30.00 per day 7/1/2006
30076		Equipment Rental	Audio: Dual Cassette Boom Box-Public	12.40 per day 7/1/2006
30076		Equipment Rental	Audio: Dual Cassette Boom Box-University	6.20 per day 7/1/2006
30076		Equipment Rental	Audio: Handheld audiocassette recorder-Public	10.30 per day 7/1/2006
30076		Equipment Rental	Audio: Handheld audiocassette recorder-University	5.15 per day 7/1/2006
30076		Equipment Rental	Audio: Handheld or Clip-on Microphone (omni, lavalier)-Public	8.25 per day 7/1/2006
30076		Equipment Rental	Audio: Handheld or Clip-on Microphone (omni, lavalier)- University	4.10 per day 7/1/2006
30076		Equipment Rental	Audio: PA System + Tethered Mic-Public	10.30 per day 7/1/2006
30076		Equipment Rental	Audio: PA System + Tethered Mic-University	5.15 per day 7/1/2006
30076		Equipment Rental	Audio: PA System + Wireless Mic-Public	56.75 per day 7/1/2006
30076		Equipment Rental	Audio: PA System + Wireless Mic-University	20.65 per day 7/1/2006
30076		Equipment Rental	Audio: Presidential Podium w/ built in PA + Mic-University	16.50 per day 7/1/2006
30076		Equipment Rental	Audio: Shotgun Microphone-Public	25.80 per day 7/1/2006
30076		Equipment Rental	Audio: Shotgun Microphone-University	12.40 per day 7/1/2006
30076		Equipment Rental	Audio: Transcriber-Public	25.80 per day 7/1/2006
30076		Equipment Rental	Audio: Transcriber-University	12.40 per day 7/1/2006
30076		Equipment Rental	Audio: Turntable - Public	8.25 per day 7/1/2006
30076		Equipment Rental	Audio: Turntable - University	4.10 per day 7/1/2006
30076		Equipment Rental	Audio: Wireless Microphone-Public	25.80 per day 7/1/2006
30076		Equipment Rental	Audio: Wireless Microphone-University	12.40 per day 7/1/2006
30076		Equipment Rental	Camera: Light Kit - Public	25.80 per day 7/1/2006
30076		Equipment Rental	Camera: Light Kit - University	12.40 per day 7/1/2006
30076		Equipment Rental	Cameras: Digital Camcorder, 1 Chip-Public	82.50 per day 7/1/2006
30076		Equipment Rental	Cameras: Digital Camcorder, 1 Chip-University	41.25 per day 7/1/2006
30076		Equipment Rental	Cameras: Digital Still Camera-Public	41.25 per day 7/1/2006

Fund	Department	Description	2006 - 07 Fee	Last Date Changed
30076	ATUS	Equipment Rental	Cameras: Digital Still Camera-University	20.65 per day 7/1/2006
30076		Equipment Rental	Cameras: Document Camera-Public	103.25 per day 7/1/2006
30076		Equipment Rental	Cameras: Document Camera-University	51.50 per day 7/1/2006
30076		Equipment Rental	Cameras: Hi-Res Digital Camcorder, 3 Chip-Public	123.75 per day 7/1/2006
30076		Equipment Rental	Cameras: Hi-Res Digital Camcorder, 3 Chip-University	62.00 per day 7/1/2006
30076		Equipment Rental	Cameras: Tripod-Public	12.40 per day 7/1/2006
30076		Equipment Rental	Cameras: Tripod-University	6.20 per day 7/1/2006
30076		Equipment Rental	Cameras: VHS Camcorder-Public	41.25 per day 7/1/2006
30076		Equipment Rental	Cameras: VHS Camcorder-University	20.65 per day 7/1/2006
30076		Equipment Rental	Cameras: Whiteboard Recorder-Public	41.25 per day 7/1/2006
30076		Equipment Rental	Cameras: Whiteboard Recorder-University	20.65 per day 7/1/2006
30076		Equipment Rental	Cameras: Wireless Microphone for Camcorders- Public	15.50 per day 7/1/2006
30076		Equipment Rental	Cameras: Wireless Microphone for Camcorders- University	8.25 per day 7/1/2006
30076		Equipment Rental	Computer Wireless Network Cards-University	12.40 per day 7/1/2006
30076		Equipment Rental	Computers: CD Recorder- Public	25.80 per day 7/1/2006
30076		Equipment Rental	Computers: CD Recorder-University	12.40 per day 7/1/2006
30076		Equipment Rental	Computers: Document Slide Scanner - Public	25.80 per day 7/1/2006
30076		Equipment Rental	Computers: Document Slide Scanner - University	12.40 per day 7/1/2006
30076		Equipment Rental	Computers: External Zip Drive-Public	25.80 per day 7/1/2006
30076		Equipment Rental	Computers: External Zip Drive-University	12.40 per day 7/1/2006
30076		Equipment Rental	Computers: Portable Laptop Computer-Public	103.00 per day 7/1/2006
30076		Equipment Rental	Computers: Portable Laptop Computer-University	41.25 per day 7/1/2006
30076		Equipment Rental	Computers: Wireless Mouse-Public	25.80 per day 7/1/2006
30076		Equipment Rental	Computers: Wireless Mouse-University	12.40 per day 7/1/2006
30076		Equipment Rental	Projection: 16mm Film Projector-Public	31.00 per day 7/1/2006
30076		Equipment Rental	Projection: 16mm Film Projector-University	12.40 per day 7/1/2006
30076		Equipment Rental	Projection: 35mm Slide Projector-Public	31.00 per day 7/1/2006
30076		Equipment Rental	Projection: 35mm Slide Projector-University	10.30 per day 7/1/2006
30076		Equipment Rental	Projection: 8mm Film Projector-Public	31.00 per day 7/1/2006
30076		Equipment Rental	Projection: 8mm Film Projector-University	12.40 per day 7/1/2006
30076		Equipment Rental	Projection: Dual Slide Projectors w/slide Sync-Public	36.00 per day 7/1/2006
30076		Equipment Rental	Projection: Dual Slide Projectors w/slide Sync-University	20.65 per day 7/1/2006

Fund	Department	Description	2006 - 07 Fee	Last Date Changed	
30076	ATUS	Equipment Rental	Projection: Easel-Public	12.00 per day	7/1/2003
30076		Equipment Rental	Projection: Easel-University	6.00 per day	7/1/2003
30076		Equipment Rental	Projection: LCD Projector-Public	206.25 per day	7/1/2006
30076		Equipment Rental	Projection: LCD Projector-University	77.50 per day	7/1/2006
30076		Equipment Rental	Projection: Opaque Projector-Public	25.80 per day	7/1/2006
30076		Equipment Rental	Projection: Opaque Projector-University	12.40 per day	7/1/2006
30076		Equipment Rental	Projection: Overhead Projector-Public	25.80 per day	7/1/2006
30076		Equipment Rental	Projection: Overhead Projector-University	12.40 per day	7/1/2006
30076		Equipment Rental	Projection: Screen 4-6 ft wide-Public	12.40 per day	7/1/2006
30076		Equipment Rental	Projection: Screen 4-6 ft wide-University	6.20 per day	7/1/2006
30076		Equipment Rental	Projection: Screen 8 ft wide-Public	20.65 per day	7/1/2006
30076		Equipment Rental	Projection: Screen 8 ft wide-University	10.30 per day	7/1/2006
30076		Equipment Rental	Projection: Slide Viewer w/Cassette Player-Public	22.70 per day	7/1/2006
30076		Equipment Rental	Projection: Slide Viewer w/Cassette Player-University	10.30 per day	7/1/2006
30076		Equipment Rental	Projection: Video Projector-Public	62.00 per day	7/1/2006
30076		Equipment Rental	Projection: Video Projector-University	25.75 per day	7/1/2006
30076		Equipment Rental	Projection: Wireless Remote for Slide Projector-Public	25.80 per day	7/1/2006
30076		Equipment Rental	Projection: Wireless Remote for Slide Projector-University	12.40 per day	7/1/2006
30076		Equipment Rental	Video: Betacam & DV Editing Equipment-Public	23.00 per hour	7/1/2003
30076		Equipment Rental	Video: Betacam & DV Editing Equipment-University Related	12.50 per hour	7/1/2003
30076		Equipment Rental	Video: DVD Player-Public	41.25 per day	7/1/2006
30076		Equipment Rental	Video: DVD Player-University	20.65 per day	7/1/2006
30076		Equipment Rental	Video: DVD Recorder (analog inputs) - Public	40.00	7/1/2006
30076		Equipment Rental	Video: DVD Recorder (analog inputs) - Self Sustaining Depts.	20.00	7/1/2006
30076		Equipment Rental	Video: TV Monitor-Public	25.80 per day	7/1/2006
30076		Equipment Rental	Video: TV Monitor-University	12.40 per day	7/1/2006
30076		Equipment Rental	Video: VCR-Public	25.80 per day	7/1/2006
30076		Equipment Rental	Video: VCR-University	12.40 per day	7/1/2006
30076		General University Computer Labs	Non-Matriculated Students-University	17.00	7/1/2006
30076		General University Computer Labs	Scheduled Lab Use-Public	515.50 per day (max)	7/1/2006
30076		General University Computer Labs	Scheduled Lab Use-Public	103.25 per hour (min)	7/1/2006
30076		General University Computer Labs	Scheduled Lab Use-University	36.00 per hour (min)	7/1/2006

Fund	Department	Description	2006 - 07 Fee	Last Date Changed
30076	ATUS	General University Computer Labs	Scheduled Lab Use-University 154.75 per day (max)	7/1/2006
30072		Labor/Consulting Charges	Assistance, each hour 45.00	7/1/2002
30072		Labor/Consulting Charges	Assistance, minimum per service call 45.00	7/1/2002
30074		Labor/Consulting Charges	Consulting Work-University Activity Cost + Materials	7/1/1999
30076		Labor/Consulting Charges	Consulting Work, Non-University Activity 45.00 per hour + materials	7/1/2003
30076		Labor/Consulting Charges	Graphic Art or Illustration: Non University-Public 50.00 per hour	7/1/2003
30076		Labor/Consulting Charges	Graphic Art or Illustration: University 25.00 per hour	7/1/2003
30076		Labor/Consulting Charges	Instruction-University Direct Support Cost of Materials	7/1/2002
30076		Labor/Consulting Charges	Multimedia Consulting/Support -University Related 18.50 per hour	7/1/2006
30076		Labor/Consulting Charges	Non-University Activity-Public 65.00 per hour	7/1/2002
30076		Large Format Printing	Large Format Printing - Public 30.00 per linear foot	7/1/2006
30076		Large Format Printing	Large Format Printing - University 2.50 per linear foot	7/1/2006
30076		Materials	CD/DVD Jewel Case - Public 0.50	7/1/2006
30076		Materials	CD/DVD Jewel Case - University 0.25	7/1/2006
30076		Materials	CD/DVD Premium Case (w/label insert slot) - Public 1.50	7/1/2006
30076		Materials	CD/DVD Premium Case (w/label insert slot) - University 1.00	7/1/2006
30076		Materials	Digital Discs: CDR-Public 2.00	7/1/2003
30076		Materials	Digital Discs: CDR-University 1.75	7/1/2003
30076		Materials	Digital Discs: DVD-R Public 1.25	7/1/2006
30076		Materials	Digital Discs: DVD-R University 0.75	7/1/2006
30076		Materials	Digital Discs: DVD-RW Public 2.00	7/1/2006
30076		Materials	Digital Discs: DVD-RW University 1.50	7/1/2006
30076		Materials	Digital Discs: SVHS Tape 120 minutes 6.00	7/1/2003
30076		Materials	Digital Tapes: 180 minutes-Public 31.00	7/1/2006
30076		Materials	Digital Tapes: 180 minutes-University 29.00	7/1/2006
30076		Materials	Digital Tapes: 60 minutes-Public 5.50	7/1/2006
30076		Materials	Digital Tapes: 60 minutes-University 4.00	7/1/2006
30076		Materials	Digital Tapes: 80 minutes-Public 10.50	7/1/2006
30076		Materials	Digital Tapes: 80 minutes-University 9.00	7/1/2006
30076		Materials	Film: Elitechrome 100 (24#)-University 6.20 roll	7/1/2006
30076		Materials	Film: Elitechrome 100 (36#)-University 8.25 roll	7/1/2006
30076		Materials	Film: Elitechrome 160T (36#)-University 9.75 roll	7/1/2006

Fund	Department	Description	2006 - 07 Fee	Last Date Changed	
30076	ATUS	Materials	Foam Core (32 x 40)	4.50	7/1/2006
30076		Materials	Mat Board (32 x 40)-University	7.50 per sheet	7/1/2006
30076		Materials	Poster Board (20 x 40)-University	2.90-3.40 per sheet	7/1/2003
30076		Materials	VHS Premium Case (w/label insert slot) - Public	1.50	7/1/2006
30076		Materials	VHS Premium Case (w/label insert slot) - University	1.00	7/1/2006
30076		Materials	Video Tapes: CD-R, Public	0.50	7/1/2006
30076		Materials	Video Tapes: CD-R, University	0.25	7/1/2006
30076		Materials	Video Tapes: CD-RW, Public	1.25	7/1/2006
30076		Materials	Video Tapes: CD-RW, University	1.00	7/1/2006
30076		Materials	Video Tapes: SVHS 120 - Public	3.50	7/1/2006
30076		Materials	Video Tapes: SVHS 120 - University	2.50	7/1/2006
30076		Materials	Video Tapes: VHS (120 min) - Public	2.50	7/1/2006
30076		Materials	Video Tapes: VHS (120 min) - University	1.50	7/1/2006
30076		Materials	Video Tapes: VHS (15 & 20 min)-Public	2.00	7/1/2006
30076		Materials	Video Tapes: VHS (15 & 20 min)-University	1.00	7/1/2006
30076		Materials	Video Tapes: VHS (160 min) - Public	3.00	7/1/2006
30076		Materials	Video Tapes: VHS (160 min) - University	2.00	7/1/2006
30076		Other Services	35mm Slide Output-2000 x 2000 Line-Public	Cost + Materials	7/1/2003
30076		Other Services	35mm Slide Output-2000 x 2000 Line-University	Cost + Materials	7/1/2003
30076		Other Services	35mm Slide Output-4000 x 4000 Line-Public	Cost + Materials	7/1/2003
30076		Other Services	35mm Slide Output-4000 x 4000 Line-University	Cost + Materials	7/1/2003
30076		Other Services	B&W Overheads-University	1.50 each	7/1/2003
30076		Other Services	Color Laser Prints (11 x 17)-University	2.00 each	7/1/2003
30076		Other Services	Color Laser Prints (8 1/2 x 11)-University	1.00 each	7/1/2003
30076		Other Services	Color Overheads-University	2.00 each	7/1/2003
30076		Other Services	Film Processing: Elitechrome 100 (24#)-University	7.20 per roll	7/1/2006
30076		Other Services	Film Processing: Elitechrome 100 (36#)-University	8.25 per roll	7/1/2006
30076		Other Services	Film Processing: Elitechrome 160T (36#)-University	8.25 per roll	7/1/2006
30076		Other Services	Graphix II Vinyl Lettering-University	1.25 per foot	7/1/2003
30076		Other Services	Lamination 12' wide-Public	1.00 per foot	7/1/2003
30076		Other Services	Lamination 12' wide-University	0.50 per foot	7/1/2003
30076		Other Services	Lamination 24' wide-Public	2.00 per foot	7/1/2003

Fund	Department	Description	2006 - 07 Fee	Last Date Changed	
30076	ATUS	Other Services	Lamination 24' wide-University	1.00 per foot	7/1/2003
30076		Other services	Production with Student Labor - Public	25.00 per hour	7/1/2006
30078		Security Systems	Fiber/Steel Security-Computer Lab	70.00 per unit	7/1/2005
30078		Security Systems	Fiber/Steel Security-Small Classroom	100.00 per classroom	7/1/2005
30078		Security Systems	Fiber/Steel Security-Small Computer Lab	750.00 per small lab	7/1/2005
30078		Security Systems	Fiber/Steel Security-Standard Mediated Classroom	225.00 per installation	7/1/2005
30078		Security Systems	Steel Security-Setup	20.00 per workstation	7/1/2005
30073		Software	Academic Software	Cost + Processing	7/1/2001
30073		Software	Desktop Software	Cost + Processing	7/1/1999
30076		Teleconferences	Classroom Teleconference-Public	200.00 per hour + Materials	7/1/2003
30076		Teleconferences	Classroom Teleconference-University Direct Support	Cost + Materials	7/1/2003
30076		Teleconferences	Classroom Teleconference-University Related	100.00 Cost + Materials	7/1/2003
30076		Teleconferences	Classroom: Teleconference Set-Up - Public	100.00 per session	7/1/2006
30076		Teleconferences	Meeting Room Teleconference: Public	150.00 per hour + Cost of Materials	7/1/2003
30076		Teleconferences	Meeting Room Teleconference-University Direct Support	Cost + Materials	7/1/2003
30076		Teleconferences	Meeting Room Teleconference-University Related	75.00 per hr + Cost of Materials	7/1/2003
30076		Teleconferences	Meeting Room: Teleconference Set Up - Public	50.00 per session	7/1/2006
30076		Video Production	Pre-Production - Public	55.00 per hr	7/1/2006
30076		Video Production	Pre-Production - University Related	27.50 per hr	7/1/2006
30076		Video Services	Campus Cable Distribution-University Direct Support	No charge	7/1/2003
30076		Video Services	Campus Cable Distribution-University Related	8.00 per hour	7/1/2003
30076		Video Services	Editing: 1/2 VHS-Charge-Public	15.00 per hour	7/1/2003
30076		Video Services	Editing: 1/2 VHS-Charge-University	9.50 per hour	7/1/2003
30076		Video Services	Editing: 1/2 VHS-Staff-Public	52.00 per hour	7/1/2003
30076		Video Services	Editing: 1/2 VHS-Staff-University	26.00 per hour	7/1/2003
30076		Video Services	Editing: Betacam & DV Editing-Labor-University Related	26.00 per hour	7/1/2003
30076		Video Services	Editing: Betacam & DV Editing-University Direct Support	Cost + Materials	7/1/2003
30076		Video Services	Editing: Betacam & DV-Labor-Public	52.00 per hour	7/1/2003
30076		Video Services	Editing: BetaCam-Charge-Public	23.00 per hour	7/1/2003
30076		Video Services	Editing: BetaCam-Charge-University	12.50 per hour	7/1/2003
30076		Video Services	Editing: BetaCam-Staff-Public	52.00 per hour	7/1/2003
30076		Video Services	Editing: BetaCam-Staff-University	26.00 per hour	7/1/2003

Fund	Department	Description	2006 - 07 Fee	Last Date Changed
30076	ATUS	Video Services	Editing: VHS-Labor-Public	52.00 per hour 7/1/2003
30076		Video Services	Editing: VHS-Labor-University Related	26.00 per hour 7/1/2003
30076		Video Services	Editing: VHS-University Direct Support	Cost + Materials 7/1/2003
30076		Video Services	Production: Public	52.00 per hour 7/1/2003
30076		Video Services	Production: University Direct Support	Cost + Materials 7/1/2003
30076		Video Services	Production: University Related	26.00 per hour 7/1/2003
30076		Video Services	Satellite/Off Air Recording-Public	20.00 per hour 7/1/2003
30076		Video Services	Satellite/Off Air Recording-University Direct Support	No charge 7/1/2003
30076		Video Services	Satellite/Off Air Recording-University Related	8.00 per hour 7/1/2003
30076		Video Services	Videotape Duplication-Public	16.00 per hour 7/1/2003
30076		Video Services	Videotape Duplication-University Direct Support	Cost + Materials 7/1/2003
30076		Video Services	Videotape Duplication-University Related	8.00 per hour 7/1/2003
30076		Web Services	Web Services: Labor-Public	60.00 per hour + materials 7/1/2003
30076		Web Services	Web Services: Labor-University Direct Support	Cost + Materials 7/1/2003
30076		Web Services	Web Services: Labor-University Related	30.00 per hour + materials 7/1/2003
24912	BFR	Federal Indirect Cost Recovery Rate - Circular A21	60.3%	7/1/2006
31021	Capital Fiscal Management	Capital Proj Mgt Fee	Variable set by OFM	7/1/1999
24005	Fiscal Services	Bank Card Fees	Pass Through	7/1/2000
24005		Bank Card Fees for Web Transactions	Pass Through	7/1/2000
24005		Outgoing/Incoming Wire Fee	40.00	7/1/2005
20033	Foreign Studies Course	International Opportunities Fair Registration Fee	50.00	7/1/2006
32031	Human Resources	Computer Lab Rental	45.00 per day	7/1/2003
32031		External Workshops/Seminar	Variable	7/1/1995
32031		Individual Consultation/Dedicated Class	55.00 per contract hr	7/1/2001
32031		Internal Staff Trng Wrkshps/Smnrs	50.00 per course max	7/1/2001
32040	Lockshop	Card Keys, high security	9.49 each	7/1/2006
32040		Card Keys, Update Service	5.00	7/1/2006
32040		Keys, basic	5.86 each	7/1/2006
32040		Keys, high security	9.49 each	7/1/2006
32040		Per Hour Rate	49.85 per hour	7/1/2006
30210	Motor Pool	Hybrid Sedans - daily rate	29.00	7/1/2006
30210		Hybrid Sedans - mileage rate	0.15	7/1/2006

Fund	Department	Description	2006 - 07 Fee	Last Date Changed
30210	Motor Pool	12 Passenger Van	22.80 per day	7/1/2006
30210		12 Passenger Van - mileage rates	0.51	7/1/2006
30210		15 Passenger Van	22.80 per day	7/1/2006
30210		15 Passenger Van - mileage rates	0.51	7/1/2006
30210		7 Passenger Van	22.80 per day	7/1/2006
30210		7 Passenger Van - mileage rates	0.44	7/1/2006
30210		Accidents Departmental Charge	500.00	7/1/1998
30210		Detail Charge/Vehicles returned w/smoking residue	Market Rate	7/1/2003
30210		Drivers Special Events	22.00 per hour	7/1/2001
30210		Handling Fee for Supplemental Van Rental	15.00	7/1/2004
30210		Leased Vehicle-15 & 12 Passenger Van Yearly Lease	5,500.00 yearly	7/1/2002
30210		Pick-up Compact	17.00 per day	7/1/2006
30210		Pick-up Compact - mileage rates	0.38	7/1/2006
30210		Remove/Install Van Seats	20.00	7/1/1999
30210		Sedan	17.00 per day	7/1/2006
30210		Sedan - mileage rates	0.38	7/1/2006
30210		Supplemental Van rental (State Contract-Enterprise)	Market Rate	7/1/2003
30210		Vehicle Clean Up	25.00	7/1/1998
30210		Vehicle returned late	100.00	7/1/2004
31010	Physical Plant	Facilities Engineer II	58.09 per hour	7/1/2006
31010		Level 26-Custodian I	23.50 per hour	7/1/2006
31010		Level 28- Motorized Equipment Attendant	32.43 per hour	7/1/2006
31010		Level 29-Grounds & Nursery Specialist II	33.15 per hour	7/1/2006
31010		Level 31-Window Washer	34.75 per hour	7/1/2006
31010		Level 32-Utility Worker II	35.57 per hour	7/1/2006
31010		Level 38-Motorized Equipment Mechanic	40.99 per hour	7/1/2006
31010		Level 39-Maintenance Mechanic I	42.02 per hour	7/1/2006
31010		Level 44-Heavy Equipment Operator	46.06 per hour	7/1/2006
31010		Level 45-Control Technician	48.72 per hour	7/1/2006
31010		Level 45-Electrician	48.72 per hour	7/1/2006
31010		Level 45-Insulation Worker	48.72 per hour	7/1/2006
31010		Level 45-Maintenance Mechanic II	48.72 per hour	7/1/2006

Fund	Department	Description	2006 - 07 Fee	Last Date Changed
31010	Physical Plant	Level 45-Motorized Equipment Mechanic Supervisor	48.72 per hour	7/1/2006
31010		Level 45-Plumber/Pipefitter/Steamfitter	48.72 per hour	7/1/2006
31010		Level 45-Sheet Metal Worker	48.72 per hour	7/1/2006
31010		Level 47-High Voltage Electrician	48.89 per hour	7/1/2006
31010		Level 61-Fire Protection Engineer	69.03 per hour	7/1/2006
31010		Mark ups-Expendable Materials	3.3% of Project Materials	7/1/2006
31010		Mark ups-Hazardous Waste Disposal Fee	.80% of Hazardous Waste	7/1/2006
31010		Mark ups-Purchase Orders	8.00% of Purchase Order	7/1/2002
31010		Other Fees-Over/Under	10% of Project's Base Estimate	7/1/2006
31010		Other Fees-Overtime	1.34% of Base Labor Rate	7/1/2003
31024	Planning Design & Construction Admn	Architect	51.00 per hour	7/1/2003
31024		Capital - Proj Mgt Fee	Variable set by OFM	7/1/1999
31024		City of Bellingham permits & plan review	3% of est construction costs	7/1/2005
31024		Design Fee	13.75%	7/1/2004
31024		Planning Project Manager	57.00 per hour	7/1/1999
31024		Planning Support Staff	44.00 per hour	7/1/1999
30610	Plant Services/Construction	Equipment Rental Asphalt Roller	22.00 per hour	7/1/2002
30610		Equipment Rental Backhoe	44.00 per hour	7/1/2002
30610		Equipment Rental Bldg Svc Carpet Restoration Equip	18.00 per hour	7/1/1999
30610		Equipment Rental Bldg Svc Equipment Usage	5.00 per hour	7/1/1999
30610		Equipment Rental Compactor	9.00 per hour	7/1/2002
30610		Equipment Rental Compressor	17.00 per hour	7/1/2002
30610		Equipment Rental Concrete Saw	17.00 per hour	7/1/2002
30610		Equipment Rental Crawler	33.00 per hour	7/1/2002
30610		Equipment Rental Ditch Witch	22.00 per hour	7/1/2002
30610		Equipment Rental Excavator	28.00 per hour	7/1/2003
30610		Equipment Rental Fleet Maint Engine Analyzer	15.00 per hour	7/1/1999
30610		Equipment Rental Forklift	33.00 per hour	7/1/2002
30610		Equipment Rental Grader	35.00 per hour	7/1/2002
30610		Equipment Rental Lift Man-Lift Genie	33.00 per hour	7/1/2002
30610		Equipment Rental Manlift-Genie rent 10389E	33.00 per hour	7/1/2002
30610		Equipment Rental Roller	22.00 per hour	7/1/2002

Fund	Department	Description	2006 - 07 Fee	Last Date Changed
30610	Plant Services/Construction	Equipment Rental	Sewer Jet	39.00 per hour 7/1/2002
30610		Equipment Rental	Small Motorized Grounds Equip	7.00 per hour 7/1/2002
30610		Equipment Rental	Sweeper	33.00 per hour 7/1/2002
30610		Equipment Rental	Tech Maint Vacuum Pump	18.00 per hour 7/1/1999
30610		Equipment Rental	Technical Maint Balancing Equip	135.00 per hour 7/1/1999
30610		Equipment Rental	Technical Maint Fiber Optic Test Equip	35.00 per hour 7/1/1999
30610		Equipment Rental	Tractor, Loader	22.00 per hour 7/1/2002
30610		Equipment Rental	Truck, Boom	55.00 per hour 7/1/2002
30610		Equipment Rental	Truck, Dump	28.00 per hour 7/1/2002
30610		Equipment Rental	Truck, Educator	33.00 per hour 7/1/2002
30610		Equipment Rental	Truck, Flatbed	24.00 per hour 7/1/2002
30610		Other	P/C Computer Programming	45.00 per hour 7/1/1999
30610		Other	PP P/C, Printer, Werv Rep Cost Per P/C Stn	650.00 7/1/2001
30610		Vehicle Rental (Annual)	Cargo Van (full size)	2,750.00 per year 7/1/2001
30610		Vehicle Rental (Annual)	Cargo Van (mini)	2,750.00 per year 7/1/2001
30610		Vehicle Rental (Annual)	Cube Van	3,600.00 per year 7/1/2002
30610		Vehicle Rental (Annual)	Flat Bed	3,500.00 per year 7/1/2002
30610		Vehicle Rental (Annual)	Pick-up 1/2 & 3/4 Ton	2,750.00 per year 7/1/2001
30610		Vehicle Rental (Annual)	Pick-up Compact	2,750.00 per year 7/1/1999
30610		Vehicle Rental (Annual)	Pick-up Compacts Police Cars	8,200.00 per year 7/1/2002
31040	Public Safety		Fingerprint Cards - 1st card	10.00 7/1/2005
31040			Fingerprint Cards - Subq Card Req	10.00 7/1/2005
31040			Live Scan Fingerprint Records Check: Persons w/ access to children or developmentally disabled persons	WSP fee + \$10.00 7/1/2006
31040			Live Scan Fingerprint Records Check: Teacher Certification	WSP fee + \$10.00 7/1/2006
31040			Live Scan Fingerprint Records Check: WWU Pre-Employment	WSP fee + \$10.00 7/1/2006
31040			Off-Duty Police Officer Services	51.71 per hour 7/1/2006
31040			Student Public Safety Assist	10.51 per hour 7/1/2006
30110	Publishing Services	Convenience Copier Program	Convenience copier coin-op	0.10 7/1/1997
30110		Convenience Copier Program	Convenience Departmental copier (exc paper)	0.05 7/1/2003
30110		Convenience Copier Program	Convenience Departmental copier (inc paper)	0.06 7/1/2003
30110		Convenience Copier Program	Convenience Departmental copier (option 3)	monthly + .042 7/1/2001
30110		Convenience Copier Program	Copy/ALL card (excluding card price)	0.06 7/1/2003

Fund	Department	Description	2006 - 07 Fee	Last Date Changed	
30110	Publishing Services	Convenience Copier Program	Copyright Authorization Office (Royalty Fees)	Variable	7/1/2002
30110		Copy Services	Bindery production	45.50 per hour	7/1/2002
30110		Copy Services	Collating charge	0.01 per sheet	7/1/2002
30110		Copy Services	Color copy, 8.5 X 11	1.00	7/1/1994
30110		Copy Services	Copy Services-Material Mark-Up	15%	7/1/2002
30110		Copy Services	Duplicating B/W per impression, copy charge only	0.04	7/1/2003
30110		Copy Services	Faxing: Inside Washington, 1st page	1.00	7/1/1997
30110		Copy Services	Faxing: International 1st page	2.00	7/1/1999
30110		Copy Services	Faxing: Outside Washington 1st page	1.50	7/1/1997
30110		Copy Services	Markup outside contracts	5%	7/1/1997
30110		Printing Services	Markup outside contracts	5%	7/1/1996
30110		Printing Services	Material markup	15%	7/1/2002
30110		Printing Services	Photo Library: Black & White	25.00 per photo	7/1/1997
30110		Printing Services	Photo Library: Color	100.00 per photo	7/1/1997
30110		Printing Services	Photo Library: Image for Web Use	10.00 per image	7/1/2002
30110		Printing Services	Printing bindery production	54.25 per hour	7/1/2005
30110		Printing Services	Printing Production	54.25 per hour	7/1/2005
30120	Publishing Services Equip Reserve		Equip Replacement Markup / per job cost	9%	7/1/2002
30079	Technical Services		Server and Operating System Support	59.00 per hr	7/1/2003
30500	Telecommunications	Basic Instruments & Upgrades	A2 Analog Teleph. Instr. w/ keys (K) - Non-Self Sustaining	Net diff.+10%*	7/1/2002
30500		Basic Instruments & Upgrades	A3 Anal. Teleph. Instr. w/ keys (K) and speaker (S) - Non-Self Sustaining	Net diff.+10%*	7/1/2002
30500		Basic Instruments & Upgrades	A4 Anal. Teleph. Instr. w/ keys (K), speaker (S), and Caller ID - Non-Self Sustaining	Net diff.+10%*	7/1/2002
30500		Basic Instruments & Upgrades	A5 Anal. Teleph. Instr. w/ keys (K), speaker (S) & 2 Lines - Non-Self Sustaining	Net diff.+10%*	7/1/2002
30500		Basic Instruments & Upgrades	Cellular Telephone Equipment - Non-Self Sustaining	Cost + 10%	7/1/2002
30500		Basic Instruments & Upgrades	Cellular Telephone Equipment - Self Sustaining	Cost + 10%	7/1/2002
30500		Basic Instruments & Upgrades	D1 Basic Digital Telephone Instr w/ prog. keys (K) d- Non-Self Sustaining	Net diff.+10%*	7/1/2002
30500		Basic Instruments & Upgrades	D2 Digital Teleph. Instr. w/ keys (K) and speaker (S) - Non-Self Sustaining	Net diff.+10%*	7/1/2002
30500		Basic Instruments & Upgrades	D3 Dig. Teleph. Instr. w/ keys (K), and Caller ID - Non-Self Sustaining	Net diff.+10%*	7/1/2002
30500		Basic Instruments & Upgrades	D4 Dig. Teleph. Instr. w/ keys (K), speaker (S), and Caller ID - Non-Self Sustaining	Net diff.+10%*	7/1/2002
30500		Basic Instruments & Upgrades	D5 Dig. Teleph. Instr. w/ (2) keys (2K) and speaker (S) - Non-Self Sustaining	Net diff.+10%*	7/1/2002
30500		Basic Instruments & Upgrades	D6 Dig. Teleph. Instr. w/(2) keys (2K), speaker (S), and Caller ID - Non-Self Sustaining	Net diff.+10%*	7/1/2002
30500		Basic Instruments & Upgrades	D7 2 key units add-on only, for digital Telephone Instr. - Non-Self Sustaining	Net diff.+10%*	7/1/2002

Fund	Department	Description	2006 - 07 Fee	Last Date Changed	
30500	Telecommunications	Basic Instruments & Upgrades	P3 Pager, Alpha-numeric, two way - Non-Self Sustaining	Cost + 10%	7/1/2002
30500		Basic Instruments & Upgrades	P3 Pager, Alpha-numeric, two way - Self Sustaining	Cost + 10%	7/1/2002
30500		Basic Instruments & Upgrades	Tel., Misc. Equip.: Chimes, ampl. handset, soft ext., etc. - Non-Self Sustaining	Net diff.+10%*	7/1/2002
30500		Installation Rates	Data Technician/Designer - Non-Self Sustaining	42.00 per hour	7/1/2002
30500		Installation Rates	Data Technician/Designer - Residence Halls	42.00 per hour	7/1/2002
30500		Installation Rates	Data Technician/Designer - Self Sustaining	42.00 per hour	7/1/2002
30500		Installation Rates	New CATV Outlet Activation - Non-Self Sustaining	39.00	7/1/2003
30500		Installation Rates	New CATV Outlet Activation - Self Sustaining	39.00	7/1/2003
30500		Installation Rates	New Data or Phone Line Installation or Move Interbuilding - Non-Self Sustaining	100.00	7/1/2002
30500		Installation Rates	New Data or Phone Line Installation or Move Interbuilding - Self Sustaining	100.00	7/1/2002
30500		Installation Rates	New Data or Phone Line Move Intrabuilding & Software Chg. - Non-Self Sustaining	39.00	7/1/2002
30500		Installation Rates	New Data or Phone Line Move Intrabuilding & Software Chg. - Self Sustaining	39.00	7/1/2002
30500		Installation Rates	Software Feature Changes - Non-Self Sustaining	20.00	7/1/2002
30500		Installation Rates	Software Feature Changes - Residence Halls	20.00	7/1/2002
30500		Installation Rates	Software Feature Changes - Self Sustaining	20.00	7/1/2002
30500		Installation Rates	Telecom Analyst - Non-Self Sustaining	40.00 per hour	7/1/2002
30500		Installation Rates	Telecom Analyst - Residence Halls	40.00 per hour	7/1/2002
30500		Installation Rates	Telecom Analyst - Self Sustaining	40.00 per hour	7/1/2002
30500		Installation Rates	Telecom Technician (first hour at \$80) - Non-Self Sustaining	40.00 per hour	7/1/2002
30500		Installation Rates	Telecom Technician (first hour at \$80) - Residence Halls	40.00 per hour	7/1/2002
30500		Installation Rates	Telecom Technician (first hour at \$80) - Self Sustaining	40.00 per hour	7/1/2002
30500		Long Distance Rates	British Columbia Daytime Rates	0.71 per minute	7/1/2002
30500		Long Distance Rates	Directory Assistance	1.10 per minute	7/1/2002
30500		Long Distance Rates	Eastern Washington Daytime Rates	0.31 per minute	7/1/2002
30500		Long Distance Rates	Intercontinental	Variable	7/1/2002
30500		Long Distance Rates	Out of State Daytime Rates	0.33 per minute	7/1/2002
30500		Long Distance Rates	Western Washington Daytime Rates	0.16 per minute	7/1/2002
30500		Recurring Monthly Charges	A1 Basic Services, with A1 basic Instrument - Self Sustaining	20.00	7/1/2002
30500		Recurring Monthly Charges	A2 Analog Teleph. Instr. w/ keys (K) - Self Sustaining	24.00	7/1/2002
30500		Recurring Monthly Charges	A3 Anal. Teleph. Instr. w/ keys (K) and speaker (S) - Self Sustaining	29.00	7/1/2002
30500		Recurring Monthly Charges	A4 Anal. Teleph. Instr. w/ keys (K), speaker (S), and Caller ID Non-Self Sustaining	32.00	7/1/2002
30500		Recurring Monthly Charges	A5 Anal. Teleph. Instr. w/ keys (K), speaker (S) & 2 Lines - Self Sustaining	53.00	7/1/2002

Fund	Department	Description	2006 - 07 Fee	Last Date Changed
30500	Telecommunications	Recurring Monthly Charges Basic Telephone Service, no phone (for fax or modem) - Self Sustaining	18.00	7/1/2002
30500		Recurring Monthly Charges Cellular Telephone Air-time Charges	Cost+5%	7/1/2006
30500		Recurring Monthly Charges D1 Basic Digital Telephone Instr w/ Prog. Keys (K) - Self Sustaining	41.00	7/1/2002
30500		Recurring Monthly Charges D2 Digital Teleph. Instr. w/ keys (K) and speaker (S) - Self Sustaining	47.00	7/1/2002
30500		Recurring Monthly Charges D3 Dig. Teleph. Instr. w/ keys (K), and Caller ID - Self Sustaining	51.00	7/1/2002
30500		Recurring Monthly Charges D4 Dig. Teleph. Instr. w/ keys (K), speaker (S), and Caller ID - Self Sustaining	54.00	7/1/2002
30500		Recurring Monthly Charges D5 Dig. Teleph. Instr. w/ (2) keys (2K) and speaker (S) - Self Sustaining	55.00	7/1/2002
30500		Recurring Monthly Charges D6 Dig. Teleph. Instr. w/(2) keys (2K), speaker (S), and Caller ID - Self Sustaining	58.00	7/1/2002
30500		Recurring Monthly Charges D7 2 key units add-on only, for digital Telephone Instr. - Self Sustaining	7.00	7/1/2002
30500		Recurring Monthly Charges OPX-Off Premise Extension (Incl. Basic Instr.) - Non-Self Sustaining	Cost + 5%	7/1/2002
30500		Recurring Monthly Charges OPX-Off Premise Extension (Incl. Basic Instr.) - Self Sustaining	Cost + 5%	7/1/2002
30500		Recurring Monthly Charges P1 Pager, Numerical - Non-Self Sustaining	10.00	7/1/2002
30500		Recurring Monthly Charges P1 Pager, Numerical - Self Sustaining	10.00	7/1/2002
30500		Recurring Monthly Charges P2 Pager, Alpha-numeric - Non-Self Sustaining	18.00	7/1/2002
30500		Recurring Monthly Charges P2 Pager, Alpha-numeric - Self Sustaining	18.00	7/1/2002
30500		Recurring Monthly Charges P3 Pager, Alpha-numeric, two way - Non-Self Sustaining	26.00	7/1/2002
30500		Recurring Monthly Charges P3 Pager, Alpha-numeric, two way - Self Sustaining	26.00	7/1/2002
30500		Recurring Monthly Charges Res Halls-Recurring Monthly Charges-Basic Telephone Service, no phone (for fax or modem)	13.75	7/1/2002
30500		Recurring Monthly Charges Tel., Misc. Equip.: Chimes, ampl. handset, soft ext., etc. - Self Sustaining	3.00	7/1/2002
30500		Recurring Monthly Charges Voice Mail Options-Fax Feature (needs Desktop Installed, Chg. For Soft Ext.) - Self Sustaining	3.00	7/1/2002
30500		Voice Mail Options Desk Top Messaging - Non-Self Sustaining	License Fee	7/1/2002
30500		Voice Mail Options Desk Top Messaging - Self Sustaining	License Fee	7/1/2002
30500		Voice Mail Options Fax Feature (needs Desktop Installed) - Non-Self Sustaining	License Fee	7/1/2002
30500		Voice Mail Options Fax Feature (needs Desktop Installed) - Self Sustaining	License Fee	7/1/2002
30500		Voice Mail Options Speech Recognition - Non-Self Sustaining	License Fee	7/1/2002
30500		Voice Mail Options Speech Recognition - Self Sustaining	License Fee	7/1/2002
30500		Voice Mail Options Voice Mail - Residence Halls	4.00	7/1/2002
30500		Voice Mail Options Voice Mail Trees (Software Chg.) - Non-Self Sustaining	20.00	7/1/2002
30500		Voice Mail Options Voice Mail Trees (Software Chg.) - Residence Halls	20.00	7/1/2002
30500		Voice Mail Options Voice Mail Trees (Software Chg.) - Self Sustaining	20.00	7/1/2002
30360	Transport Services	Each additional person	24.00 per hour	7/1/2006
30360		Truck or Forklift w/ Operator	29.00 per hour	7/1/2006

Fund	Department	Description	2006 - 07 Fee	Last Date Changed
32010	Vehicle Insurance	1st \$500 of Accident Charges to using Dept	500.00	7/1/1998